
Certificate of Analysis

Product: Goat anti-Rabbit IgG Fc, Affinity Pure

Part Number: GtxRb-004-E
Lot Number: 27-102-032213
Concentration: 9.40 mg/ml ($E^{1\%}$ at 280 nm = 13.0)
Amount: 2.0 mg
Form: Clear, colorless liquid, 0.2 μ m filtered
Purification: Affinity purified using solid phase Rabbit IgG
Purity: $\geq 95\%$ based on SDS-PAGE
Host: Goat
Immunogen: Purified Rabbit IgG, Fc fragment
Buffer: 10 mM Sodium Phosphate, 0.15 M Sodium Chloride, pH 7.2
Preservative: 0.05 % (w/v) Sodium Azide
Storage: 2-8 $^{\circ}$ C
Expiration Date: October 22, 2021

Specificity: Based on IEP, this antibody reacts with:

- heavy (γ) chains on Rabbit IgG

Cross Reactivity: Based on IEP, no reactivity is observed to:

- light chains on all Rabbit immunoglobulins
- non-immunoglobulin Rabbit serum proteins
- Rabbit IgG F(ab)'2 fragment
- serum proteins from Bovine, Horse, or Human

Country of Origin: Goat serum was obtained from healthy animals of US origin and under the care of a registered veterinarian.

Applications: Suitable for use in: ELISA, WB, IHC, ICC, CL, FACS, IM, IF
The optimal working dilution should be determined by the investigator.

Disclaimer: *For in vitro Laboratory Use Only.* Not for diagnostic or therapeutic use. Not for Human or animal consumption. The proper selection and use of our products is the sole responsibility of the end user, and therefore we can offer no guarantee to a specific experimental outcome. Suggested applications of our products are not recommendations to use our products in violation of any patent or as a license under any patent of ImmunoReagents, Inc.

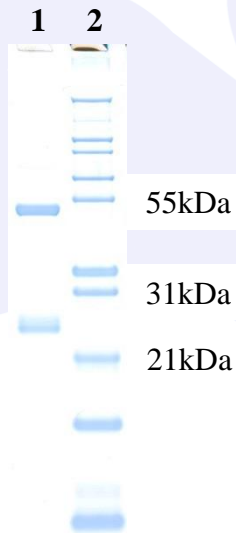
Product may not be resold or modified for resale without prior written approval of ImmunoReagents, Inc.

Testing Results

PRODUCT: Goat anti-Rabbit IgG Fc, Affinity Pure
PART NUMBER: GtxRb-004-E
LOT NUMBER: 27-102-032213

<u>TESTS</u>	<u>SPECIFICATIONS</u>	<u>RESULTS</u>
Appearance:	Clear, colorless liquid	PASS
Purity:	Two predominant bands at 50 and 24 kDa based on SDS-PAGE	PASS
Specificity:	Based on IEP, this antibody has precipitin bands with: <ul style="list-style-type: none">heavy (γ) chains on Rabbit IgG	PASS
Cross Reactivity:	Based on IEP, no precipitin bands are observed to: <ul style="list-style-type: none">light chains on all Rabbit immunoglobulinsnon-immunoglobulin Rabbit serum proteinsRabbit IgG F(ab)'2 fragmentserum proteins from Bovine, Horse or Human	PASS PASS PASS PASS

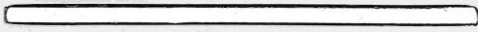
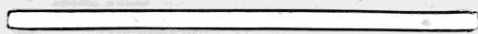
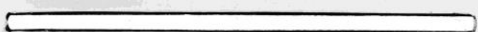

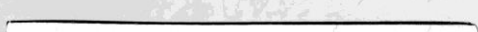
SDS-PAGE



- 1) GtxRb-004-D, Lot # 27-102-032213
2) Mol Weight Standard

Immunoelectrophoresis (IEP)

Part#: GtxRb-004-E Lot#: 27-102-032213 QCF#: 3100

<input type="radio"/>	Normal Rabbit Serum
	
<input type="radio"/>	Purified Rabbit IgG
	
<input type="radio"/>	Rabbit IgG F(ab)'2 Fragment
	
<input type="radio"/>	Normal Bovine Serum
	
<input type="radio"/>	Normal Horse Serum
	
<input type="radio"/>	Normal Human Serum

Date: October 22, 2019

Signature:  Quality Control