
Certificate of Analysis

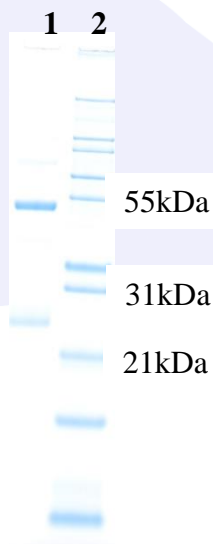
Product:	Goat anti-Human Kappa (κ) Light Chain, Affinity Pure
Part Number:	GtxHu-084-E
Lot Number:	27-154-102213
Concentration:	9.83 mg/ml ($E^{1\%}$ at 280 nm = 13.0)
Amount:	1.0 mg
Form:	Clear, colorless liquid, 0.2 μ m filtered
Purification:	Affinity purified using solid phase Human Kappa (κ) Light Chain
Purity:	≥ 95 % based on SDS-PAGE
Host:	Goat
Immunogen:	Purified Human Kappa (κ) Light Chain
Buffer:	10 mM Sodium Phosphate, 0.15 M Sodium Chloride, pH 7.2
Preservative:	0.05 % (w/v) Sodium Azide
Storage:	2-8 $^{\circ}$ C
Expiration Date:	August 8, 2021
Specificity:	Based on IEP, this antibody reacts with: <ul style="list-style-type: none">• kappa (κ) light chains on all Human immunoglobulins
Cross Reactivity:	Based on IEP, no reactivity is observed to: <ul style="list-style-type: none">• non-immunoglobulin Human serum proteins• heavy chains on all Human immunoglobulins• lambda (λ) light chains on all Human immunoglobulins• Mouse serum proteins
Country of Origin:	Goat serum was obtained from healthy animals of US origin and under the care of a registered veterinarian.
Applications:	The optimal working dilution should be determined by the investigator. Suitable for use in: ELISA, IP, IDA, WB, IHC, Absorption.
Disclaimer:	<i>For in vitro Laboratory Use Only.</i> Not for diagnostic or therapeutic use. Not for human or animal consumption. The proper selection and use of our products is the sole responsibility of the end user, and therefore we can offer no guarantee to a specific experimental outcome. Suggested applications of our products are not recommendations to use our products in violation of any patent or as a license under any patent of ImmunoReagents, Inc.

Product may not be resold or modified for resale without prior written approval of ImmunoReagents, Inc.

Testing Results

PRODUCT: Goat anti-Human Kappa (κ) Light Chain, Affinity Pure
PART NUMBER: GtxHu-084-E
LOT NUMBER: 27-154-102213

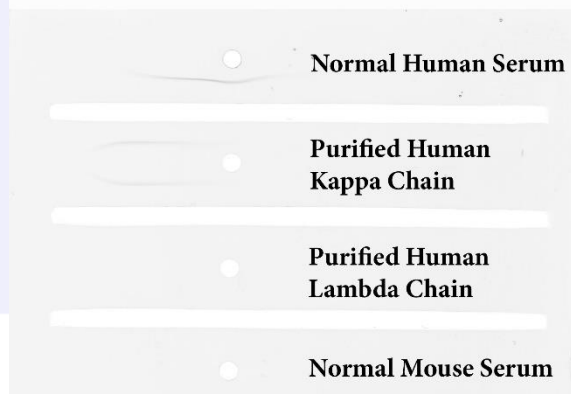
<u>TESTS</u>	<u>SPECIFICATIONS</u>	<u>RESULTS</u>
Appearance:	Clear, colorless liquid	PASS
Purity:	Two predominant bands at 50 and 24 kDa based on SDS-PAGE	PASS
Specificity:	Based on IEP, this antibody has precipitin bands with: <ul style="list-style-type: none">kappa (κ) light chains on all Human immunoglobulins	PASS
Cross Reactivity:	Based on IEP, this antibody does not have precipitin bands to: <ul style="list-style-type: none">non-immunoglobulin Human serum proteinsheavy chains on all Human immunoglobulinslambda (λ) light chains on all Human immunoglobulinsMouse serum proteins	PASS PASS PASS PASS

SDS-PAGE**Immunoelectrophoresis (IEP)**

QCF # 3084

Part # GtxHu-084-E

Lot # 27-154-102213



- 1) GtxHu-084-E, Lot # 27-154-102213
- 2) Mol Weight Standard

Date: August 9, 2019

Signature: _____


Quality Control

