
Certificate of Analysis

Product:	Goat anti-Human IgE (ϵ chain), DyLight® 680 conjugate
Part Number:	GtxHu-002-D680NHSX
Lot Number:	75-44-010720
Amount:	1.0 mg of antibody lyophilized ($E^{1\%}$ at 280 nm = 13.0) Product has been overfilled to ensure maximum recovery)
Fluorophore:	DyLight® 680 NHS Ester (Ex = 680 nm; Em = 715 nm)
Fluor/Protein Ratio:	3.1 Moles DyLight® 680 per Mole Antibody
Purification:	Antibody was affinity purified using solid phase Human IgE
Purity:	Affinity purified antibody is $\geq 95\%$ based on SDS-PAGE
Host:	Goat
Immunogen:	Purified Human IgE, (ϵ) chain
Buffer:	10 mM Sodium Phosphate, 0.15 M Sodium Chloride, pH 7.2, 1 % (w/v) BSA, Protease/IgG free
Preservative:	0.05 % (w/v) Sodium Azide
Reconstitution:	Rehydrate with 1.1 ml of deionized water. Allow reconstituted product to stand for at least 30 minutes at room temperature prior to dilution. If necessary, centrifuge to remove any particulates. Prepare fresh working dilution daily.
Storage:	Store lyophilized powder at 2-8 °C.
Shelf Life:	Product is stable for up to 4 weeks at 2-8°C after rehydration. For extended storage after rehydration, add an equal volume of glycerol and store at -20°C.
Specificity:	Based on IEP, this antibody reacts with: <ul style="list-style-type: none">• heavy (ϵ) chains on human IgE
Cross Reactivity:	Based on IEP, no reactivity is observed to: <ul style="list-style-type: none">• light chains on all human immunoglobulins• non-immunoglobulin human serum proteins
Country of Origin:	Goat antiserum was obtained from healthy animals of US origin and under the care of a registered veterinarian.
Note:	This conjugate prepared using Part # GtxHu-002-D, lot # 68-165-111519.
Applications:	This conjugate is suitable for immunomicroscopy and flow cytometry. The optimal working dilution should be determined by the investigator. Suggested starting dilution(s): <ul style="list-style-type: none">• 1:20 – 1:2,000 for most applications
Disclaimer:	<i>For in vitro Laboratory Use Only.</i> Not for diagnostic or therapeutic use. Not for human or animal consumption. Suggested applications of our products are not recommendations to use our products in violation of any patent or as a license under any patent of ImmunoReagents, Inc.

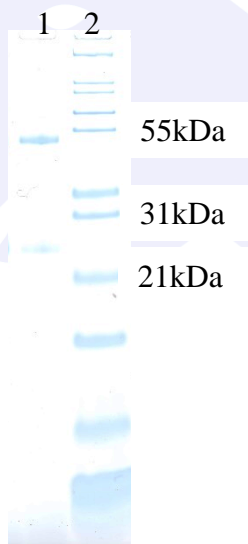
Product may not be resold or modified for resale without prior written approval of ImmunoReagents, Inc.

Testing Results

PRODUCT: Goat anti-Human IgE (ε-chain), DyLight® 680 conjugate
PART NUMBER: GtxHu-002-D680NHSX
LOT NUMBER: 75-44-010720

<u>TESTS</u>	<u>SPECIFICATIONS</u>	<u>RESULTS</u>
Appearance:	Blue fluorescent powder	PASS
Purity:	Two predominant bands at 50 and 24 kDa based on SDS PAGE	PASS
Specificity:	Based on IEP, this antibody has precipitin bands with: <ul style="list-style-type: none"> • heavy (ε) chains on human IgE 	PASS
Cross Reactivity:	Based on IEP, no precipitin bands are observed to: <ul style="list-style-type: none"> • light chains on all human immunoglobulins • non-immunoglobulin human serum proteins 	PASS PASS
FLISA:	Mean fluorescent value of 8μg/ml of DyLight® conjugate when tested against Human IgE coated at 4μg/ml.	709 MFI's
F.I.T.:	Mean fluorescent intensity of a 1:1000 dilution at Ex-682 nm (+/-9) / Em-712 nm (+/-9)	1363 MFI's

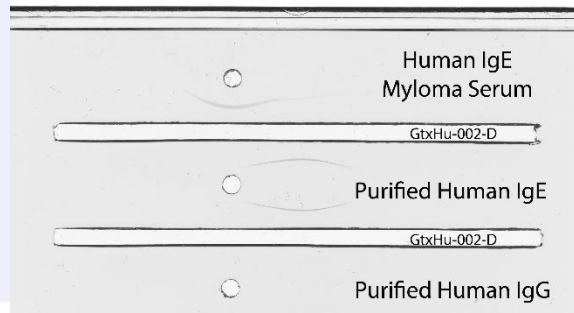
SDS PAGE



- 1) GtxHu-002-D, Lot # 68-165-111519
- 2) Mol Weight Standard

Immunoelectrophoresis (IEP)

IEP For Goat anti-Human IgE (ε-chain), Affinity Pure
 Part #: GtxHu-002-D Lot #: 68-165-111519



Date: January 27, 2020

Signature: _____
 Quality Control

