
Certificate of Analysis

Product: Goat anti-Llama IgG (H&L), DyLight® 488 Conjugate

Part Number: GtxLI-003-D488NHSX

Lot Number: 68-73-041019

Amount: 1.0 mg of antibody lyophilized ($E^{1\%}$ at 280 nm = 13.0)

Fluorophore: DyLight® 488 Ex = 493 nm; Em = 518 nm

Fluor/Protein Ratio: 5.0 Moles DyLight® 488 per Mole Antibody

Purification: Antibody was affinity purified using solid phase Llama IgG

Purity: Affinity purified antibody is $\geq 95\%$ based on SDS-PAGE

Host: Goat

Immunogen: Purified Llama IgG, whole molecule

Buffer: 10 mM Sodium Phosphate, 0.15 M Sodium Chloride, pH 7.2,
1 % (w/v) BSA, Protease/IgG free

Preservative: 0.05 % (w/v) Sodium Azide

Reconstitution: Rehydrate with 1.1 ml of deionized water. Allow reconstituted product to stand for at least 30 minutes at room temperature prior to dilution. If necessary, centrifuge to remove any particulates. Prepare fresh working dilution daily.

Storage: Store freeze dried powder at 2-8 °C.

Shelf Life: Product is stable for up to 4 weeks at 2-8 °C after rehydration. For extended storage after rehydration, add an equal volume of glycerol and store at -20 °C.

Specificity: Based on IEP, this antibody reacts with:

- heavy (γ) chains on Llama IgG
- light chains on all Llama immunoglobulins

Cross Reactivity: Based on IEP, no reactivity is observed to:

- non-immunoglobulin Llama serum proteins

Country of Origin: Goat serum was obtained from healthy animals of US origin and under the care of a registered veterinarian.

Note: Conjugate was prepared using Part # GtxLI-003-D, lot # 41-19-060614.

Applications: This conjugate is suitable for use in: FLISA, WB, IF, IM, FACS
The optimal working dilution should be determined by the investigator.
Suggested starting dilution(s):

- 1:20 – 1:2,000 for most applications

Disclaimer: *For in vitro Laboratory Use Only.* Not for diagnostic or therapeutic use. Not for Human or animal consumption. The proper selection and use of our products is the sole responsibility of the end user, and therefore we can offer no guarantee to a specific experimental outcome. Suggested applications of our products are not recommendations to use our products in violation of any patent or as a license under any patent of ImmunoReagents, Inc.

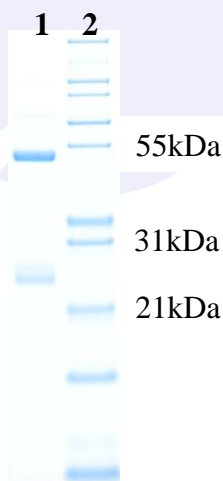
Product may not be resold or modified for resale without prior written approval of ImmunoReagents, Inc.

Testing Results

PRODUCT: Goat anti-Llama IgG (H&L), DyLight® 488 Conjugate
PART NUMBER: GtxLI-003-D488NHSX
LOT NUMBER: 68-73-041019

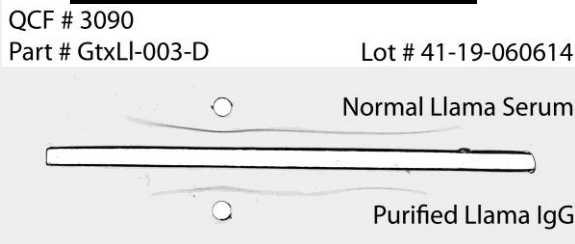
<u>TESTS</u>	<u>SPECIFICATIONS</u>	<u>RESULTS</u>
Appearance:	Yellowish powder	PASS
Purity:	Two predominant bands at 50 and 24 kDa based on SDS PAGE	PASS
Specificity:	Based on IEP, this antibody has precipitin bands against: <ul style="list-style-type: none">heavy (γ) chains on Llama IgGlight chains on all Llama immunoglobulins	PASS PASS
Cross Reactivity:	Based on IEP, no bands are observed to: <ul style="list-style-type: none">non-immunoglobulin Llama serum proteins	PASS
FLISA:	Mean fluorescent value of 8 $\mu\text{g/ml}$ of DyLight® 488 conjugate when tested against Llama IgG coated at 4 $\mu\text{g/ml}$.	1978 MFI's
FIT:	Mean fluorescent intensity of a 1:1000 dilution at Ex-488 nm (+/-9) / Em-518 nm (+/-9)	6021 MFI's

SDS PAGE



- 1) GtxLI-003-D, Lot # 41-19-060614
- 2) Mol Weight Standard

Immunoelectrophoresis (IEP)



Date: April 22, 2019

Signature: _____


Quality Control