
Certificate of Analysis

Product: Goat anti-Human Kappa (κ) Light Chain, Affinity Pure

Part Number: GtxHu-084-E

Lot Number: 20-139-101016

Concentration: 11.0 mg/ml ($E^{1\%}$ at 280 nm = 14.0)

Amount: 1.0 mg

Form: Clear, colorless liquid, 0.2 μ m filtered

Purification: Affinity purified using solid phase Human Kappa Chain

Purity: $\geq 95\%$ based on SDS-PAGE

Host: Goat

Immunogen: Purified Human Kappa (κ) Light Chains

Buffer: 10 mM Sodium Phosphate, 0.15 M Sodium Chloride, pH 7.2

Preservative: 0.05 % (w/v) Sodium Azide

Storage: 2-8 °C

Expiration Date: August 8, 2021

Specificity: Based on IEP, this antibody reacts with:

- kappa (κ) light chains on Human Immunoglobulins

Cross Reactivity: Based on IEP, no reactivity is observed to:

- lambda (λ) light chains on Human IgG
- non-immunoglobulin Human serum proteins
- Mouse serum proteins

Country of Origin: Goat serum was obtained from healthy animals of US origin and under the care of a registered veterinarian.

Applications: Suitable for use in: ELISA, WB, IHC, ICC, CL, FACS, IM, IF
The optimal working dilution should be determined by the investigator.

Disclaimer: *For in vitro Laboratory Use Only.* Not for diagnostic or therapeutic use. Not for Human or animal consumption. The proper selection and use of our products is the sole responsibility of the end user, and therefore we can offer no guarantee to a specific experimental outcome. Suggested applications of our products are not recommendations to use our products in violation of any patent or as a license under any patent of ImmunoReagents, Inc.

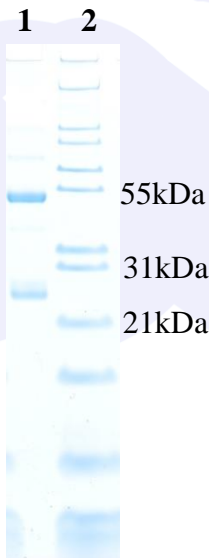
Product may not be resold or modified for resale without prior written approval of ImmunoReagents, Inc.

Testing Results

PRODUCT: Goat anti-Human Kappa (κ) Light Chain, Affinity Pure
PART NUMBER: GtxHu-084-E
LOT NUMBER: 20-139-101016

<u>TEST</u>	<u>SPECIFICATIONS</u>	<u>RESULTS</u>
Appearance:	Clear and Colorless	PASS
Purity:	Two predominant bands at 50 and 24 kDa based on SDS PAGE	PASS
Specificity:	Based on IEP, this antibody has precipitin bands with: <ul style="list-style-type: none">kappa (κ) light chains on Human IgG	PASS
Cross Reactivity:	Based on IEP, this antibody does not have precipitin bands to: <ul style="list-style-type: none">lambda (λ) light chains on Human IgGnon-immunoglobulin Human serum proteinsmouse serum proteins	PASS PASS PASS

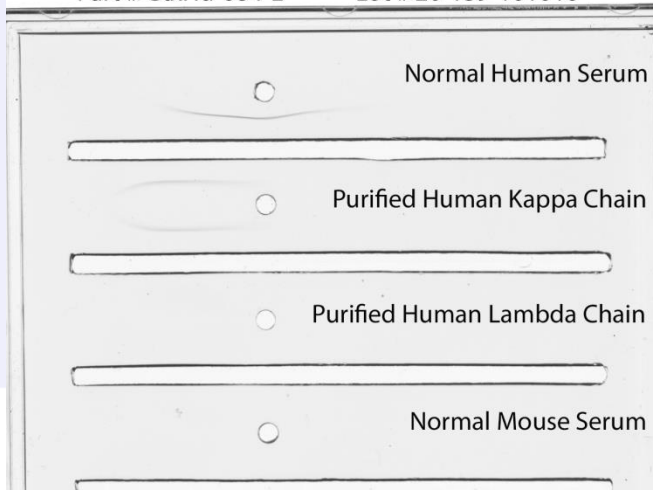
SDS PAGE



- 1) GtxHu-084-E, Lot # 20-139-101016
2) Mol Weight Standard

Immunoelectrophoresis (IEP)

IEP Image for Goat anti-Human Kappa Chain, Affinity Pure
Part # GtxHu-084-E Lot # 20-139-101016



Date: August 9, 2019

Signature: _____

Quality Control