
Certificate of Analysis

Product: Chicken anti-Rabbit IgG (H&L), HRP Conjugate

Part Number: CkxRb-003-DHRPX
Lot Number: 81-87-060221
Amount: 1.0 mg of lyophilized antibody at 1.0 mg/ml ($E^{1\%}$ at 280 nm = 13.2)
(Product has been overfilled to ensure maximum recovery)

Label: Horseradish Peroxidase (HRP)
Form: Lyophilized
Purification: Affinity purified using solid phase Rabbit IgG
Purity: $\geq 95\%$ based on SDS-PAGE
Host: Chicken
Immunogen: Purified Rabbit IgG, whole molecule
Buffer: 10 mM Sodium Phosphate, 0.15 M Sodium Chloride, pH 7.2,
1 % (w/v) BSA, Protease/IgG free
Preservative: 0.1 % (v/v) ProClin 150 – *Use of Sodium Azide will inhibit enzyme activity of horseradish peroxidase*

Reconstitution: Rehydrate with 1.1 ml of deionized water. Allow reconstituted product to stand at least 30 minutes at room temperature prior to dilution. If necessary, centrifuge to remove any particulates. Prepare fresh working dilution daily.

Storage: Store lyophilized material at 2-8 °C. For storage at -20 °C after reconstitution, dilute with an equal volume of glycerol to prevent loss of enzymatic activity. Prepare working dilution prior to use and then discard.

Shelf Life: Lyophilized product is stable 1 year from date of receipt.

Specificity: Based on IEP, this antibody reacts with:

- heavy (γ) chains on Rabbit IgG
- light chains on all Rabbit immunoglobulins

Cross Reactivity: Based on IEP, no reactivity is observed to:

- non-immunoglobulin Rabbit serum proteins

Country of Origin: Chicken Ig Fraction was prepared using eggs from hens of US origin and under the care of a registered veterinarian.

Note: This conjugate was prepared using Part # CkxRb-003-D, Lot # 35-67-012915

Applications: This conjugate is suitable for all immunoassay applications. The optimal working dilution should be determined by the investigator. Suggested starting dilution(s):

- 1:500-1:5,000 for Immunohistochemistry
- 1:200-1:5,000 for ELISA/Western blot

Disclaimer: *For in vitro Laboratory Use Only.* Not for diagnostic or therapeutic use. Not for human or animal consumption. The proper selection and use of our products is the sole responsibility of the end user, and therefore we can offer no guarantee to a specific experimental outcome. Suggested applications of our products are not recommendations to use our products in violation of any patent or as a license under any patent of ImmunoReagents, Inc.

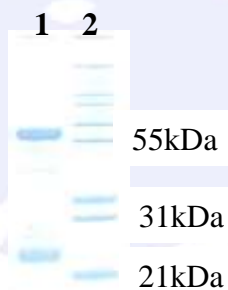
Product may not be resold or modified for resale without prior written approval of ImmunoReagents, Inc.

Testing Results

PRODUCT: Chicken anti-Rabbit IgG (H&L), HRP Conjugate
PART NUMBER: CkxRb-003-DHRPX
LOT NUMBER: 81-87-060221

<u>TESTS</u>	<u>SPECIFICATIONS</u>	<u>RESULTS</u>
Appearance:	Reddish powder	PASS
Purity:	Two predominant bands at 60 and 24 kDa based on SDS-PAGE	PASS
Specificity:	Based on IEP, this antibody has precipitin bands with: <ul style="list-style-type: none">heavy (γ) chains on Rabbit IgGlight chains on all Rabbit immunoglobulins	PASS PASS
Cross Reactivity:	Based on IEP, this antibody does not have precipitin bands to: <ul style="list-style-type: none">non-immunoglobulin Rabbit serum proteins	PASS
ELISA:	Dilution giving A^{450} reading of ≥ 1.0 when tested against Rabbit IgG (H&L) coated at 2 $\mu\text{g/ml}$	1: 89,000

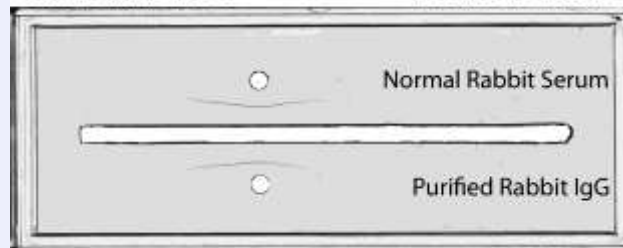
SDS-PAGE



- 1) CkxRb-003-D, Lot # 35-67-012915
- 2) Mol Weight Standard

Immunoelectrophoresis (IEP)

IEP Image for Chicken anti-Rabbit IgG (H&L), Affinity Pure
Part # CkxRb-003-D Lot # 35-67-012915



Date: June 16, 2021

Signature: 
Quality Control