
Certificate of Analysis

Product:	Goat anti-Human IgE (ϵ chain), ALP Conjugate
Part Number:	GtxHu-002-EALP
Lot Number:	62-175-010419
Amount:	0.5 mg @ 1.50 mg/ml ($E^{1\%}$ at 280 nm = 13.0)
Label:	Alkaline Phosphatase (ALP)
Form:	Liquid
Purification:	Affinity purified using solid phase Human IgE
Purity:	Affinity purified antibody is > 95% based on SDS-PAGE
Host:	Goat
Immunogen:	Purified Human IgE, ϵ chain
Buffer:	30 mM Triethanolamine, pH 7.2, 5 mM Magnesium Chloride, 0.1 mM Zinc Chloride, 1 % (w/v) BSA, Protease/IgG free
Preservative:	0.05 % (w/v) Sodium Azide
Storage:	Store undiluted liquid at 2-8 °C. For storage at -20 °C dilute with an equal volume of glycerol to prevent loss of enzymatic activity. Prepare working dilution prior to use and then discard.
Shelf Life:	1 year from date of receipt
Specificity:	Based on IEP, this antibody reacts with: <ul style="list-style-type: none">• heavy (ϵ) chains on Human IgE
Cross Reactivity:	Based on IEP, no reactivity is observed to: <ul style="list-style-type: none">• light chains on all Human immunoglobulins• non-immunoglobulin Human serum proteins• serum proteins from Bovine, Mouse or Rabbit
Country of Origin:	Goat serum was obtained from healthy animals of US origin and under the care of a registered veterinarian.
Note:	This product was prepared using Part # GtxHu-002-E, Lot # 58-189-101018.
Applications:	This conjugate is suitable ELISA, WB, IHC, ICC, and CL. The optimal working dilution should be determined by the investigator. Suggested starting dilution(s): <ul style="list-style-type: none">• 1:50-1:1,000 for Immunohistochemistry• 1:500-1:2,100 for ELISA/Western blot
Disclaimer:	<i>For in vitro Laboratory Use Only.</i> Not for diagnostic or therapeutic use. Not for human or animal consumption. The proper selection and use of our products is the sole responsibility of the end user, and therefore we can offer no guarantee to a specific experimental outcome. Suggested applications of our products are not recommendations to use our products in violation of any patent or as a license under any patent of ImmunoReagents, Inc.

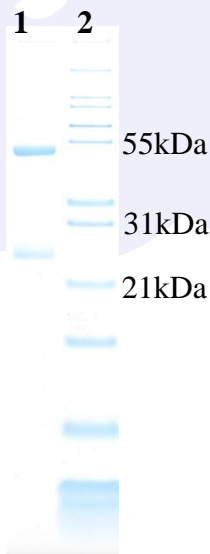
Product may not be resold or modified for resale without prior written approval of ImmunoReagents, Inc.

Testing Results

PRODUCT: Goat anti-Human IgE (ε chain), ALP Conjugate
PART NUMBER: GtxHu-002-EALP
LOT NUMBER: 62-175-010419

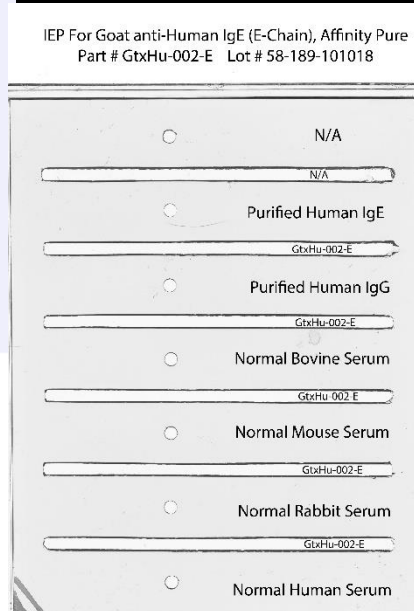
	<u>SPECIFICATIONS</u>	<u>RESULTS</u>
Appearance:	Clear and Colorless	PASS
Purity:	Two predominant bands at 50 and 24 kDa based on SDS PAGE	PASS
Specificity:	Based on IEP, this antibody has precipitin bands with: <ul style="list-style-type: none"> • heavy (ε) chains on human IgE 	PASS
Cross Reactivity:	Based on IEP, this antibody does not have precipitin bands to: <ul style="list-style-type: none"> • light chains on all human immunoglobulins • non-immunoglobulin human serum proteins • serum proteins from Bovine, Mouse or Rabbit 	PASS PASS PASS
ELISA:	Dilution giving A ⁴⁰⁵ reading of ≥ 1.0 when tested against Human IgG coated at 2 µg/ml	1:2,200

SDS-PAGE



- 1) GtxHu-002-E, Lot # 58-189-101018
- 2) Mol Weight Standard

Immunoelectrophoresis (IEP)



Date: January 8, 2019

Signature: John Alt
 Quality Control