

Certificate of Analysis

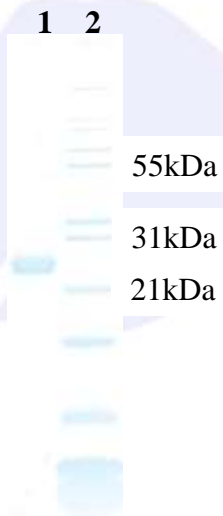
Product:	Goat anti-Rabbit IgG (H&L), F(ab)'2 Fragment
Part Number:	GtxRb-003-G
Lot Number:	90-15-120820
Concentration:	10.0 mg/ml (E ^{1%} at 280 nm = 13.0)
Amount:	1.0 mg
Form:	Clear, colorless liquid, 0.2 µm filtered
Purification:	Affinity purified using solid phase Rabbit IgG. F(ab)'2 fragment was prepared by pepsin digestion.
Purity:	≥ 90 % based on SDS-PAGE. Small amounts of intact IgG may be present.
Host:	Goat
Immunogen:	Purified Rabbit IgG, whole molecule
Buffer:	10 mM Sodium Phosphate, 0.15 M Sodium Chloride, pH 7.2
Preservative:	0.05 % (w/v) Sodium Azide
Storage:	2-8 °C
Expiration Date:	December 08, 2023
Specificity:	Based on IEP, this antibody reacts with: <ul style="list-style-type: none">• heavy (γ) chains on Rabbit IgG• light chains on all Rabbit immunoglobulins
Cross Reactivity:	Based on IEP, no reactivity is observed to: <ul style="list-style-type: none">• non-immunoglobulin Rabbit serum proteins
Country of Origin:	Goat serum was obtained from healthy animals of US origin and under the care of a registered veterinarian.
Applications:	Suitable for use in: ELISA, WB, IHC, ICC, CL, FACS, IM, IF. The optimal working dilution should be determined by the investigator.
Disclaimer:	<i>For in vitro Laboratory Use Only.</i> Not for diagnostic or therapeutic use. Not for Human or animal consumption. The proper selection and use of our products is the sole responsibility of the end user, and therefore we can offer no guarantee to a specific experimental outcome. Suggested applications of our products are not recommendations to use our products in violation of any patent or as a license under any patent of ImmunoReagents, Inc. Product may not be resold or modified for resale without prior written approval of ImmunoReagents, Inc.

Testing Results

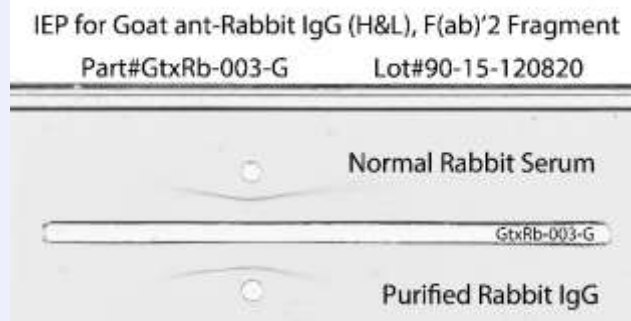
PRODUCT: Goat anti-Rabbit IgG (H&L), F(ab)'2 Fragment
PART NUMBER: GtxRb-003-G
LOT NUMBER: 90-15-120820

<u>TESTS</u>	<u>SPECIFICATIONS</u>	<u>RESULTS</u>
Appearance:	Clear and colorless	PASS
Purity:	One predominant band at 24 kDa based on SDS PAGE	PASS
Specificity:	Based on IEP, this antibody has precipitin bands with: <ul style="list-style-type: none">heavy (γ) chains on Rabbit IgGlight chains on all Rabbit immunoglobulins	PASS PASS
Cross Reactivity:	Based on IEP, no precipitin bands are observed to: <ul style="list-style-type: none">non-immunoglobulin Rabbit serum proteins	PASS

SDS-PAGE



Immunoelectrophoresis (IEP)



- 1) GtxRb-003-G, Lot # 90-15-120820
- 2) Mol Weight Standard

Date: December 10, 2020

Signature: _____


Quality Control