

## Certificate of Analysis

Product: Chicken anti-Mouse IgG (H&L), Affinity Pure

Part Number: CkxMu-003-E  
Lot Number: 67-8-101718  
Concentration: 10.0 mg/ml (E<sup>1%</sup> at 280 nm = 13.2)  
Amount: 1.0 mg  
Form: Clear, colorless liquid, 0.2 μ filtered  
Purification: Affinity purified using solid phase Mouse IgG  
Purity: ≥ 95% based on SDS-PAGE  
Host: Chicken  
Immunogen: Purified Mouse IgG, whole molecule  
Buffer: 10 mM Sodium Phosphate, 0.15 M Sodium Chloride, pH 7.2  
Preservative: 0.05 % (w/v) Sodium Azide  
Storage: 2-8 ° C  
Expiration Date: October 17, 2021

Specificity: Based on IEP, this antibody reacts with:

- heavy (γ) chains on Mouse IgG
- light chains on all Mouse immunoglobulins

Cross Reactivity: Based on IEP, no reactivity is observed to:

- non-immunoglobulin Mouse serum proteins
- IgG/serum from Human or Rabbit

Country of Origin: Ig fraction was prepared using eggs obtained from healthy hens of US origin.

Applications: This antibody has been absorbed to remove cross reactivity with Human or Rabbit IgG/serum proteins. The optimal working dilution should be determined by the investigator.  
Suitable for use in: ELISA, IP, IDA, WB, IHC, Absorption

Disclaimer: *For in vitro Laboratory Use Only.* Not for diagnostic or therapeutic use. Not for human or animal consumption. The proper selection and use of our products is the sole responsibility of the end user, and therefore we can offer no guarantee to a specific experimental outcome. Suggested applications of our products are not recommendations to use our products in violation of any patent or as a license under any patent of ImmunoReagents, Inc.

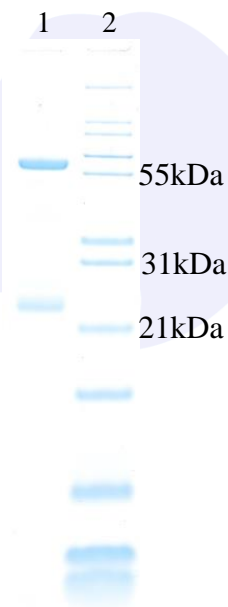
**Product may not be resold or modified for resale without prior written approval of ImmunoReagents, Inc.**

## Testing Results

**Product:** Chicken anti-Mouse IgG (H&L), Affinity Pure  
**Part Number:** CkxMu-003-E  
**Lot Number:** 67-8-101718

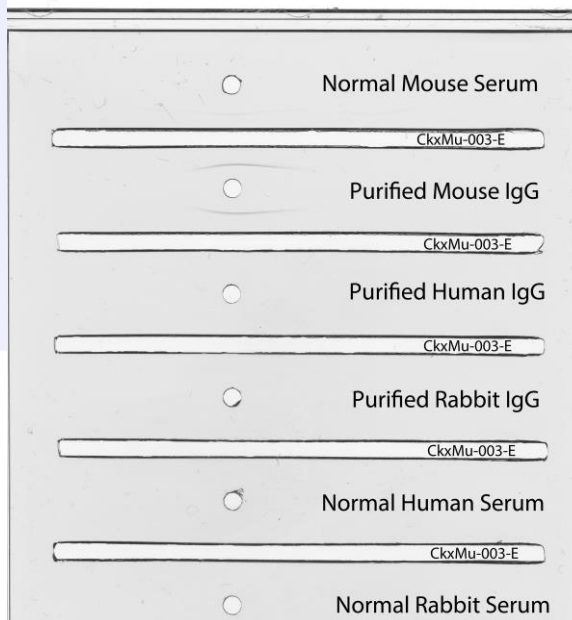
<u>TESTS</u>	<u>SPECIFICATIONS</u>	<u>RESULTS</u>
Appearance:	Clear and Colorless	PASS
Purity:	Two predominant bands at 60 and 24 kDa based on SDS PAGE	PASS
Specificity:	Based on IEP, this antibody has precipitin bands with: <ul style="list-style-type: none"> <li>• heavy (<math>\gamma</math>) chains on Mouse IgG</li> <li>• light chains on all Mouse immunoglobulins</li> </ul>	PASS PASS
Cross Reactivity:	Based on IEP, no precipitin bands are observed to: <ul style="list-style-type: none"> <li>• non-immunoglobulin Mouse serum proteins</li> <li>• IgG/serum from Human or Rabbit</li> </ul>	PASS PASS

### SDS PAGE



### Immunoelectrophoresis (IEP)

IEP For Chicken anti-Mouse IgG (H+L), Affinity Pure  
 Part # CkxMu-003-E Lot # 67-8-101718



1) CkxMu-003-E, Lot # 67-8-101718  
 2) Mol Weight Standard

Date: October 22, 2018

Signature: John Alt  
 Quality Control