
Certificate of Analysis

Product:	Goat anti-Human Kappa (κ) Light Chain, FITC Conjugate
Part Number:	GtxHu-084-DFITC
Lot Number:	86-78-031621
Amount:	0.5 mg of antibody at 1.50 mg/ml ($E^{1\%}$ at 280 nm = 13.0)
Form:	Clear, fluorescent yellow liquid
Fluorophore:	Fluorescein-5-isothiocyanate (FITC), Ex = 494 nm; Em = 518 nm
Fluor/Protein Ratio:	7.4 Moles FITC per Mole Antibody
Form:	Clear, fluorescent yellow liquid
Purification:	Antibody was affinity purified using solid phase Human Kappa (κ) Chain
Purity:	Affinity purified antibody is $\geq 95\%$ based on SDS-PAGE
Host:	Goat
Immunogen:	Purified Human Kappa (κ) Light Chain
Buffer:	10 mM Sodium Phosphate, 0.15 M Sodium Chloride, pH 7.2, 1 % (w/v) BSA, Protease/IgG free
Preservative:	0.05 % (w/v) Sodium Azide
Storage:	Store undiluted liquid at 2-8 °C. Prepare working dilution prior to use and then discard.
Shelf Life:	1 year from date of receipt
Specificity:	Based on IEP, this antibody reacts with: <ul style="list-style-type: none">• kappa (κ) light chains on all Human immunoglobulins
Cross Reactivity:	Based on IEP, no reactivity is observed to: <ul style="list-style-type: none">• heavy chains on all Human immunoglobulins• lambda (λ) light chains on all Human immunoglobulins• non-immunoglobulin Human serum proteins
Country of Origin:	Goat antiserum was obtained from healthy animals of US origin and under the care of a registered veterinarian.
Note:	This conjugate was prepared using Part # GtxHu-084-D, Lot # 79-42-103020.
Applications:	This conjugate is suitable for immunomicroscopy and flow cytometry. The optimal working dilution should be determined by the investigator. Suggested starting dilution(s): <ul style="list-style-type: none">• 1:20 – 1:2,000 for Immunohistochemistry• 1:50 – 1:5,000 for Immunocytochemistry
Disclaimer:	<i>For in vitro Laboratory Use Only.</i> Not for diagnostic or therapeutic use. Not for human or animal consumption. The proper selection and use of our products is the sole responsibility of the end user, and therefore we can offer no guarantee to a specific experimental outcome. Suggested applications of our products are not recommendations to use our products in violation of any patent or as a license under any patent of ImmunoReagents, Inc.

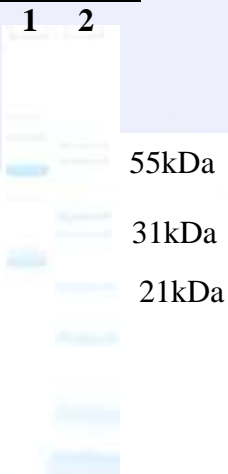
Product may not be resold or modified for resale without prior written approval of ImmunoReagents, Inc.

Testing Results

PRODUCT: Goat anti-Human Kappa (κ) Light Chain, FITC Conjugate
PART NUMBER: GtxHu-084-DFITC
LOT NUMBER: 86-78-031621

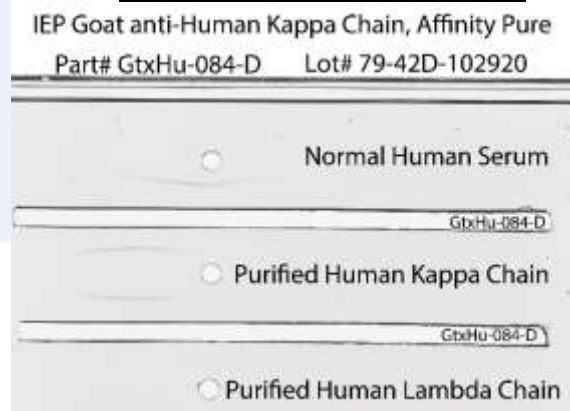
<u>TESTS</u>	<u>SPECIFICATIONS</u>	<u>RESULTS</u>
Appearance	Clear, fluorescent yellow liquid	PASS
Purity	Two predominant bands at 50 and 24 kDa based on SDS-PAGE	PASS
Specificity	Based on IEP, this antibody has a precipitin band against: <ul style="list-style-type: none"> • kappa (κ) light chains on all Human immunoglobulins 	PASS
Cross Reactivity	Based on IEP, no reactivity is observed to: <ul style="list-style-type: none"> • heavy chains on all Human immunoglobulins • lambda (λ) light chains on all Human immunoglobulins • non-immunoglobulin Human serum proteins 	PASS PASS PASS
FLISA:	Mean fluorescent value of 8 μ g/ml of FITC conjugate when tested against normal Human Kappa Chain coated at 4 μ g/ml	294 MFI's
F.I.T.:	Mean fluorescent intensity of a 1:1000 dilution at Ex-494 nm (+/-9)/Em-518 nm (+/-9)	8385 MFI's

SDS-PAGE



- 1) GtxHu-084-D, Lot # 79-42-103020
- 2) Mol Weight Standard

Immuno-electrophoresis (IEP)



Date: June 8, 2021

Signature: _____
Quality Control