

---

---

## Certificate of Analysis

Product:	Goat anti-Mouse IgG + IgM, Affinity Pure
Part Number:	GtxMu-011-E
Lot Number:	27-22-040412
Concentration:	8.91 mg/ml (E <sup>1%</sup> at 280 nm = 13.0)
Amount:	1.0 mg
Form:	Clear, colorless liquid, 0.2 µm filtered
Purification:	Affinity purified using solid phase Mouse IgG + IgMκ
Purity:	≥ 95% based on SDS-PAGE
Host:	Goat
Immunogen:	Purified Mouse IgG + IgM, whole molecule
Buffer:	10 mM Sodium Phosphate, 0.15 M Sodium Chloride, pH 7.2
Preservative:	0.05 % (w/v) Sodium Azide
Storage:	2-8 °C
Expiration Date:	August 5, 2021
Specificity:	Based on IEP, this antibody reacts with: <ul style="list-style-type: none"><li>• heavy chains on Mouse IgG + IgM</li><li>• light chains on all Mouse immunoglobulins</li></ul>
Cross Reactivity:	Based on IEP, no reactivity is observed to: <ul style="list-style-type: none"><li>• non-immunoglobulin Mouse serum proteins</li><li>• Human IgG or serum proteins</li></ul>
Country of Origin:	Goat serum was obtained from healthy animals of US origin and under the care of a registered veterinarian.
Applications:	This antibody is suitable for use in most immunoassay formats for the detection of Mouse IgG and/or IgM or as a capture antibody in ELISA type formats. This antibody is suitable for use in Western ImmunoBlots and ImmunoHistoChemistry (IHC). The optimal working dilution should be determined by the investigator.
Disclaimer:	<i>For in vitro Laboratory Use Only.</i> Not for diagnostic or therapeutic use. Not for human or animal consumption. Suggested applications of our products are not recommendations to use our products in violation of any patent or as a license under any patent of ImmunoReagents, Inc. <b>Product may not be resold or modified for resale without prior written approval of ImmunoReagents, Inc.</b>

## Testing Results

**PRODUCT:** Goat anti-Mouse IgG + IgM, Affinity Pure  
**PART NUMBER:** GtxMu-011-E  
**LOT NUMBER:** 27-22-040412

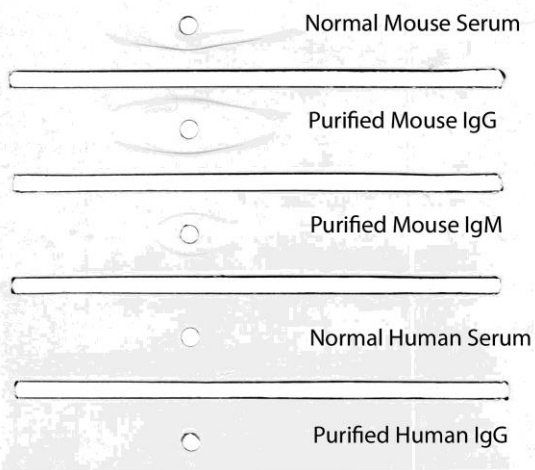
<u>TESTS</u>	<u>SPECIFICATIONS</u>	<u>RESULTS</u>
Appearance:	Clear and Colorless	PASS
Purity:	Two predominant bands at 50 and 24 kDa based on SDS PAGE	PASS
Specificity:	Based on IEP, this antibody has precipitin bands with: <ul style="list-style-type: none"><li>heavy chains on Mouse IgG + IgM</li><li>light chains on all Mouse immunoglobulins</li></ul>	PASS PASS
Cross Reactivity:	Based on IEP, no precipitin bands are observed to: <ul style="list-style-type: none"><li>non-immunoglobulin Mouse serum proteins</li><li>Human IgG or serum proteins</li></ul>	PASS PASS

### SDS PAGE



### Immunoelectrophoresis (IEP)

Part# GtxMu-011-E Lot# 27-22-040412 QCF# 3115



- 1) GtxMu-011-E Lot # 27-22-040412
- 2) Mol Weight Standard

Date: August 5, 2019

Signature: \_\_\_\_\_

  
Quality Control