

Certificate of Analysis

Product: Llama anti-Mouse IgG (H&L), Affinity Pure

Part Number: LlxMu-003-D
Lot Number: 67-2-100218
Concentration: 10.0 mg/ml (E^{1%} at 280 nm = 13.0)
Amount: 2.0 mg
Form: Clear, colorless liquid, 0.2 µm filtered
Purification: Affinity purified using solid phase Rabbit IgG
Purity: ≥ 95 % based on SDS-PAGE
Immunogen: Purified Mouse IgG, whole molecule
Buffer: 10 mM Sodium Phosphate, 0.15 M Sodium Chloride, pH 7.2
Preservative: 0.05 % (w/v) Sodium Azide
Storage: 2 - 8 °C
Expiration Date: October 2, 2021

Specificity: Based on IEP, this antibody reacts with:

- heavy (γ) chains on Mouse IgG
- light chains on all Mouse immunoglobulins

Cross Reactivity: Based on IEP, no reactivity is observed to:

- non-immunoglobulin Mouse serum proteins

Country of Origin: Llama serum was obtained from healthy animals of US origin and under the care of a registered veterinarian.

Applications: Suitable for use in: ELISA, WB, IHC, ICC, CL, FACS, IM, IF
The optimal working dilution should be determined by the investigator.

Disclaimer: *For in vitro Laboratory Use Only.* Not for diagnostic or therapeutic use. Not for human or animal consumption. The proper selection and use of our products is the sole responsibility of the end user, and therefore we can offer no guarantee to a specific experimental outcome. Suggested applications of our products are not recommendations to use our products in violation of any patent or as a license under any patent of ImmunoReagents, Inc.

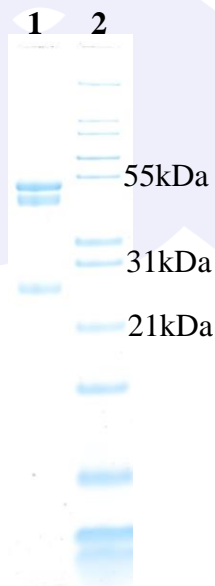
Product may not be resold or modified for resale without prior written approval of ImmunoReagents, Inc.

Testing Results

PRODUCT: Llama anti-Mouse IgG (H&L), Affinity Pure
PART NUMBER: LlxMu-003-D
LOT NUMBER: 67-2-100218

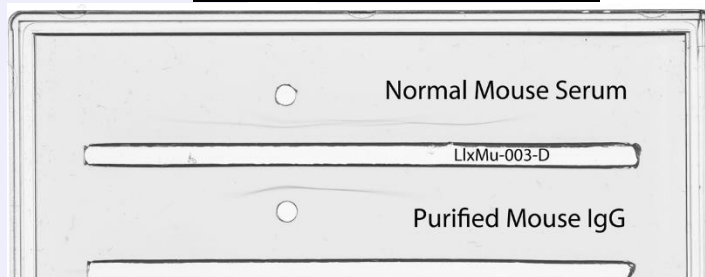
<u>TESTS</u>	<u>SPECIFICATIONS</u>	<u>RESULTS</u>
Appearance:	Clear, colorless liquid	PASS
Purity:	Three predominant bands based on SDS-PAGE: <ul style="list-style-type: none">• double band at 50 kDa• single band at 24 kDa	PASS PASS
Specificity:	Based on IEP, this antibody has precipitin bands with: <ul style="list-style-type: none">• heavy (γ) chains on Mouse IgG• light chains on all Mouse immunoglobulins	PASS PASS
Cross Reactivity:	Based on IEP, this antibody does not have precipitin bands to: <ul style="list-style-type: none">• non-immunoglobulin Mouse serum proteins	PASS

SDS-PAGE



- 1) LlxMu-003-D, Lot # 67-2-100218
- 2) Mol Weight Standard

Immunoelectrophoresis (IEP)



Date: October 8, 2018

Signature: 
Quality Control