
Certificate of Analysis

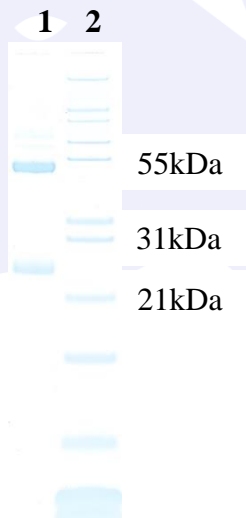
Product:	Goat anti-Llama IgG (H&L), Biotin Conjugate
Part Number:	GtxLI-003-DBIO
Lot Number:	90-139-093021
Amount:	1.0 mg of antibody at 1.50 mg/ml ($E^{1\%}$ at 280 nm = 13.0)
Purification:	Antibody was purified using solid phase Llama IgG
Purity:	Affinity purified antibody is $\geq 95\%$ based on SDS-PAGE
Host:	Goat
Immunogen:	Purified Llama IgG, whole molecule
Buffer:	10 mM Sodium Phosphate, 0.15 M Sodium Chloride, pH 7.2, 1 % (w/v) BSA, Protease/IgG free
Preservative:	0.05 % (w/v) Sodium Azide
Storage:	Store undiluted liquid at 2-8 °C. Prepare working dilution prior to use and then discard.
Shelf Life:	1 year from date of receipt
Specificity:	Based on IEP, this antibody reacts with: <ul style="list-style-type: none">• heavy (γ) chains on Llama IgG• light chains on all Llama immunoglobulins
Cross Reactivity:	Based on IEP, no reactivity is observed to: <ul style="list-style-type: none">• non-immunoglobulin Llama serum proteins
Country of Origin:	Goat serum was obtained from healthy animals of US origin and under the care of a registered veterinarian.
Note:	This conjugate was prepared using Part # GtxLI-003-D, Lot # 90-120-082321 and 79-153-092121(majority lot used).
Applications:	This conjugate is suitable for all immunoassay applications. The optimal working dilution should be determined by the investigator. Suggested starting dilution(s): <ul style="list-style-type: none">• 1:20,000 – 1:500,000 for ELISA/Western blot• 1:500 – 1:5,000 for Immunohistochemistry
Disclaimer:	<i>For in vitro Laboratory Use Only.</i> Not for diagnostic or therapeutic use. Not for human or animal consumption. The proper selection and use of our products is the sole responsibility of the end user, and therefore we can offer no guarantee to a specific experimental outcome. Suggested applications of our products are not recommendations to use our products in violation of any patent or as a license under any patent of ImmunoReagents, Inc. Product may not be resold or modified for resale without prior written approval of ImmunoReagents, Inc.

Testing Results

PRODUCT: Goat anti-Llama IgG (H&L), Biotin Conjugate
PART NUMBER: GtxLI-003-DBIO
LOT NUMBER: 90-139-093021

<u>TESTS</u>	<u>SPECIFICATIONS</u>	<u>RESULTS</u>
Appearance:	Clear, colorless liquid	PASS
Purity:	Two predominant bands at 50 and 24 kDa based on SDS-PAGE	PASS
Specificity:	Based on IEP, this antibody has precipitin bands with: <ul style="list-style-type: none"> • heavy (γ) chains on Llama IgG • light chains on all Llama immunoglobulins 	PASS PASS
Cross Reactivity:	Based on IEP, no precipitin bands are observed to: <ul style="list-style-type: none"> • non-immunoglobulin Llama serum proteins 	PASS
ELISA:	Dilution giving A^{405} reading of ≥ 1.0 when tested against Llama IgG (H&L) coated at 2 $\mu\text{g/ml}$	420,000

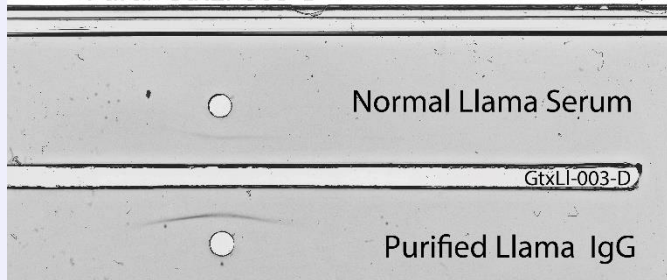
SDS-PAGE



- 1) GtxLI-003-D, Lot # 79-153-092121
- 2) Mol Weight Standard

Immuno-electrophoresis (IEP)

IEP for Goat anti-Llama IgG (H&L), Affinity Pure
 Part# GtxLI-003-D Lot# 79-153-092121



Date: October 7, 2021

Signature: _____
Quality Control