

---

---

## Certificate of Analysis

Product: Rabbit anti-Goat IgG (H&L), FITC Conjugate

Part Number: RbxGt-003-EFITC  
Lot Number: 67-6-101118  
Amount: 1.0 mg of antibody at 1.50 mg/ml ( $E^{1\%}$  at 280 nm = 13.0)  
Fluorophore: Fluorescein-5-isothiocyanate  
Amax = 494 nm; Emax = 518 nm  
Fluor/Protein Ratio: 6.5 Moles FITC per Mole Antibody  
Form: Clear, fluorescent yellow liquid  
Purification: Affinity purified using solid phase Goat IgG  
Purity: Affinity purified antibody is  $\geq 95\%$  based on SDS-PAGE  
Host: Rabbit  
Immunogen: Purified Goat IgG, whole molecule  
Buffer: 10 mM Sodium Phosphate, 0.15 M Sodium Chloride, pH 7.2,  
1 % (w/v) BSA, Protease/IgG free  
Preservative: 0.05 % (w/v) Sodium Azide  
Storage: Store undiluted liquid at 2 - 8 °C. Prepare working dilution prior to use and then discard.  
Shelf Life: 1 year from date of receipt  
Specificity: Based on IEP, this antibody reacts with:

- heavy ( $\gamma$ ) chains on Goat IgG
- light chains on all Goat immunoglobulins

Cross Reactivity: Based on IEP, no reactivity is observed to:

- non-immunoglobulin Goat serum proteins
- IgG from Human, Mouse, or Rat

Country of Origin: Rabbit serum was obtained from healthy animals of US origin and under the care of a registered veterinarian.

Applications: This conjugate is suitable for use in: FLISA, IF, IM, IHC, FACS. The optimal working dilution should be determined by the investigator. Suggested starting dilution(s):

- 1:20 – 1:2,000 for Immunohistochemistry
- 1:50 – 1:5,000 for Immunocytochemistry

Disclaimer: *For in vitro Laboratory Use Only.* Not for diagnostic or therapeutic use. Not for human or animal consumption. The proper selection and use of our products is the sole responsibility of the end user, and therefore we can offer no guarantee to a specific experimental outcome. Suggested applications of our products are not recommendations to use our products in violation of any patent or as a license under any patent of ImmunoReagents, Inc.

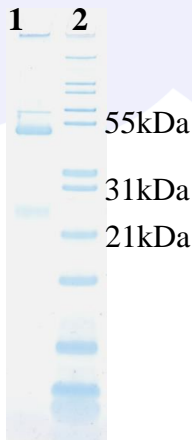
**Product may not be resold or modified for resale without prior written approval of ImmunoReagents, Inc.**

## Testing Results

**PRODUCT:** Rabbit anti-Goat IgG (H&L), FITC Conjugate  
**PART NUMBER:** RbxGt-003-EFITC  
**LOT NUMBER:** 67-6-101118

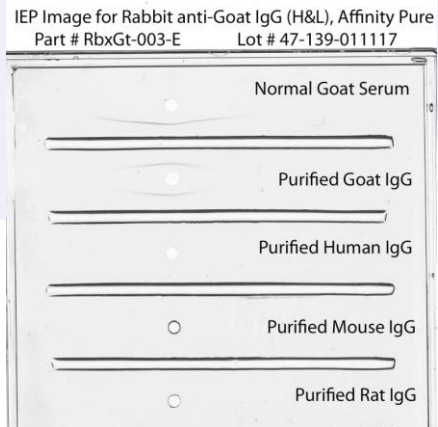
<u>TEST</u>	<u>SPECIFICATIONS</u>	<u>RESULTS</u>
Appearance:	Clear, fluorescent yellow liquid	PASS
Purity:	Two predominant bands at 50 and 24 kDa based on SDS-PAGE	PASS
Specificity:	Based on IEP, this antibody has precipitin bands with: <ul style="list-style-type: none"> <li>• heavy (<math>\gamma</math>) chains on Goat IgG</li> <li>• light chains on all Goat immunoglobulins</li> </ul>	PASS PASS
Cross Reactivity:	Based on IEP, this antibody does not have precipitin bands to: <ul style="list-style-type: none"> <li>• non-immunoglobulin Goat serum proteins</li> <li>• IgG from Human, Mouse, or Rat</li> </ul>	PASS PASS
FLISA:	Mean fluorescent value of 8 $\mu\text{g/ml}$ of FITC conjugate when tested against normal Goat IgG coated at 4 $\mu\text{g/ml}$	2155 MFI's
F.I.T.:	Mean fluorescent intensity of a 1:1000 dilution at Ex-488 nm (+/-9)/Em-518 nm (+/-9)	9718 MFI's

### SDS-PAGE



- 1) RbxGt-003-E, Lot # 47-139-011117
- 2) Mol Weight Standard

### Immuno-electrophoresis (IEP)



Date: October 16, 2018

Signature: \_\_\_\_\_

*John Slack*  
Quality Control