

Certificate of Analysis

Product:	Goat anti-Rabbit IgG (H&L), Protein G Purified
Part Number:	GtxRb-003-Z
Lot Number	20-147-110216
Concentration:	8.41 mg/ml ($E^{1\%}$ at 280 nm = 13.0)
Amount:	2.0 mg
Form:	Clear, colorless liquid, 0.2 μ m filtered
Purification:	Protein G chromatography
Purity:	≥ 95 % based on SDS-PAGE
Host:	Goat
Immunogen:	Purified Rabbit IgG, whole molecule
Buffer:	10 mM Sodium Phosphate, 0.15 M Sodium Chloride, pH 7.2
Preservative:	0.05 % (w/v) Sodium Azide
Storage:	2 - 8 $^{\circ}$ C
Expiration Date:	April 5, 2021
Specificity:	Based on IEP, this antibody reacts with: <ul style="list-style-type: none">• heavy (γ) chains on Rabbit IgG• light chains on all Rabbit immunoglobulins
Cross Reactivity:	Based on IEP, no reactivity is observed to: <ul style="list-style-type: none">• non-immunoglobulin Rabbit serum proteins
Country of Origin:	Goat serum was obtained from healthy animals of US origin and under the care of a registered veterinarian.
Applications:	Suitable for use in: ELISA, WB, IHC, ICC, CL, FACS, IM, IF The optimal working dilution should be determined by the investigator.
Disclaimer:	<i>For in vitro Laboratory Use Only.</i> Not for diagnostic or therapeutic use. Not for human or animal consumption. The proper selection and use of our products is the sole responsibility of the end user, and therefore we can offer no guarantee to a specific experimental outcome. Suggested applications of our products are not recommendations to use our products in violation of any patent or as a license under any patent of ImmunoReagents, Inc.

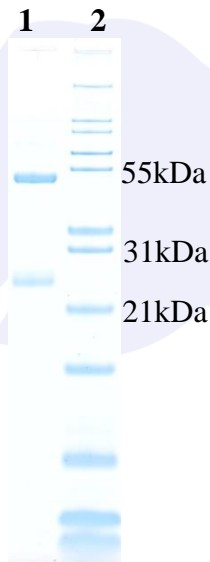
Product may not be resold or modified for resale without prior written approval of ImmunoReagents, Inc.

Testing Results

PRODUCT: Goat anti-Rabbit IgG (H&L), Protein G Purified
PART NUMBER: GtxRb-003-Z
LOT NUMBER: 20-147-110216

<u>TESTS</u>	<u>SPECIFICATIONS</u>	<u>RESULTS</u>
Appearance:	Clear, colorless liquid	PASS
Purity:	Two predominant bands at 50 and 24 kDa based on SDS-PAGE	PASS
Specificity:	Based on IEP, this antibody has precipitin bands with: <ul style="list-style-type: none">• heavy (γ) chains on Rabbit IgG• light chains on all Rabbit immunoglobulins	PASS PASS
Cross Reactivity:	Based on IEP, no precipitin bands are observed to: <ul style="list-style-type: none">• non-immunoglobulin Rabbit serum proteins	PASS

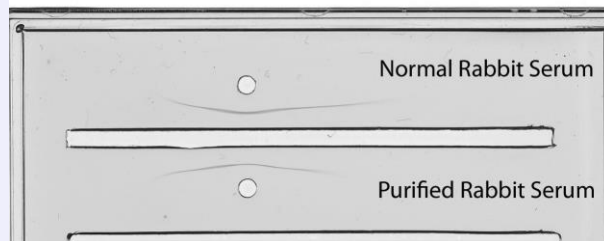
SDS-PAGE



- 1) GtxRb-003-Z, Lot # 20-147-110216
- 2) Mol Weight Standard

Immunoelectrophoresis (IEP)

IEP Image for Goat anti-Rabbit IgG (H&L), Protein G Purified
Part # GtxRb-003-Z Lot # 20-147-110216



Date: April 5, 2019

Signature: _____


Quality Control