

---

---

## Certificate of Analysis

Product: Rabbit anti-Human IgM ( $\mu$  chain), Affinity Pure

Part Number: RbxHu-006-D

Lot Number: 33-57-110613

Concentration: 8.71 mg/ml ( $E^{1\%}$  at 280 nm = 13.0)

Amount: 1.0 mg

Form: Clear, colorless liquid, 0.2  $\mu$ m filtered

Purification: Affinity purified using solid phase Human IgM

Purity:  $\geq 95$  % based on SDS-PAGE

Host: Rabbit

Immunogen: Purified Human IgM,  $\mu$  chain

Buffer: 10 mM Sodium Phosphate, 0.15 M Sodium Chloride, pH 7.2

Preservative: 0.05 % (w/v) Sodium Azide

Storage: 2-8  $^{\circ}$ C

Expiration Date: September 20, 2021

Specificity: Based on IEP, this antibody reacts with:

- heavy ( $\mu$ ) chains on Human IgM

Cross Reactivity: Based on IEP, no reactivity is observed to:

- light chains on all Human immunoglobulins
- non-immunoglobulin Human serum proteins

Country of Origin: Rabbit serum was obtained from healthy animals of US origin and under the care of a registered veterinarian.

Applications: Suitable for use in: ELISA, WB, IHC, ICC, CL, FACS, IM, IF  
The optimal working dilution should be determined by the investigator.

Disclaimer: *For in vitro Laboratory Use Only.* Not for diagnostic or therapeutic use. Not for human or animal consumption. The proper selection and use of our products is the sole responsibility of the end user, and therefore we can offer no guarantee to a specific experimental outcome. Suggested applications of our products are not recommendations to use our products in violation of any patent or as a license under any patent of ImmunoReagents, Inc.

**Product may not be resold or modified for resale without prior written approval of ImmunoReagents, Inc.**

---

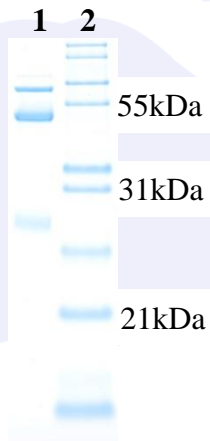
---

## Testing Results

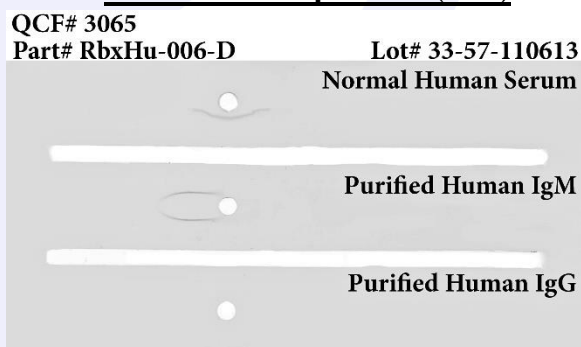
**PRODUCT:** Rabbit anti-Human IgM ( $\mu$  chain), Affinity Pure**PART NUMBER:** RbxHu-006-D**LOT NUMBER:** 33-57-110613

<u>TESTS</u>	<u>SPECIFICATIONS</u>	<u>RESULTS</u>
Appearance:	Clear, colorless liquid	PASS
Purity:	Two predominant bands at 50 and 24 kDa based on SDS-PAGE	PASS
Specificity:	Based on IEP, this antibody has precipitin bands with: <ul style="list-style-type: none"><li>heavy (<math>\mu</math>) chains on Human IgM</li></ul>	PASS
Cross Reactivity:	Based on IEP, this antibody does not have precipitin bands to: <ul style="list-style-type: none"><li>light chains on all Human immunoglobulins</li><li>non-immunoglobulin Human serum proteins</li></ul>	PASS PASS

### SDS-PAGE



### Immunoelectrophoresis (IEP)



1) RbxHu-006-D, Lot # 33-57-110613

2) Mol Weight Standard

Date: September 20, 2019

Signature: \_\_\_\_\_

  
Quality Control

