
Certificate of Analysis

Product: Goat anti-Rabbit IgG (H&L), F(ab)'2 Fragment, FITC Conjugate

Part Number: GtxRb-003-JFITC

Lot Number: 81-27-111320

Amount: 0.5 mg of antibody at 1.50 mg/ml ($E^{1\%}$ at 280 nm = 13.0)

Form: Clear, fluorescent yellow liquid

Fluorophore: Fluorescein-5-isothiocyanate (A_{max} = 494 nm; E_{max} = 518 nm)

Fluor/Protein Ratio: 8.3 Moles FITC per Mole Antibody

Purification: Antibody was affinity purified using solid phase Rabbit IgG. F(ab)'2 fragment was prepared by pepsin digestion.

Purity: $\geq 90\%$ based on SDS-PAGE. Small amounts of intact IgG may be present.

Host: Goat

Immunogen: Purified Rabbit IgG, whole molecule

Buffer: 10 mM Sodium Phosphate, 0.15 M Sodium Chloride, pH 7.2,
1 % (w/v) BSA, Protease/IgG free

Preservative: 0.05 % (w/v) Sodium Azide

Storage: Store undiluted liquid at 2-8 °C. Prepare working dilution prior to use and then discard.

Shelf Life: 1 year from date of receipt

Specificity: Based on IEP, this antibody reacts with:

- heavy (γ) chains on Rabbit IgG
- light chains on all Rabbit immunoglobulins

Cross Reactivity: Based on IEP, no reactivity is observed to:

- non-immunoglobulin Rabbit serum proteins
- serum proteins from Bovine, Human, or Mouse
- IgG from Human or Mouse

Country of Origin: Goat serum was obtained from healthy animals of US origin and under the care of a registered veterinarian.

Note: This conjugate was prepared using Part # GtxRb-003-J, Lot # 79-29-101320

Applications: This conjugate is suitable for immunomicroscopy and flow cytometry. The optimal working dilution should be determined by the investigator. Suggested starting dilution(s):

- 1:20 – 1:2,000 for Immunohistochemistry
- 1:50 – 1:5,000 for Immunocytochemistry

Disclaimer: *For in vitro Laboratory Use Only.* Not for diagnostic or therapeutic use. Not for human or animal consumption. The proper selection and use of our products is the sole responsibility of the end user, and therefore we can offer no guarantee to a specific experimental outcome. Suggested applications of our products are not recommendations to use our products in violation of any patent or as a license under any patent of ImmunoReagents, Inc.

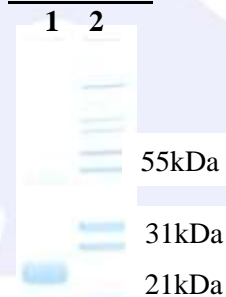
Product may not be resold or modified for resale without prior written approval of ImmunoReagents, Inc.

Testing Results

PRODUCT: Goat anti-Rabbit IgG (H&L), F(ab)'2 Fragment, FITC Conjugate
PART NUMBER: GtxRb-003-JFITC
LOT NUMBER: 81-27-111320

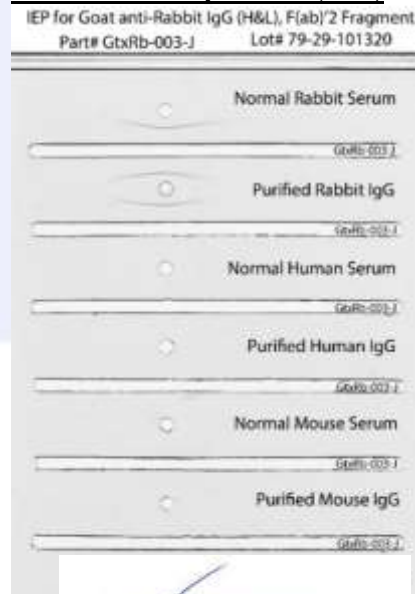
<u>TEST</u>	<u>SPECIFICATIONS</u>	<u>RESULTS</u>
Appearance:	Clear, fluorescent yellow liquid	PASS
Purity:	One predominant band at 24 kDa based on SDS-PAGE	PASS
Specificity:	Based on IEP, this antibody has precipitin bands with: <ul style="list-style-type: none">heavy (γ) chains on Rabbit IgGlight chains on all Rabbit immunoglobulins	PASS PASS
Cross Reactivity:	Based on IEP, no precipitin bands are observed to: <ul style="list-style-type: none">non-immunoglobulin Rabbit serum proteinsserum proteins from Bovine, Human, or MouseIgG from Human or Mouse	PASS PASS PASS
FLISA:	Mean fluorescent value of 8 μ g/ml of FITC conjugate when tested against normal Rabbit IgG coated at 4 μ g/ml	3572 MFI's

SDS-PAGE



- 1) GtxRb-003-J, Lot # 79-29-101320
2) Mol Weight Standard

Immunoelectrophoresis (IEP)



Date: November 19, 2020

Signature: _____

Quality Control