

---

---

## Certificate of Analysis

Product: Sheep anti-Rabbit IgG (H&L), HRP Conjugate

Part Number: ShxRb-003-DHRPX

Lot Number: 90-60-042321

Amount: 1.0 mg of lyophilized antibody ( $E^{1\%}$  at 280 nm = 13.0)  
(Product has been overfilled to ensure maximum recovery)

Label: Horseradish Peroxidase (HRP)

Form: Lyophilized

Purification: Affinity purified using solid phase Rabbit IgG

Purity: Affinity purified antibody is  $\geq 95\%$  based on SDS-PAGE

Host: Sheep

Immunogen: Purified Rabbit IgG, whole molecule

Buffer: 10 mM Sodium Phosphate, 0.15 M Sodium Chloride, pH 7.2, 1 % (w/v) BSA, Protease/IgG free

Preservative: 0.1 % (v/v) ProClin 150 – *Use of Sodium Azide will inhibit enzyme activity of horseradish peroxidase*

Reconstitution: Rehydrate with 1.1 ml of deionized water. Allow reconstituted product to stand at room temperature for at least 30 minutes prior to dilution. If necessary, centrifuge to remove any particulates. Prepare fresh working dilution daily.

Storage: Store lyophilized material at 2-8 °C. For storage at -20 °C after reconstitution, dilute with an equal volume of glycerol to prevent loss of enzymatic activity. Prepare working dilution prior to use and then discard.

Shelf Life: 1 year from date of receipt

Specificity: Based on IEP, this antibody reacts with:

- heavy ( $\gamma$ ) chains on Rabbit IgG
- light chains on all Rabbit immunoglobulins

Cross Reactivity: Based on IEP, no reactivity is observed to:

- non-immunoglobulin Rabbit serum proteins

Country of Origin: Sheep antiserum was obtained from healthy animals of US origin and under the care of a registered veterinarian.

Note: This conjugate was prepared using Part # ShxRb-003-D, Lot # 66-6-061318.

Applications: This conjugate is suitable for all immunoassay applications. The optimal working dilution should be determined by the investigator. Suggested starting dilution(s):

- 1:500-1:5,000 for Immunohistochemistry
- 1:200-1:5,000 for ELISA/Western blot

Disclaimer: *For in vitro Laboratory Use Only.* Not for diagnostic or therapeutic use. Not for human or animal consumption. The proper selection and use of our products is the sole responsibility of the end user, and therefore we can offer no guarantee to a specific experimental outcome. Suggested applications of our products are not recommendations to use our products in violation of any patent or as a license under any patent of ImmunoReagents, Inc.

**Product may not be resold or modified for resale without prior written approval of ImmunoReagents, Inc.**

---

**Testing Results**

---

**PRODUCT:** Sheep anti-Rabbit IgG (H&L), HRP Conjugate**PART NUMBER:** ShxRb-003-DHRPX**LOT NUMBER:** 90-60-042321**TESTS****SPECIFICATIONS****RESULTS**Appearance: Reddish powder **PASS**Purity: Two predominant bands at 50 and 24 kDa based on SDS-PAGE **PASS**

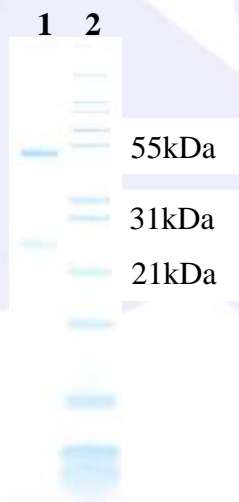
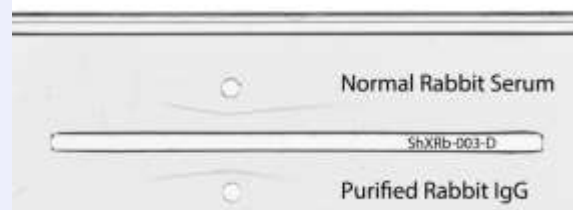
Specificity: Based on IEP, this antibody has precipitin bands with:

- heavy ( $\gamma$ ) chains on Rabbit IgG **PASS**
- light chains on all Rabbit immunoglobulins **PASS**

Cross Reactivity: Based on IEP, this antibody does not have precipitin bands to:

- non-immunoglobulin Rabbit serum proteins **PASS**

ELISA: Dilution giving  $A^{450}$  reading of  $\geq 1.0$  when tested against Rabbit IgG (H&L) coated at 2  $\mu\text{g/ml}$  **1: 157,000**

**SDS-PAGE****Immunoelectrophoresis (IEP)**IEP For Sheep anti-Rabbit IgG (H+L), Affinity Pure  
Part # ShxRb-003-D Lot # 66-6-061318

- 1) ShxRb-003-D, Lot # 66-6-061318
- 2) Mol Weight Standard

Date: May 7, 2021

Signature:  **Quality Control**