

## Certificate of Analysis

|                    |  |
|--------------------|--|
| Product:           | Goat anti-Human IgM ( $\mu$ chain), Affinity Pure  |
| Part Number:       | GtxHu-006-E  |
| Lot Number:        | 80-22-103020   |
| Concentration:     | 2.5 mg/ml ( $E^{1\%}$ at 280 nm = 14.0)  |
| Amount:            | 2.0 mg   |
| Form:              | Clear, colorless liquid, 0.2 $\mu$ m filtered  |
| Purification:      | Affinity purified using solid phase Human IgM  |
| Purity:            | $\geq 95\%$ based on SDS-PAGE.   |
| Host:              | Goat   |
| Immunogen:         | Purified Human IgM, $\mu$ chain  |
| Buffer:            | 10 mM Sodium Phosphate, 0.15 M Sodium Chloride, pH 7.2   |
| Preservative:      | 0.05 % (w/v) Sodium Azide  |
| Storage:           | 2-8 ° C  |
| Expiration Date:   | October 30, 2023   |
| Specificity:       | Based on IEP, this antibody reacts with: <ul style="list-style-type: none"><li>• heavy (<math>\mu</math>) chains on Human IgM</li></ul>  |
| Cross Reactivity:  | Based on IEP, no reactivity is observed to: <ul style="list-style-type: none"><li>• light chains on all Human immunoglobulins</li><li>• non-immunoglobulin Human serum proteins</li><li>• Human IgA or IgG</li></ul>   |
| Country of Origin: | Goat serum was obtained from healthy animals of US origin and under the care of a registered veterinarian.<br>Note: This product was produced by dilution of Part # GtxHu-006-E, lot # 61-178-062520   |
| Applications:      | The optimal working dilution should be determined by the investigator.<br>Suitable for use in: ELISA, IP, IDA, WB, IHC, Absorption   |
| Disclaimer:        | <i>For in vitro Laboratory Use Only.</i> Not for diagnostic or therapeutic use. Not for Human or animal consumption. The proper selection and use of our products is the sole responsibility of the end user, and therefore we can offer no guarantee to a specific experimental outcome. Suggested applications of our products are not recommendations to use our products in violation of any patent or as a license under any patent of ImmunoReagents, Inc. |

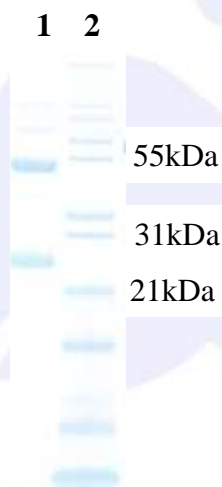
**Product may not be resold or modified for resale without prior written approval of ImmunoReagents, Inc.**

## Testing Results

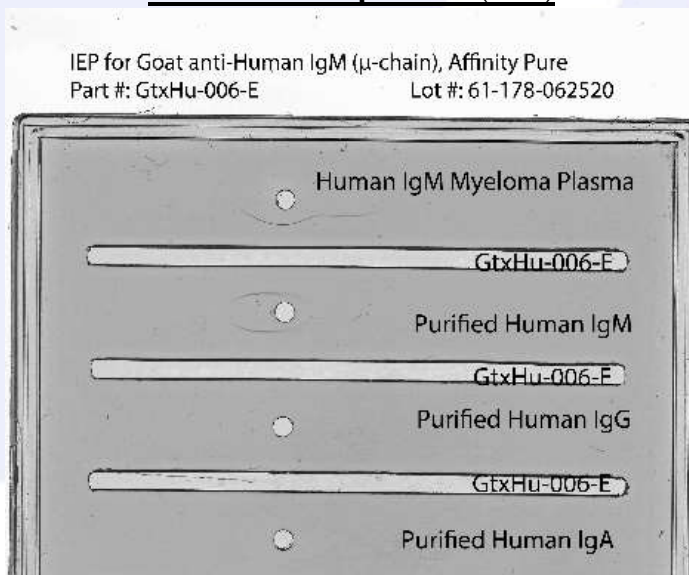
**PRODUCT:** Goat anti-Human IgM ( $\mu$  chain), Affinity Pure  
**PART NUMBER:** GtxHu-006-E  
**LOT NUMBER:** 80-22-103020

| <u>TESTS</u>      | <u>SPECIFICATIONS</u>   | <u>RESULTS</u>       |
|-------------------|---|----------------------|
| Appearance:       | Clear and Colorless   | PASS                 |
| Purity:           | Two predominant bands at 50 and 24 kDa based on SDS PAGE  | PASS                 |
| Specificity:      | Based on IEP, this antibody has precipitin bands with: <ul style="list-style-type: none"><li>heavy (<math>\mu</math>) chains on Human IgM</li></ul>   | PASS                 |
| Cross Reactivity: | Based on IEP, this antibody does not have precipitin bands to: <ul style="list-style-type: none"><li>light chains on all Human immunoglobulins</li><li>non-immunoglobulin Human serum proteins</li><li>Human IgA or IgG</li></ul> | PASS<br>PASS<br>PASS |

### SDS PAGE



### Immunoelectrophoresis (IEP)



- 1) GtxHu-006-E, Lot # 61-178-062520
- 2) Mol Weight Standard

Date: November 3, 2020

Signature:   
Quality Control