
Certificate of Analysis

Product: Goat anti-Human IgE (ϵ chain), DyLight[®] 650 Conjugate

Part Number: GtxHu-002-E650NHSX

Lot Number: 68-120-081919

Amount: 1.0 mg of lyophilized antibody (E ¹% at 280 nm = 13.0)
(Product has been overfilled to ensure maximum recovery)

Fluorophore: DyLight[®] 650 (Ex = 652 nm; Em = 672 nm)

Fluor/Protein Ratio: 2.5 Moles DyLight[®] 650 per Mole Antibody

Purification: Antibody was affinity purified using solid phase Human IgE

Purity: Affinity purified antibody is ≥ 95 % based on SDS-PAGE

Host: Goat

Immunogen: Purified Human IgE, ϵ chain

Buffer: 10 mM Sodium Phosphate, 0.15 M Sodium Chloride, pH 7.2,
1 % (w/v) BSA, Protease/IgG free

Preservative: 0.05 % (w/v) Sodium Azide

Reconstitution: Rehydrate with 1.1 ml of deionized water. Allow reconstituted product to stand at room temperature for at least 30 minutes prior to dilution. If necessary, centrifuge to remove any particulates. Prepare fresh working dilution daily.

Storage: Store lyophilized material at 2-8 °C. For storage at -20 °C after reconstitution, dilute with an equal volume of glycerol to prevent loss of enzymatic activity. Prepare working dilution prior to use and then discard.

Shelf Life: 1 year from date of receipt

Specificity: Based on IEP, this antibody reacts with:

- heavy (ϵ) chains on Human IgE

Cross Reactivity: Based on IEP, no reactivity is observed to:

- light chains on all Human immunoglobulins
- non-immunoglobulin Human serum proteins
- serum proteins from Bovine, Mouse, or Rabbit

Country of Origin: Goat serum was obtained from healthy animals of US origin and under the care of a registered veterinarian.

Note: This conjugate was prepared using Part # GtxHu-002-E, Lot # 58-189-101018.

Applications: This conjugate is suitable for immunomicroscopy and flow cytometry. The optimal working dilution should be determined by the investigator. Suggested starting dilution(s):

- 1:20 – 1:2,000 for most applications

Disclaimer: *For in vitro Laboratory Use Only.* Not for diagnostic or therapeutic use. Not for Human or animal consumption. The proper selection and use of our products is the sole responsibility of the end user, and therefore we can offer no guarantee to a specific experimental outcome. Suggested applications of our products are not recommendations to use our products in violation of any patent or as a license under any patent of ImmunoReagents, Inc.

Product may not be resold or modified for resale without prior written approval of ImmunoReagents, Inc.

Testing Results

PRODUCT: Goat anti-Human IgE (ϵ chain), DyLight® 650 Conjugate
PART NUMBER: GtxHu-002-E650NHSX
LOT NUMBER: 68-120-081919

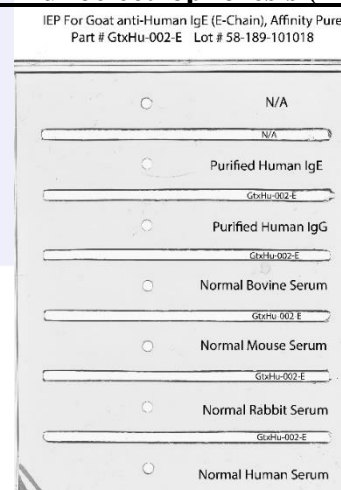
| <u>TESTS</u> | <u>SPECIFICATIONS</u> | <u>RESULTS</u> |
|-------------------|---|----------------------|
| Appearance: | Blue fluorescent powder | PASS |
| Purity: | Two predominant bands at 50 and 24 kDa based on SDS-PAGE | PASS |
| Specificity: | Based on IEP, this antibody has precipitin bands with: <ul style="list-style-type: none">heavy (ϵ) chains on Human IgE | PASS |
| Cross Reactivity: | Based on IEP, this antibody does not have precipitin bands to: <ul style="list-style-type: none">light chains on all Human immunoglobulinsnon-immunoglobulin Human serum proteinsserum proteins from Bovine, Mouse, or Rabbit | PASS PASS PASS |
| FLISA: | Mean fluorescent value of 8 μ g/ml of DyLight® conjugate when tested against Human IgE coated at 4 μ g/ml | 147 MFI's |
| F.I.T.: | Mean fluorescent intensity of a 1:1000 dilution at Ex-652 nm (+/-9)/Em-672 nm (+/-9) | 713 MFI's |

SDS-PAGE



- 1) GtxHu-002-E, Lot # 58-189-101018
- 2) Mol Weight Standard

Immunoelectrophoresis (IEP)



Date: August 30, 2019

Signature: _____

Quality Control

