
Certificate of Analysis

| | |
|--------------------|--|
| Product: | Donkey anti-Sheep IgG (H&L), HRP Conjugate |
| Part Number: | DkxSh-003-FHRPX |
| Lot Number: | 69-91-102519 |
| Amount: | 1.0 mg of lyophilized antibody (E ^{1%} at 280 nm = 13.0) (Product has been overfilled to ensure maximum recovery) |
| Label: | Horseradish Peroxidase (HRP) |
| Form: | Lyophilized |
| Purification: | Affinity purified using solid phase Sheep IgG |
| Purity: | Affinity purified antibody is ≥ 95 % based on SDS-PAGE |
| Host: | Donkey |
| Immunogen: | Purified Sheep IgG, whole molecule |
| Buffer: | 10 mM Sodium Phosphate, 0.15 M Sodium Chloride, pH 7.2, 1 % (w/v) BSA, Protease/IgG free |
| Preservative: | 0.1 % (v/v) ProClin 150 – <i>Use of Sodium Azide will inhibit enzyme activity of horseradish peroxidase</i> |
| Reconstitution: | Rehydrate with 1.1 ml of deionized water. Allow reconstituted product to stand at room temperature for at least 30 minutes prior to dilution. If necessary, centrifuge to remove any particulates. Prepare fresh working dilution daily. |
| Storage: | Store lyophilized material at 2-8 °C. For storage at -20 °C after reconstitution, dilute with an equal volume of glycerol to prevent loss of enzymatic activity. Prepare working dilution prior to use and then discard. |
| Shelf Life: | 1 year from date of receipt |
| Specificity: | Based on IEP, this antibody reacts with: <ul style="list-style-type: none">• heavy (γ) chains on Sheep IgG• light chains on all Sheep immunoglobulins |
| Cross Reactivity: | Based on IEP, no reactivity is observed to: <ul style="list-style-type: none">• non-immunoglobulin Sheep serum proteins• IgG from Human, Mouse, or Rabbit |
| Country of Origin: | Donkey antiserum was obtained from healthy animals of US origin and under the care of a registered veterinarian. |
| Note: | This conjugate was prepared using Part # DkxSh-003-F, Lot # 68-139-100719. |
| Applications: | This conjugate is suitable for use in: ELISA, WB, IHC, CL. The optimal working dilution should be determined by the investigator. Suggested starting dilution(s): <ul style="list-style-type: none">• 1:500-1:5,000 for Immunohistochemistry• 1:200 – 1:5,000 for ELISA/Western blot |
| Disclaimer: | <i>For in vitro Laboratory Use Only.</i> Not for diagnostic or therapeutic use. Not for human or animal consumption. The proper selection and use of our products is the sole responsibility of the end user, and therefore we can offer no guarantee to a specific experimental outcome. Suggested applications of our products are not recommendations to use our products in violation of any patent or as a license under any patent of ImmunoReagents, Inc. |

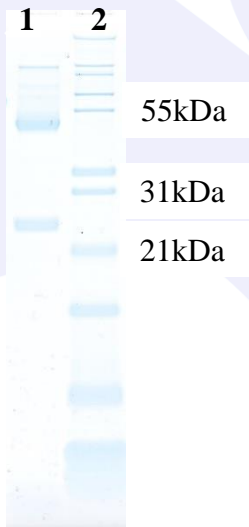
Product may not be resold or modified for resale without prior written approval of ImmunoReagents, Inc.

Testing Results

PRODUCT: Donkey anti-Sheep IgG (H&L), HRP Conjugate
PART NUMBER: DkxSh-003-FHRPX
LOT NUMBER: 69-91-102519

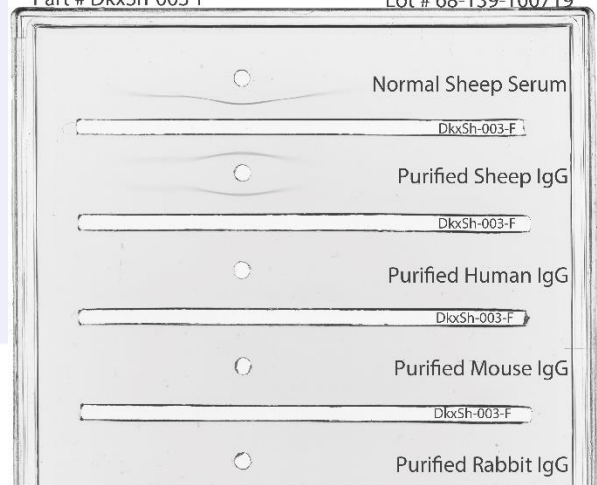
| <u>TESTS</u> | <u>SPECIFICATIONS</u> | <u>RESULTS</u> |
|-------------------|---|----------------|
| Appearance: | Reddish powder | PASS |
| Purity: | Two predominant bands at 50 and 24 kDa based on SDS-PAGE | PASS |
| Specificity: | Based on IEP, this antibody has precipitin bands with: <ul style="list-style-type: none"> • heavy (γ) chains on Sheep IgG • light chains on all Sheep immunoglobulins | PASS PASS |
| Cross Reactivity: | Based on IEP, this antibody does not have precipitin bands to: <ul style="list-style-type: none"> • non-immunoglobulin Sheep serum proteins • IgG from Human, Mouse, or Rabbit | PASS PASS |
| ELISA: | Dilution giving an A ⁴⁵⁰ reading of ≥ 1.0 when tested against Sheep IgG (H&L) coated at 2 μ g/ml | 1: 190,000 |

SDS-PAGE



Immunoelectrophoresis (IEP)

IEP for Donkey anti-Sheep IgG (H&L), Affinity Pure
 Part # DkxSh-003-F Lot # 68-139-100719



- 1) DkxSh-003-F, Lot # 68-139-100719
- 2) Mol Weight Standard

Date: November 8, 2019

Signature: _____
 Quality Control