

---

---

## Certificate of Analysis

Product: Donkey anti-Sheep IgG (H&L), FITC Conjugate

Part Number: DkxSh-003-DFITC  
Lot Number: 67-7-101118  
Amount: 2.0 mg of antibody at 1.50 mg/ml ( $E^{1\%}$  at 280 nm = 13.0)  
Fluorophore: Fluorescein-5-isothiocyanate ( $A_{max}$  = 494 nm;  $E_{max}$  = 518 nm)  
Fluor/Protein Ratio: 7.0 Moles FITC per Mole Antibody  
Form: Clear, fluorescent yellow liquid  
Purification: Antibody was affinity purified using solid phase Sheep IgG  
Purity: Affinity purified antibody is  $\geq 95\%$  based on SDS-PAGE  
Host: Donkey  
Immunogen: Purified Sheep IgG, whole molecule  
Buffer: 10 mM Sodium Phosphate, 0.15 M Sodium Chloride, pH 7.2,  
1 % (w/v) BSA, Protease/IgG free  
Preservative: 0.05 % (w/v) Sodium Azide  
Storage: 2 - 8 °C  
Shelf Life: 1 year from date of receipt

Specificity: Based on IEP, this antibody reacts with:

- heavy ( $\gamma$ ) chains on Sheep IgG
- light chains on all Sheep immunoglobulins

Cross Reactivity: Based on IEP, no reactivity is observed to:

- non-immunoglobulin Sheep serum proteins

Country of Origin: Donkey serum was obtained from healthy animals of US origin and under the care of a registered veterinarian.

Note: This conjugate was prepared using Part # DkxSh-003-D, Lot # 20-135-100416.

Applications: This conjugate is suitable for use in: FLISA, IF, IM, IHC, FACS. The optimal working dilution should be determined by the investigator. Suggested starting dilution(s):

- 1:20 – 1:2,000 for Immunohistochemistry
- 1:50 – 1:5,000 for Immunocytochemistry

Disclaimer: *For in vitro Laboratory Use Only.* Not for diagnostic or therapeutic use. Not for human or animal consumption. The proper selection and use of our products is the sole responsibility of the end user, and therefore we can offer no guarantee to a specific experimental outcome. Suggested applications of our products are not recommendations to use our products in violation of any patent or as a license under any patent of ImmunoReagents, Inc.

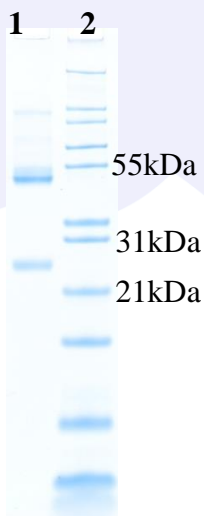
**Product may not be resold or modified for resale without prior written approval of ImmunoReagents, Inc.**

## Testing Results

**PRODUCT:** Donkey anti-Sheep IgG (H&L), FITC Conjugate  
**PART NUMBER:** DkxSh-003-DFITC  
**LOT NUMBER:** 67-7-101118

<u>TEST</u>	<u>SPECIFICATIONS</u>	<u>RESULTS</u>
Appearance:	Clear, fluorescent yellow liquid	PASS
Purity:	Two predominant bands at 50 and 24 kDa based on SDS-PAGE	PASS
Specificity:	Based on IEP, this antibody has precipitin bands with: <ul style="list-style-type: none"><li>heavy (<math>\gamma</math>) chains on Sheep IgG</li><li>light chains on all Sheep immunoglobulins</li></ul>	PASS PASS
Cross Reactivity:	Based on IEP, no precipitin bands are observed to: <ul style="list-style-type: none"><li>non-immunoglobulin Sheep serum proteins</li></ul>	PASS
FLISA:	Mean fluorescent value of 8 $\mu\text{g/ml}$ of FITC conjugate when tested against normal Sheep IgG coated at 4 $\mu\text{g/ml}$	1652 MFI's
F.I.T.:	Mean fluorescent intensity of a 1:1000 dilution at Ex-488 nm (+/-9)/Em-518 nm (+/-9)	8441 MFI's

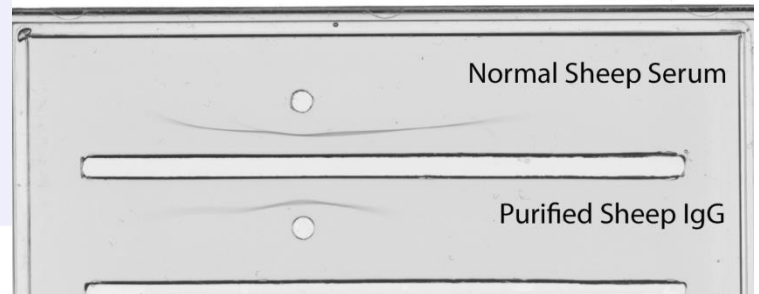
### SDS-PAGE




- 1) DkxSh-003-D, Lot # 20-135-100416
- 2) Mol Weight Standard

### Immunoelectrophoresis (IEP)

IEP Image for Donkey anti-Sheep IgG (H&L), Affinity Pure  
Part # DkxSh-003-D Lot # 20-135-100416



Date: October 16, 2018

Signature:   
Quality Control