

Certificate of Analysis

Product: Chicken anti-Rabbit IgG (H&L), Affinity Pure

Part Number: CkxRb-003-D
Lot Number: 70-12-031819
Concentration: 2.50 mg/ml ($E^{1\%}$ at 280 nm = 13.2)
Amount: 1.0 mg
Form: Clear, colorless liquid, 0.2 μ filtered
Purification: Affinity purified using solid phase Rabbit IgG
Purity: $\geq 95\%$ based on SDS-PAGE
Host: Chicken
Immunogen: Purified Rabbit IgG, whole molecule
Buffer: 10 mM Sodium Phosphate, 0.15 M Sodium Chloride, pH 7.2
Preservative: 0.05 % (w/v) Sodium Azide
Storage: 2-8 °C
Expiration Date: March 18, 2022

Specificity: Based on IEP, this antibody reacts with:

- heavy (γ) chains on Rabbit IgG
- light chains on all Rabbit immunoglobulins

Cross Reactivity: Based on IEP, no reactivity is observed to:

- non-immunoglobulin Rabbit serum proteins

Country of Origin: Ig fraction was prepared using eggs obtained from healthy hens of US origin.

Note: This product was produced by dilution of Part # CkxRb-003-D, Lot # 35-67-012915.

Applications: The optimal working dilution should be determined by the investigator.
Suitable for use in: ELISA, IP, IDA, WB, IHC, Absorption

Disclaimer: *For in vitro Laboratory Use Only.* Not for diagnostic or therapeutic use. Not for human or animal consumption. The proper selection and use of our products is the sole responsibility of the end user, and therefore we can offer no guarantee to a specific experimental outcome. Suggested applications of our products are not recommendations to use our products in violation of any patent or as a license under any patent of ImmunoReagents, Inc.

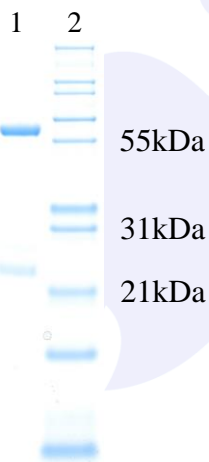
Product may not be resold or modified for resale without prior written approval of ImmunoReagents, Inc.

Testing Results

Product: Chicken anti-Rabbit IgG (H&L), Affinity Pure
Part Number: CkxRb-003-D
Lot Number: 70-12-031819

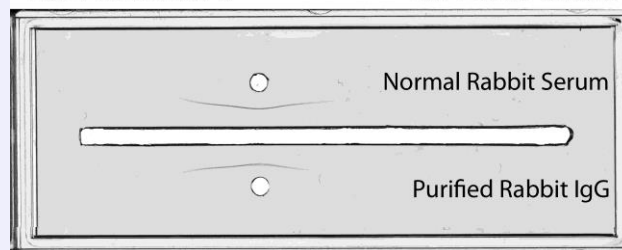
<u>TESTS</u>	<u>SPECIFICATIONS</u>	<u>RESULTS</u>
Appearance:	Clear and Colorless	PASS
Purity:	Two predominant bands at 60 and 24 kDa based on SDS PAGE	PASS
Specificity:	Based on IEP, this antibody has precipitin bands with: <ul style="list-style-type: none">heavy (γ) chains on Rabbit IgGlight chains on all Rabbit immunoglobulins	PASS PASS
Cross Reactivity:	Based on IEP, no precipitin bands are observed to: <ul style="list-style-type: none">non-immunoglobulin Rabbit serum proteins	PASS

SDS PAGE



Immunoelectrophoresis (IEP)

IEP Image for Chicken anti-Rabbit IgG (H&L), Affinity Pure
Part # CkxRb-003-D Lot # 35-67-012915



- 1) CkxRb-003-D, Lot # 35-67-012915
- 2) Mol Weight Standard

Date: March 22, 2019

Signature: _____

Quality Control