

Certificate of Analysis

Product: Rabbit anti-Llama IgG (H&L), Affinity Pure

Part Number: RbxLI-003-D
Lot Number: 68-19-113018
Concentration: 2.50 mg/ml ($E^{1\%}$ at 280 nm = 13.0)
Amount: 1.0 mg
Form: Clear, colorless liquid, 0.2 μ m filtered
Purification: Affinity purified using solid phase Llama IgG
Purity: $\geq 95\%$ based on SDS-PAGE
Host: Rabbit
Immunogen: Purified Llama IgG, whole molecule
Buffer: 10 mM Sodium Phosphate, 0.15 M Sodium Chloride, pH 7.2
Preservative: 0.05 % (w/v) Sodium Azide
Storage: 2-8 °C
Expiration Date: November 30, 2021

Specificity: Based on IEP, this antibody reacts with:

- heavy (γ) chains on Llama IgG
- light chains on all Llama immunoglobulins

Cross Reactivity: Based on IEP, no reactivity is observed to:

- non-immunoglobulin Llama serum proteins

Country of Origin: Rabbit serum was obtained from healthy animals of US origin and under the care of a registered veterinarian.

Note: This product was produced by the dilution of Part # RbxLI-003-D, lot # 27-169-011614.

Applications: Suitable for use in: ELISA, WB, IHC, ICC, CL, FACS, IM, IF
The optimal working dilution should be determined by the investigator.

Disclaimer: *For in vitro Laboratory Use Only.* Not for diagnostic or therapeutic use. Not for human or animal consumption. The proper selection and use of our products is the sole responsibility of the end user, and therefore we can offer no guarantee to a specific experimental outcome. Suggested applications of our products are not recommendations to use our products in violation of any patent or as a license under any patent of ImmunoReagents, Inc.

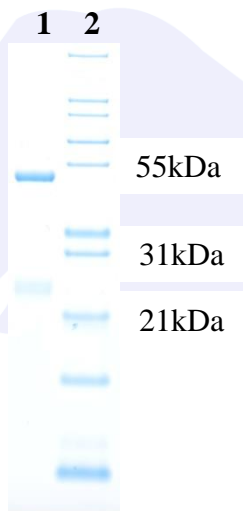
Product may not be resold or modified for resale without prior written approval of ImmunoReagents, Inc.

Testing Results

PRODUCT: Rabbit anti-Llama IgG (H&L), Affinity Pure
PART NUMBER: RbxLI-003-D
LOT NUMBER: 68-19-113018

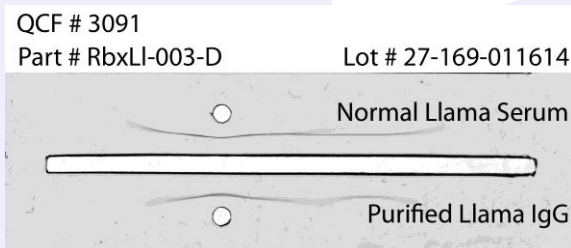
<u>TESTS</u>	<u>SPECIFICATIONS</u>	<u>RESULTS</u>
Appearance:	Clear and Colorless	PASS
Purity:	Two predominant bands at 50 and 24 kDa based on SDS PAGE	PASS
Specificity:	Based on IEP, this antibody has precipitin bands with: <ul style="list-style-type: none">heavy (γ) chains on Llama IgGlight chains on all Llama immunoglobulins	PASS PASS
Cross Reactivity:	Based on IEP, this antibody does not have precipitin bands to: <ul style="list-style-type: none">non-immunoglobulin Llama serum proteins	PASS

SDS PAGE



- 1) RbxLI-003-D, Lot # 27-169-011614
- 2) Mol Weight Standard

Immunoelectrophoresis (IEP)



Date: December 7, 2018

Signature: _____

Quality Control