

---

---

## Certificate of Analysis

Product: Goat anti-Human IgG Fc, F(ab)'2 Fragment, HRP Conjugate

Part Number: GtxHu-004-JHRPX

Lot Number: 70-87-102419

Amount: 0.5 mg of lyophilized antibody (E<sup>1%</sup> at 280 nm = 13.0)  
(Product has been overfilled to ensure maximum recovery)

Label: Horseradish Peroxidase (HRP)

Form: Lyophilized

Purification: Affinity purified using solid phase Human IgG. F(ab)'2 fragment was prepared by pepsin digestion.

Purity: Affinity purified antibody is ≥ 90 % based on SDS-PAGE. Small amounts of intact IgG may be present.

Host: Goat

Immunogen: Purified Human IgG Fc

Buffer: 10 mM Sodium Phosphate, 0.15 M Sodium Chloride, pH 7.2, 1 % (w/v) BSA, Protease/IgG free

Preservative: 0.1 % (v/v) ProClin 150 – *Use of Sodium Azide will inhibit enzyme activity of horseradish peroxidase*

Reconstitution: Rehydrate with 0.55 ml of deionized water. Allow reconstituted product to stand at room temperature for at least 30 minutes prior to dilution. If necessary, centrifuge to remove any particulates. Prepare fresh working dilution daily.

Storage: Store lyophilized material at 2-8 °C. For storage at -20 °C after reconstitution, dilute with an equal volume of glycerol to prevent loss of enzymatic activity. Prepare working dilution prior to use and then discard.

Shelf Life: 1 year from date of receipt

Specificity: Based on IEP, this antibody reacts with:

- heavy (γ) chains on Human IgG

Cross Reactivity: Based on IEP, no reactivity is observed to:

- non-immunoglobulin Human serum proteins
- light chains on all Human immunoglobulins
- Human IgG F(ab)'2 fragment
- serum proteins from Bovine, Horse, Mouse, or Rabbit

Country of Origin: Goat antiserum was obtained from healthy animals of US origin and under the care of a registered veterinarian.

Note: This conjugate was prepared using Part # GtxHu-004-J, Lot # 36-157-060616

Applications: This conjugate is suitable for use in: ELISA, WB, IHC, CL. The optimal working dilution should be determined by the investigator. Suggested starting dilution(s):

- 1:500-1:5,000 for Immunohistochemistry
- 1:200-1:5,000 for ELISA/Western blot

Disclaimer: *For in vitro Laboratory Use Only.* Not for diagnostic or therapeutic use. Not for human or animal consumption. The proper selection and use of our products is the sole responsibility of the end user, and therefore we can offer no guarantee to a specific experimental outcome. Suggested applications of our products are not recommendations to use our products in violation of any patent or as a license under any patent of ImmunoReagents, Inc.

**Product may not be resold or modified for resale without prior written approval of ImmunoReagents, Inc.**

## Testing Results

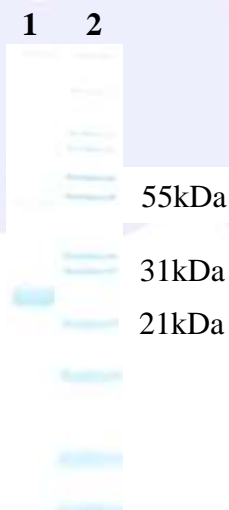
**PRODUCT:** Goat anti-Human IgG Fc, F(ab)'2 Fragment, HRP Conjugate

**PART NUMBER:** GtxHu-004-JHRPX

**LOT NUMBER:** 70-87-102419

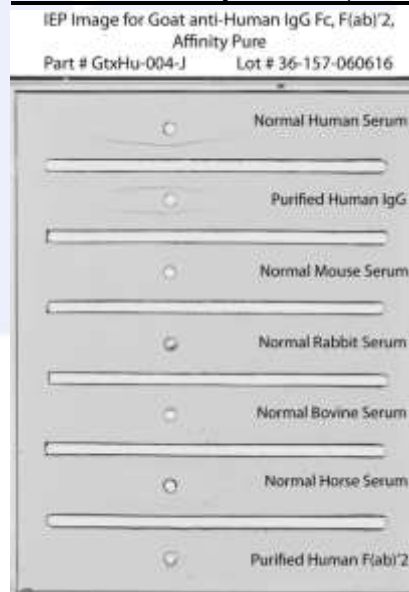
| <u>TESTS</u>     | <u>SPECIFICATIONS</u>  | <u>RESULTS</u>               |
|------------------|--|------------------------------|
| Appearance:      | Reddish powder   | PASS                         |
| Purity:          | One predominant band at 24 based on SDS-PAGE   | PASS                         |
| Specificity      | Based on IEP, this antibody has precipitin bands with: <ul style="list-style-type: none"> <li>heavy (<math>\gamma</math>) chains on Human IgG</li> </ul>   | PASS                         |
| Cross Reactivity | Based on IEP, this antibody does not have precipitin bands to: <ul style="list-style-type: none"> <li>non-immunoglobulin Human serum proteins</li> <li>light chains on all Human immunoglobulins</li> <li>Human IgG F(ab)'2 fragment</li> <li>serum proteins from Bovine, Horse, Mouse, or Rabbit</li> </ul> | PASS<br>PASS<br>PASS<br>PASS |
| ELISA:           | Dilution giving $A^{450}$ reading of $\geq 1.0$ when tested against Human IgG (H&L) coated at 2 $\mu\text{g/ml}$   | 1: 90,000                    |

### SDS-PAGE



- 1) GtxHu-004-J, Lot # 36-157-060616
- 2) Mol Weight Standard

### Immunoelectrophoresis (IEP)



Date: November 6, 2019

Signature: 