
Certificate of Analysis

Product:	Donkey anti-Sheep IgG (H&L), Affinity Pure
Part Number:	DkxSh-003-E
Lot Number:	35-71-021815
Concentration:	10.7 mg/ml (E ^{1%} at 280 nm = 13.0)
Amount:	2.0 mg
Form:	Clear, colorless liquid, 0.2 µm filtered
Purification:	Affinity purified using solid phase Sheep IgG
Purity:	≥ 95 % based on SDS-PAGE
Immunogen:	Purified Sheep IgG, whole molecule
Buffer:	10 mM Sodium Phosphate, 0.15 M Sodium Chloride, pH 7.2
Preservative:	0.05 % (w/v) Sodium Azide
Storage:	2 - 8 °C
Expiration Date:	December 19, 2021
Specificity:	Based on IEP, this antibody reacts with: <ul style="list-style-type: none">• heavy (γ) chains on Sheep IgG• light chains on all Sheep immunoglobulins
Cross Reactivity:	Based on IEP, no reactivity is observed to: <ul style="list-style-type: none">• non-immunoglobulin Sheep serum proteins• Serum proteins or IgG from Human or Rabbit
Country of Origin:	Donkey serum was obtained from healthy animals of US origin and under the care of a registered veterinarian.
Applications:	Suitable for use in: ELISA, WB, IHC, ICC, CL, FACS, IM, IF The optimal working dilution should be determined by the investigator.
Disclaimer:	<i>For in vitro Laboratory Use Only.</i> Not for diagnostic or therapeutic use. Not for human or animal consumption. The proper selection and use of our products is the sole responsibility of the end user, and therefore we can offer no guarantee to a specific experimental outcome. Suggested applications of our products are not recommendations to use our products in violation of any patent or as a license under any patent of ImmunoReagents, Inc.

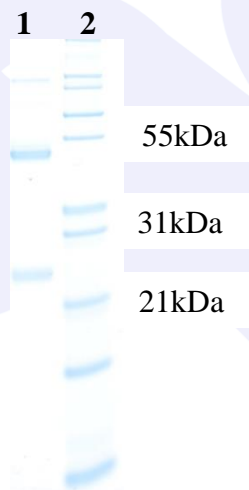
Product may not be resold or modified for resale without prior written approval of ImmunoReagents, Inc.

Testing Results

PRODUCT: Donkey anti-Sheep IgG (H&L), Affinity Pure
PART NUMBER: DkxSh-003-E
LOT NUMBER: 35-71-021815

<u>TESTS</u>	<u>SPECIFICATIONS</u>	<u>RESULTS</u>
Appearance:	Clear, colorless liquid	PASS
Purity:	Two predominant bands at 50 and 24 kDa based on SDS-PAGE	PASS
Specificity:	Based on IEP, this antibody has precipitin bands with: <ul style="list-style-type: none">heavy (γ) chains on Sheep IgGlight chains on all Sheep immunoglobulins	PASS PASS
Cross Reactivity:	Based on IEP, this antibody does not have precipitin bands to: <ul style="list-style-type: none">non-immunoglobulin Sheep serum proteinsSerum proteins or IgG from Human or Rabbit	PASS PASS

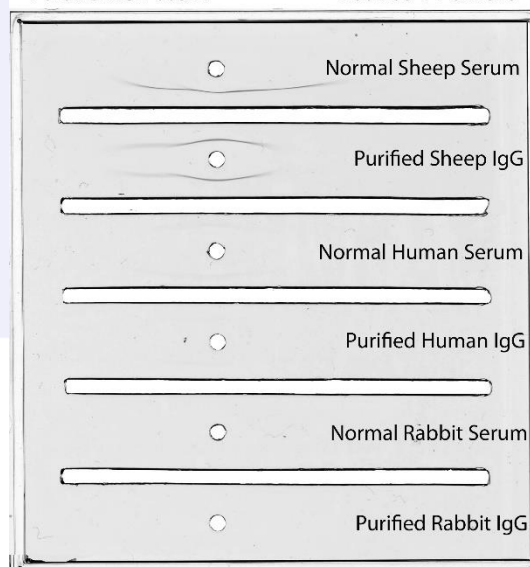
SDS-PAGE



- 1) DkxSh-003-E, Lot # 35-71-021815
- 2) Mol Weight Standard

Immunoelectrophoresis (IEP)

IEP Image for Donkey anti-Sheep IgG (H&L), Affinity Pure
Part # DkxSh-003-E Lot # 35-71-021815



Date: December 19, 2019

Signature: _____



Quality Control

