

---

---

## Certificate of Analysis

Product: Goat anti-Human IgE ( $\epsilon$  chain), Affinity Pure  
Part Number: GtxHu-002-E  
Lot Number: 80-103-060721  
Concentration: 10.0 mg/ml ( $E^{1\%}$  at 280 nm = 13.0)  
Amount: 1.0 mg  
Form: Clear, colorless liquid, 0.2  $\mu$ m filtered  
Purification: Affinity purified using solid phase Human IgE  
Purity:  $\geq 95\%$  based on SDS-PAGE  
Host: Goat  
Immunogen: Purified Human IgE,  $\epsilon$  chain  
Buffer: 10 mM Sodium Phosphate, 0.15 M Sodium Chloride, pH 7.2  
Preservative: 0.05 % (w/v) Sodium Azide  
Storage: 2-8 °C  
Expiration Date: June 7, 2024

Specificity: Based on IEP, this antibody reacts with:

- heavy ( $\epsilon$ ) chains on Human IgE

Cross Reactivity: Based on IEP, no reactivity is observed to:

- light chains on all Human immunoglobulins
- non-immunoglobulin Human serum proteins
- serum proteins from Bovine, Mouse or Rabbit

Country of Origin: Goat serum was obtained from healthy animals of US origin and under the care of a registered veterinarian.

Applications: This antibody has been absorbed to remove cross reactivity with Bovine, Mouse, or Rabbit serum proteins. The optimal working dilution should be determined by the investigator.  
Suitable for use in: ELISA, IP, IDA, WB, IHC, Absorption

Disclaimer: *For in vitro Laboratory Use Only.* Not for diagnostic or therapeutic use. Not for Human or animal consumption. The proper selection and use of our products is the sole responsibility of the end user, and therefore we can offer no guarantee to a specific experimental outcome. Suggested applications of our products are not recommendations to use our products in violation of any patent or as a license under any patent of ImmunoReagents, Inc.

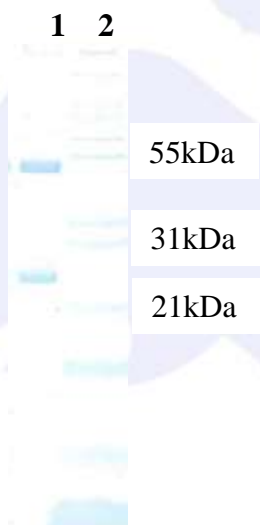
**Product may not be resold or modified for resale without prior written approval of ImmunoReagents, Inc.**

## Testing Results

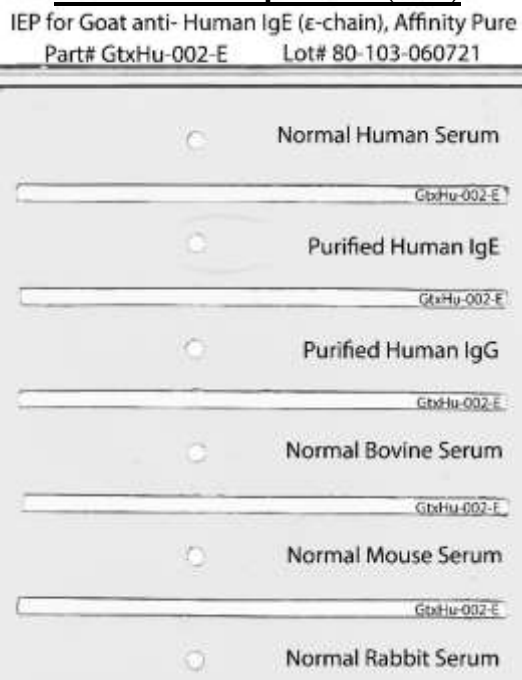
**PRODUCT:** Goat anti-Human IgE (ε chain), Affinity Pure  
**PART NUMBER:** GtxHu-002-E  
**LOT NUMBER:** 80-103-060721

<u>TESTS</u>	<u>SPECIFICATIONS</u>	<u>RESULTS</u>
Appearance:	Clear and Colorless	PASS
Purity:	Two predominant bands at 50 and 24 kDa based on SDS PAGE	PASS
Specificity:	Based on IEP, this antibody has precipitin bands with: <ul style="list-style-type: none"> <li>• heavy (ε) chains on Human IgE</li> </ul>	PASS
Cross Reactivity:	Based on IEP, this antibody does not have precipitin bands to: <ul style="list-style-type: none"> <li>• light chains on all Human immunoglobulins</li> <li>• non-immunoglobulin Human serum proteins</li> <li>• serum proteins from Bovine, Mouse or Rabbit</li> </ul>	PASS PASS PASS

**SDS PAGE**



**Immuno-electrophoresis (IEP)**



- 1) GtxHu-002-E Lot # 80-103-060721
- 2) Mol Weight Standard

Date: June 10, 2021

Signature: \_\_\_\_\_  
Quality Control