

## Certificate of Analysis

Product:	Goat anti-Rabbit IgG (H&L), Affinity Pure
Part Number:	GtxRb-003-E
Lot Number	62-158-111318
Concentration:	10.0 mg/ml (E <sup>1%</sup> at 280 nm = 14.0)
Amount:	2.0 mg
Form:	Clear, colorless liquid, 0.2 µm filtered
Purification:	Affinity purified using solid phase Rabbit IgG
Purity:	> 95% based on SDS-PAGE
Host:	Goat
Immunogen:	Purified Rabbit IgG, whole molecule
Buffer:	10 mM Sodium Phosphate, 0.15 M Sodium Chloride, pH 7.2
Preservative:	0.05 % (w/v) Sodium Azide
Storage:	2-8 ° C
Expiration Date:	November 13, 2021
Specificity:	Based on IEP, this antibody reacts with: <ul style="list-style-type: none"><li>• heavy (γ) chains on Rabbit IgG</li><li>• light chains on all Rabbit immunoglobulins</li></ul>
Cross Reactivity:	Based on IEP, no reactivity is observed to: <ul style="list-style-type: none"><li>• non-immunoglobulin Rabbit serum proteins</li><li>• serum proteins from Bovine, Human, or Mouse</li><li>• IgG from Human or Mouse</li></ul>
Country of Origin:	Goat serum was obtained from healthy animals of US origin and under the care of a registered veterinarian.
Applications:	The optimal working dilution should be determined by the investigator. Suitable for use in: ELISA, IP, IDA, WB, IHC
Disclaimer:	<i>For in vitro Laboratory Use Only.</i> Not for diagnostic or therapeutic use. Not for Human or animal consumption. The proper selection and use of our products is the sole responsibility of the end user, and therefore we can offer no guarantee to a specific experimental outcome. Suggested applications of our products are not recommendations to use our products in violation of any patent or as a license under any patent of ImmunoReagents, Inc.  <b>Product may not be resold or modified for resale without prior written approval of ImmunoReagents, Inc.</b>

---

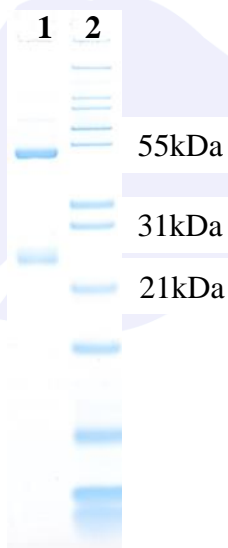
---

## Testing Results

**PRODUCT:** Goat anti-Rabbit IgG (H&L), Affinity Pure**PART NUMBER:** GtxRb-003-E**LOT NUMBER:** 62-158-111318

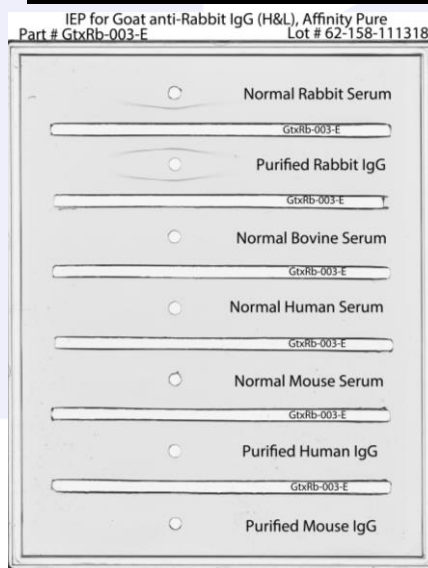
<u>TESTS</u>	<u>SPECIFICATIONS</u>	<u>RESULTS</u>
Appearance:	Clear and colorless	PASS
Purity:	Two predominant bands at 50 and 24 kDa based on SDS PAGE	PASS
Specificity:	Based on IEP, this antibody has precipitin bands with: <ul style="list-style-type: none"><li>heavy (<math>\gamma</math>) chains on Rabbit IgG</li><li>light chains on all Rabbit immunoglobulins</li></ul>	PASS PASS
Cross Reactivity:	Based on IEP, no precipitin bands are observed to: <ul style="list-style-type: none"><li>non-immunoglobulin Rabbit serum proteins</li><li>serum proteins from Bovine, Human, or Mouse</li><li>IgG from Human or Mouse</li></ul>	PASS PASS PASS

### SDS PAGE




- 1) GtxRb-003-E, Lot # 62-158-111318
- 2) Mol Weight Standard

### Immunoelectrophoresis (IEP)



Date: November 20, 2018

Signature: 

Quality Control