
Certificate of Analysis

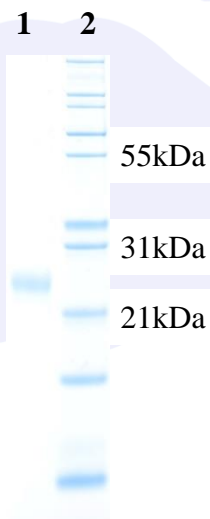
Product:	Rabbit anti-Human IgM (μ chain), F(ab)' ₂ Fragment, Affinity Pure
Part Number:	RbxHu-006-J
Lot Number:	41-58-011415
Concentration:	2.43 mg/ml (E ^{1%} at 280 nm = 13.0)
Amount:	1.0 mg
Form:	Clear, colorless liquid, 0.2 μ m filtered
Purification:	Affinity purified using solid phase Human IgM. F(ab)' ₂ fragment was prepared by pepsin digestion.
Purity:	\geq 90 % based on SDS-PAGE. Small amounts of intact IgG may be present.
Host:	Rabbit
Immunogen:	Purified Human IgM, μ chain
Buffer:	10 mM Sodium Phosphate, 0.15 M Sodium Chloride, pH 7.2
Preservative:	0.05 % (w/v) Sodium Azide
Storage:	2 - 8 °C
Expiration Date:	February 18, 2022
Specificity:	Based on IEP, this antibody reacts with: <ul style="list-style-type: none">• heavy (μ) chains on Human IgM
Cross Reactivity:	Based on IEP, no reactivity is observed to: <ul style="list-style-type: none">• light chains on all Human immunoglobulins• non-immunoglobulin Human serum proteins• Mouse IgG or serum proteins
Country of Origin:	Rabbit serum was obtained from healthy animals of US origin and under the care of a registered veterinarian.
Applications:	Suitable for use in: ELISA, WB, IHC, ICC, CL, FACS, IM, IF The optimal working dilution should be determined by the investigator.
Disclaimer:	<i>For in vitro Laboratory Use Only.</i> Not for diagnostic or therapeutic use. Not for human or animal consumption. The proper selection and use of our products is the sole responsibility of the end user, and therefore we can offer no guarantee to a specific experimental outcome. Suggested applications of our products are not recommendations to use our products in violation of any patent or as a license under any patent of ImmunoReagents, Inc. Product may not be resold or modified for resale without prior written approval of ImmunoReagents, Inc.

Testing Results

PRODUCT: Rabbit anti-Human IgM (μ chain), F(ab)[']2 Fragment, Affinity Pure
PART NUMBER: RbxHu-006-J
LOT NUMBER: 41-58-011415

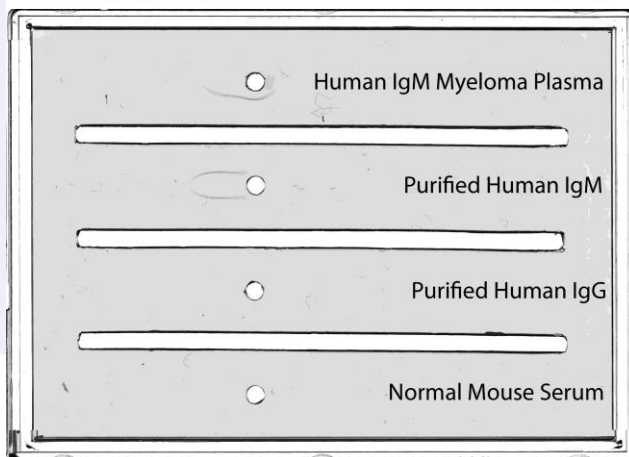
<u>TESTS</u>	<u>SPECIFICATIONS</u>	<u>RESULTS</u>
Appearance:	Clear, colorless liquid	PASS
Purity:	One predominant band at 24 kDa based on SDS-PAGE	PASS
Specificity:	Based on IEP, this antibody has precipitin bands with: <ul style="list-style-type: none"> • heavy (μ) chains on Human IgM 	PASS
Cross Reactivity:	Based on IEP, this antibody does not have precipitin bands to: <ul style="list-style-type: none"> • light chains on all Human immunoglobulins • non-immunoglobulin Human serum proteins • Mouse IgG or serum proteins 	PASS

SDS-PAGE



Immunoelectrophoresis (IEP)

Rabbit anti-Human IgM (μ -chain), F(ab)[']2 Fragment
 Part # RbxHu-006-J Lot # 41-58-011415



- 1) RbxHu-006-J, Lot # 41-58-011415
- 2) Mol Weight Standard

Date: February 18, 2020

Signature: _____

Quality Control