

---

---

## Certificate of Analysis

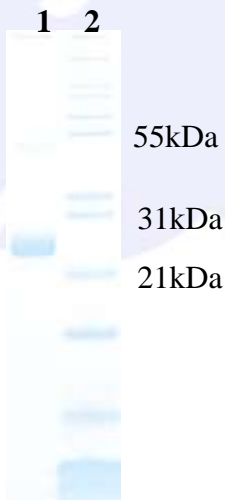
Product:	Goat anti-Human IgG (H&L), F(ab)'2 Fragment, FITC Conjugate
Part Number:	GtxHu-003-JFITC
Lot Number:	80-97-052521
Amount:	0.5 mg of antibody at 1.50 mg/ml ( $E^{1\%}$ at 280 nm = 13.0)
Form:	Clear, fluorescent yellow liquid
Fluorophore:	Fluorescein-5-isothiocyanate (FITC) Ex = 494 nm; Em = 518 nm
Fluor/Protein Ratio:	8.9 Moles FITC per Mole Antibody
Form:	Clear, fluorescent yellow liquid
Purification:	Antibody was affinity purified using solid phase Human IgG
Purity:	Affinity purified antibody is $\geq 90\%$ based on SDS-PAGE. Small amounts of intact IgG may be present.
Host:	Goat
Immunogen:	Purified Human IgG, whole molecule
Buffer:	10 mM Sodium Phosphate, 0.15 M Sodium Chloride, pH 7.2, 1 % (w/v) BSA, Protease/IgG free
Preservative:	0.05 % (w/v) Sodium Azide
Storage:	Store undiluted liquid at 2-8 °C. Prepare working dilution prior to use and then discard.
Shelf Life:	1 year from date of receipt
Specificity:	Based on IEP, this antibody reacts with: <ul style="list-style-type: none"><li>• heavy (<math>\gamma</math>) chains on Human IgG</li><li>• light chains on Human immunoglobulins</li></ul>
Cross Reactivity:	Based on IEP, no reactivity is observed to: <ul style="list-style-type: none"><li>• non-immunoglobulin Human serum proteins</li><li>• serum proteins from Bovine, Mouse, or Rabbit</li></ul>
Country of Origin:	Goat antiserum was obtained from healthy animals of US origin and under the care of a registered veterinarian.
Note:	This conjugate was prepared using Part # GtxHu-003-J, Lot #80-87-051021
Applications:	This conjugate is suitable for immunomicroscopy and flow cytometry. The optimal working dilution should be determined by the investigator. Suggested starting dilution(s): <ul style="list-style-type: none"><li>• 1:20 – 1:2,000 for Immunohistochemistry</li><li>• 1:50 – 1:5,000 for Immunocytochemistry</li></ul>
Disclaimer:	<i>For in vitro Laboratory Use Only.</i> Not for diagnostic or therapeutic use. Not for human or animal consumption. The proper selection and use of our products is the sole responsibility of the end user, and therefore we can offer no guarantee to a specific experimental outcome. Suggested applications of our products are not recommendations to use our products in violation of any patent or as a license under any patent of ImmunoReagents, Inc. <b>Product may not be resold or modified for resale without prior written approval of ImmunoReagents, Inc.</b>

## Testing Results

**PRODUCT:** Goat anti-Human IgG (H&L), F(ab)'2 Fragment, FITC Conjugate  
**PART NUMBER:** GtxHu-003-JFITC  
**LOT NUMBER:** 80-97-052521

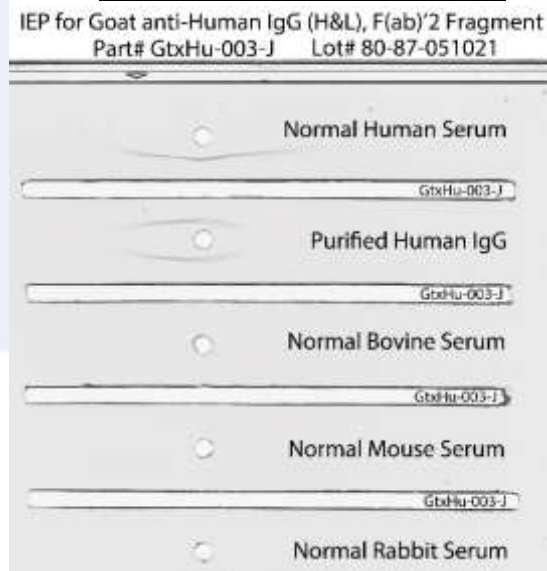
<u>TESTS</u>	<u>SPECIFICATIONS</u>	<u>RESULTS</u>
Appearance	Clear, fluorescent yellow liquid	PASS
Purity	One predominant band at 24 kDa based on SDS-PAGE	PASS
Specificity	Based on IEP, this antibody has a precipitin band against: <ul style="list-style-type: none"> <li>• heavy (<math>\gamma</math>) chains on Human IgG</li> <li>• light chains on Human immunoglobulins</li> </ul>	PASS PASS
Cross Reactivity	Based on IEP, no reactivity is observed to: <ul style="list-style-type: none"> <li>• non-immunoglobulin Human serum proteins</li> <li>• serum proteins from Bovine, Mouse, or Rabbit</li> </ul>	PASS PASS
FLISA:	Mean fluorescent value of 8 $\mu$ g/ml of FITC conjugate when tested against normal Human IgG coated at 4 $\mu$ g/ml	3276 MFI's

**SDS-PAGE**



- 1) GtxHu-003-J, Lot # 80-87-051021
- 2) Mol Weight Standard

**Immunoelectrophoresis (IEP)**



Date: May 27, 2021

Signature: \_\_\_\_\_  
Quality Control