
Certificate of Analysis

Product:	Goat anti-Human IgM (μ chain), ALP Conjugate
Part Number:	GtxHu-006-EALP
Lot Number:	86-14-090320
Amount:	1.0 mg antibody at 1.50 mg/ml ($E^{1\%}$ at 280 nm = 13.0)
Label:	Alkaline Phosphatase (ALP)
Form:	Clear, colorless liquid
Purification:	Affinity purified using solid phase Human IgM
Purity:	Affinity purified antibody is $\geq 95\%$ based on SDS-PAGE
Host:	Goat
Immunogen:	Purified Human IgM
Buffer:	30 mM Triethanolamine, pH 7.2, 5 mM Magnesium Chloride, 0.1 mM Zinc Chloride, 1 % (w/v) BSA, Protease/IgG free
Preservative:	0.05 % (w/v) Sodium Azide
Storage:	Store undiluted liquid at 2 - 8 °C. For storage at - 20 °C dilute with an equal volume of glycerol to prevent loss of enzymatic activity. Prepare working dilution prior to use and then discard.
Shelf Life:	1 year from date of receipt
Specificity:	Based on IEP, this antibody reacts with: <ul style="list-style-type: none">• heavy (μ) chains on Human IgM
Cross Reactivity:	Based on IEP, no reactivity is observed to: <ul style="list-style-type: none">• light chains on all Human immunoglobulins• non-immunoglobulin Human serum proteins• Human IgG or IgA
Country of Origin:	Goat antiserum was obtained from healthy animals of US origin and under the care of a registered veterinarian.
Note:	This conjugate was prepared using Part # GtxHu-006-E, Lot #61-178-062520.
Applications:	This conjugate is suitable for use in: ELISA, WB, IHC, ICC, CL. The optimal working dilution should be determined by the investigator. Suggested starting dilution(s): <ul style="list-style-type: none">• 1:500-1:2,000 for Immunohistochemistry• 1:500-1:8,000 for ELISA/Western blot
Disclaimer:	<i>For in vitro Laboratory Use Only.</i> Not for diagnostic or therapeutic use. Not for human or animal consumption. The proper selection and use of our products is the sole responsibility of the end user, and therefore we can offer no guarantee to a specific experimental outcome. Suggested applications of our products are not recommendations to use our products in violation of any patent or as a license under any patent of ImmunoReagents, Inc.

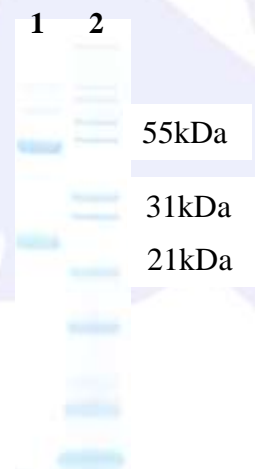
Product may not be resold or modified for resale without prior written approval of ImmunoReagents, Inc.

Testing Results

PRODUCT: Goat anti-Human IgM (μ chain), ALP Conjugate
PART NUMBER: GtxHu-006-EALP
LOT NUMBER: 86-14-090320

<u>TESTS</u>	<u>SPECIFICATIONS</u>	<u>RESULTS</u>
Appearance:	Clear, colorless liquid	PASS
Purity:	Two predominant bands at 50 and 24 kDa based on SDS-PAGE	PASS
Specificity:	Based on IEP, this antibody has precipitin bands with: <ul style="list-style-type: none"> • heavy (μ) chains on Human IgM 	PASS
Cross Reactivity:	Based on IEP, this antibody does not have precipitin bands to: <ul style="list-style-type: none"> • light chains on all Human immunoglobulins • non-immunoglobulin Human serum proteins • Human IgG or IgA 	PASS PASS PASS
ELISA:	Dilution giving A^{405} reading of ≥ 1.0 when tested against Human IgM coated at 2 $\mu\text{g/ml}$	1:14,480

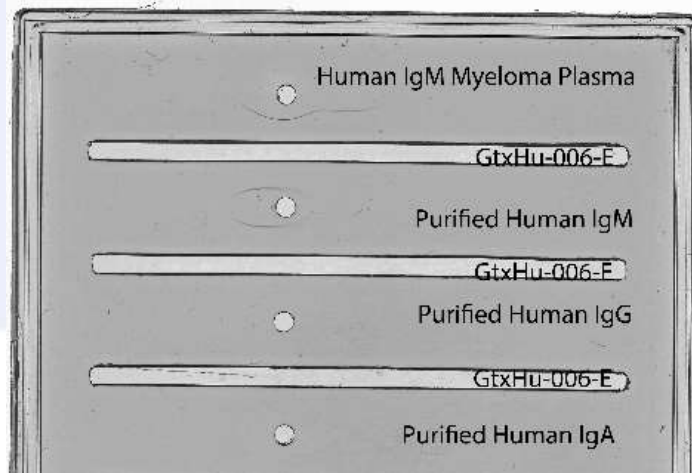
SDS-PAGE



- 1) GtxHu-006-E, Lot # 61-178-062520
- 2) Mol Weight Standard

Immunoelectrophoresis (IEP)

IEP for Goat anti-Human IgM (μ -chain), Affinity Pure
 Part #: GtxHu-006-E Lot #: 61-178-062520



Date: September 10, 2020

Signature: _____
Quality Control