

Certificate of Analysis

Product: Rabbit anti-Llama IgG (H&L), FITC Conjugate

Part Number: RbxLI-003-DFITC

Lot Number: 58-147-062718

Amount: 1.0 mg of antibody at 1.50 mg/ml ($E^{1\%}$ at 280 nm = 13.0)

Fluorophore: Fluorescein-5-isothiocyanate
Amax = 494 nm; Emax = 518 nm

Fluor/Protein Ratio: 4.7 Moles FITC per Mole Antibody

Form: Clear, fluorescent yellow liquid

Purification: Antibody was affinity purified using solid phase Llama IgG

Purity: Affinity purified antibody is $\geq 95\%$ based on SDS-PAGE

Host: Rabbit

Immunogen: Purified Llama IgG, whole molecule

Buffer: 10 mM Sodium Phosphate, 0.15 M Sodium Chloride, pH 7.2,
1 % (w/v) BSA, Protease/IgG free

Preservative: 0.05 % (w/v) Sodium Azide

Storage: 2 - 8 °C

Shelf Life: 1 year from date of receipt

Specificity: Based on IEP, this antibody reacts with:

- heavy (γ) chains on Llama IgG
- light chains on all Llama immunoglobulins

Cross Reactivity: Based on IEP, no reactivity is observed to:

- non-immunoglobulin Llama serum proteins

Country of Origin: Rabbit antiserum was obtained from animals of US origin and under the care of a registered veterinarian.

Note: This conjugate was prepared using Part # RbxLI-003-D, Lot # 27-169-011614.

Applications: This conjugate is suitable for use in: FLISA, IF, IM, IHC, FACS. The optimal working dilution should be determined by the investigator. Suggested starting dilution(s):

- 1:20 – 1:2,000 for Immunohistochemistry
- 1:50 – 1:5,000 for Immunocytochemistry

Disclaimer: *For in vitro Laboratory Use Only.* Not for diagnostic or therapeutic use. Not for human or animal consumption. The proper selection and use of our products is the sole responsibility of the end user, and therefore we can offer no guarantee to a specific experimental outcome. Suggested applications of our products are not recommendations to use our products in violation of any patent or as a license under any patent of ImmunoReagents, Inc.

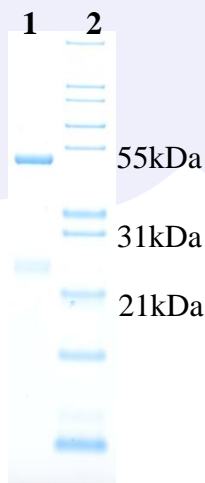
Product may not be resold or modified for resale without prior written approval of ImmunoReagents, Inc.

Testing Results

PRODUCT: Rabbit anti-Llama IgG (H&L), FITC Conjugate
PART NUMBER: RbxLI-003-DFITC
LOT NUMBER: 58-146-062718

<u>TESTS</u>	<u>SPECIFICATIONS</u>	<u>RESULTS</u>
Appearance:	Clear, fluorescent yellow liquid	PASS
Purity:	Two predominant bands at 50 and 24 kDa based on SDS-PAGE	PASS
Specificity:	Based on IEP, this antibody has precipitin bands with: <ul style="list-style-type: none">heavy (γ) chains on Llama IgGlight chains on all Llama immunoglobulins	PASS PASS
Cross Reactivity:	Based on IEP, no precipitin bands are observed to: <ul style="list-style-type: none">non-immunoglobulin Llama serum proteins	PASS
FLISA:	Mean fluorescent value of 8 $\mu\text{g/ml}$ of FITC conjugate when tested against normal Llama IgG coated at 4 $\mu\text{g/ml}$	11906 MFI's
F.I.T.:	Mean fluorescent intensity of a 1:1000 dilution at Ex-488 nm (+/-9)/Em-518 nm (+/-9)	2956 MFI's

SDS-PAGE



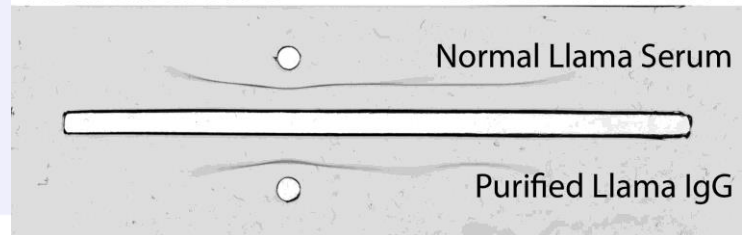
1) RbxLI-003-D, Lot # 27-169-011614
2) Mol Weight Standard

Immunoelectrophoresis (IEP)

QCF # 3091


Part # RbxLI-003-D

Lot # 27-169-011614



Date: July 2, 2018

Signature: _____


Quality Control