

---

---

## Certificate of Analysis

Product:	Goat anti-Human Kappa ( $\kappa$ ) Light Chain, HRP Conjugate
Part Number:	GtxHu-084-DHRPX
Lot Number:	66-114-111720
Amount:	0.5 mg of lyophilized antibody (E <sup>1%</sup> at 280 nm = 13.0) (Product has been overfilled to ensure maximum recovery)
Label:	Horseradish Peroxidase (HRP)
Form:	Lyophilized
Purification:	Affinity purified using solid phase Human Kappa ( $\kappa$ ) Light Chain
Purity:	Affinity purified antibody is $\geq 95$ % based on SDS-PAGE
Host:	Goat
Immunogen:	Purified Human Kappa ( $\kappa$ ) Light Chain
Buffer:	10 mM Sodium Phosphate, 0.15 M Sodium Chloride, pH 7.2, 1 % (w/v) BSA, Protease/IgG free
Preservative:	0.1 % (v/v) ProClin 150 – <i>Use of Sodium Azide will inhibit enzyme activity of horseradish peroxidase</i>
Reconstitution:	Rehydrate with 0.55 ml of deionized water. Allow reconstituted product to stand at room temperature for at least 30 minutes prior to dilution. If necessary, centrifuge to remove any particulates. Prepare fresh working dilution daily.
Storage:	Store lyophilized material at 2-8 °C. For storage at -20 °C after reconstitution, dilute with an equal volume of glycerol to prevent loss of enzymatic activity. Prepare working dilution prior to use and then discard.
Shelf Life:	1 year from date of receipt
Specificity:	Based on IEP, this antibody reacts with: <ul style="list-style-type: none"><li>• Kappa (<math>\kappa</math>) light chains on all Human immunoglobulins</li></ul>
Cross Reactivity:	Based on IEP, no reactivity is observed to: <ul style="list-style-type: none"><li>• non-immunoglobulin Human serum proteins</li><li>• heavy chains on all Human immunoglobulins</li><li>• Lambda (<math>\lambda</math>) light chains on all Human immunoglobulins</li></ul>
Country of Origin:	Goat antiserum was obtained from healthy animals of US origin and under the care of a registered veterinarian.
Note:	This conjugate was prepared using Part # GtxHu-084-D, Lot # 79-42-103020.
Applications:	This conjugate is suitable for use in: ELISA, WB, IHC, CL. The optimal working dilution should be determined by the investigator. Suggested starting dilution(s): <ul style="list-style-type: none"><li>• 1:500-1:5,000 for Immunohistochemistry</li><li>• 1:200-1:5,000 for ELISA/Western blot</li></ul>
Disclaimer:	<i>For in vitro Laboratory Use Only.</i> Not for diagnostic or therapeutic use. Not for human or animal consumption. The proper selection and use of our products is the sole responsibility of the end user, and therefore we can offer no guarantee to a specific experimental outcome. Suggested applications of our products are not recommendations to use our products in violation of any patent or as a license under any patent of ImmunoReagents, Inc.

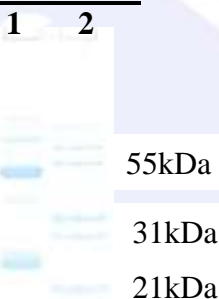
**Product may not be resold or modified for resale without prior written approval of ImmunoReagents, Inc.**

## Testing Results

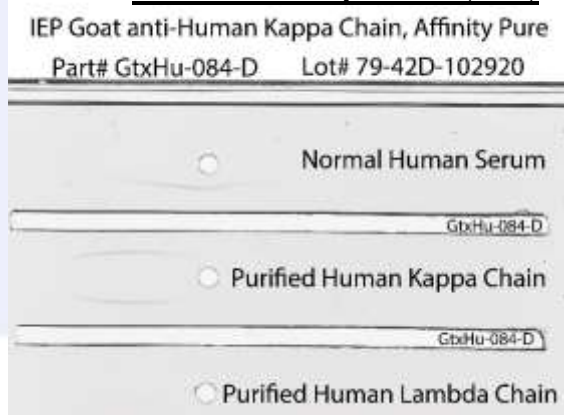
**PRODUCT:** Goat anti-Human Kappa ( $\kappa$ ) Light Chain, HRP Conjugate  
**PART NUMBER:** GtxHu-084-DHRPX  
**LOT NUMBER:** 66-114-111720

<u>TESTS</u>	<u>SPECIFICATIONS</u>	<u>RESULTS</u>
Appearance:	Reddish powder	PASS
Purity:	Two predominant bands at 50 and 24 kDa based on SDS-PAGE	PASS
Specificity:	Based on IEP, this antibody has precipitin bands with: <ul style="list-style-type: none"> <li>• Kappa (<math>\kappa</math>) light chains on all Human immunoglobulins</li> </ul>	PASS
Cross Reactivity:	Based on IEP, no precipitin bands are observed to: <ul style="list-style-type: none"> <li>• non-immunoglobulin Human serum proteins</li> <li>• heavy chains on all Human immunoglobulins</li> <li>• Lambda (<math>\lambda</math>) light chains on all Human immunoglobulins</li> </ul>	PASS PASS PASS
ELISA:	Dilution giving $A^{450}$ reading of $\geq 1.0$ when tested against Human IgG (H&L) coated at 2 $\mu\text{g/ml}$	1: 50,000

### SDS-PAGE



### Immunoelectrophoresis (IEP)



- 1) GtxHu-084-D, Lot # 66-114-111720
- 2) Mol Weight Standard

Date: December 2, 2020

Signature: \_\_\_\_\_  
 Quality Control