

Certificate of Analysis

Product: Goat anti-Human IgG + IgA + IgM, Biotin Conjugate

Part Number: GtxHu-010-DBIO
Lot Number: 69-178-061920
Amount: 2.0 mg of antibody at 1.50 mg/ml (E^{1%} at 280 nm = 13.0)
Label: NHS-LC-Biotin
Purification: Affinity purified using solid phase Human IgG + IgA + IgM
Purity: Affinity purified antibody is ≥ 95 % based on SDS-PAGE
Host: Goat
Immunogen: Purified Human IgG + IgA + IgM, whole molecule
Buffer: 10 mM Sodium Phosphate, 0.15 M Sodium Chloride, pH 7.2,
1 % (w/v) BSA, Protease/IgG free
Preservative: 0.05 % (w/v) Sodium Azide
Storage: Store undiluted liquid at 2-8 °C. Prepare working dilution prior to use and then discard.
Shelf Life: 1 year from date of receipt

Specificity: Based on IEP, this antibody reacts with:

- heavy chains on Human IgG + IgA + IgM
- light chains on all Human immunoglobulins

Cross Reactivity: Based on IEP, no reactivity is observed to:

- non-immunoglobulin Human serum proteins

Country of Origin: Goat serum was obtained from animals of US origin and under the care of a registered veterinarian.

Note: This conjugate was prepared using Part # GtxHu-010-D, Lot # 35-61-121114.

Applications: This conjugate is suitable for use in: ELISA, WB, IHC, FACS. The optimal working dilution should be determined by the investigator. Suggested starting dilution(s):

- 1:20,000 – 1:500,000 for ELISA/Western blot
- 1:500 – 1:5,000 for Immunohistochemistry

Disclaimer: *For in vitro Laboratory Use Only.* Not for diagnostic or therapeutic use. Not for human or animal consumption. The proper selection and use of our products is the sole responsibility of the end user, and therefore we can offer no guarantee to a specific experimental outcome. Suggested applications of our products are not recommendations to use our products in violation of any patent or as a license under any patent of ImmunoReagents, Inc.

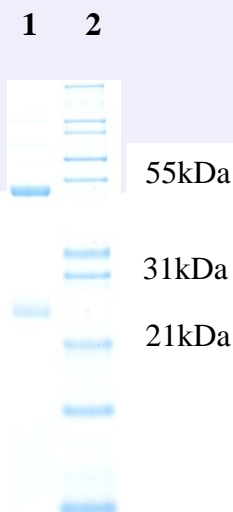
Product may not be resold or modified for resale without prior written approval of ImmunoReagents, Inc.

Testing Results

PRODUCT: Goat anti-Human IgG + IgA + IgM, Biotin Conjugate
PART NUMBER: GtxHu-010-DBIO
LOT NUMBER: 69-178-061920

| <u>TESTS</u> | <u>SPECIFICATIONS</u> | <u>RESULTS</u> |
|-------------------|--|---|
| Appearance: | Clear, colorless liquid | PASS |
| Purity: | Two predominant bands at 50 kDa and 24 kDa based on SDS-PAGE | PASS |
| Specificity: | Based on IEP, this antibody has precipitin bands with: <ul style="list-style-type: none"> • heavy chains on Human IgG + IgA + IgM • light chains on all Human immunoglobulins | PASS PASS |
| Cross Reactivity: | Based on IEP, this antibody does not have precipitin bands to: <ul style="list-style-type: none"> • non-immunoglobulin Human serum proteins | PASS |
| ELISA: | Dilution giving A^{405} reading of ≥ 1.0 when tested against: <ul style="list-style-type: none"> • Human IgG coated at 2 $\mu\text{g/ml}$ • Human IgA coated at 2 $\mu\text{g/ml}$ • Human IgM coated at 2 $\mu\text{g/ml}$ | 1:1,000,000 1: 550,000 1: 500,000 |

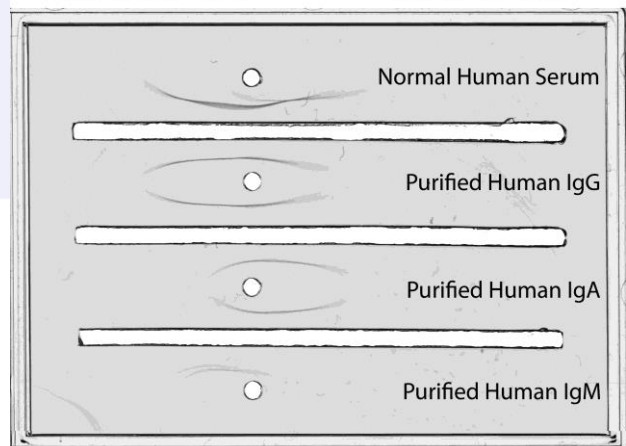
SDS-PAGE



- 1) GtxHu-010-D, Lot # 35-61-121114
- 2) Mol Weight Standard

Immuno-electrophoresis (IEP)

IEP Image for Goat anti-Human IgG + IgA + IgM, Affinity Pure
 Part# GtxHu-010-D Lot# 35-61-121114



Date: June 25, 2020

Signature: _____
Quality Control