

---

---

## Certificate of Analysis

Product:	Goat anti-Human IgE ( $\epsilon$ chain), ALP Conjugate
Part Number:	GtxHu-002-DALP
Lot Number:	68-190-010720
Amount:	1.0 mg of antibody at 1.50 mg/ml ( $E^{1\%}$ at 280 nm = 13.0)
Label:	Alkaline Phosphatase (ALP)
Form:	Liquid
Purification:	Affinity purified using solid phase Human IgE
Purity:	Affinity purified antibody is $\geq 95\%$ based on SDS-PAGE
Host:	Goat
Immunogen:	Purified Human IgE, $\epsilon$ chain
Buffer:	30 mM Triethanolamine, pH 7.2, 5 mM Magnesium Chloride, 0.1 mM Zinc Chloride, 1 % (w/v) BSA, Protease/IgG free
Preservative:	0.05 % (w/v) Sodium Azide
Storage:	Store undiluted liquid at 2 - 8 °C. For storage at - 20 °C, dilute with an equal volume of glycerol to prevent loss of enzymatic activity. Prepare working dilution prior to use and then discard.
Shelf Life:	1 year from date of receipt
Specificity:	Based on IEP, this antibody reacts with: <ul style="list-style-type: none"><li>• heavy (<math>\epsilon</math>) chains on Human IgE</li></ul>
Cross Reactivity:	Based on IEP, no reactivity is observed to: <ul style="list-style-type: none"><li>• light chains on all Human immunoglobulins</li><li>• non-immunoglobulin Human serum proteins</li></ul>
Country of Origin:	Goat serum was obtained from healthy animals of US origin and under the care of a registered veterinarian.
Note:	This conjugate was prepared using Part # GtxHu-002-D, Lot # 68-165-111519.
Applications:	This conjugate is suitable for use in: ELISA, WB, IHC, ICC, CL. The optimal working dilution should be determined by the investigator. Suggested starting dilution(s): <ul style="list-style-type: none"><li>• 1:50-1:1,000 for Immunohistochemistry</li><li>• 1:500-1:2,100 for ELISA/Western blot</li></ul>
Disclaimer:	<i>For in vitro Laboratory Use Only.</i> Not for diagnostic or therapeutic use. Not for human or animal consumption. The proper selection and use of our products is the sole responsibility of the end user, and therefore we can offer no guarantee to a specific experimental outcome. Suggested applications of our products are not recommendations to use our products in violation of any patent or as a license under any patent of ImmunoReagents, Inc.

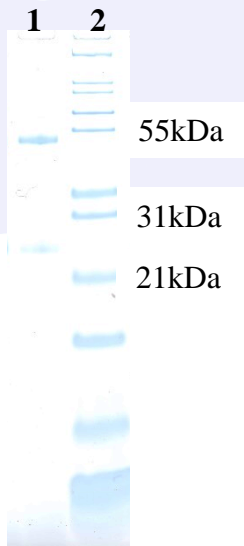
**Product may not be resold or modified for resale without prior written approval of ImmunoReagents, Inc.**

## Testing Results

**PRODUCT:** Goat anti-Human IgE (ε chain), ALP Conjugate  
**PART NUMBER:** GtxHu-002-DALP  
**LOT NUMBER:** 68-190-010720

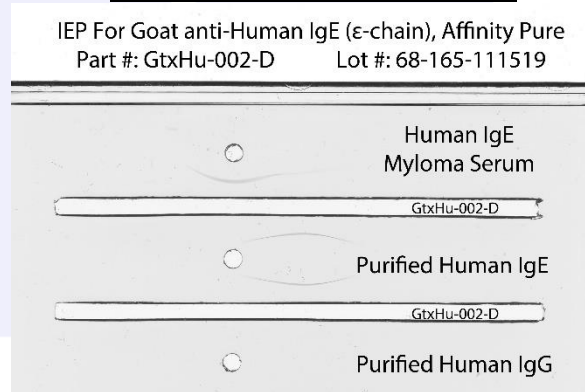
<u>TESTS</u>	<u>SPECIFICATIONS</u>	<u>RESULTS</u>
Appearance:	Clear, colorless liquid	PASS
Purity:	Two predominant bands at 50 and 24 kDa based on SDS PAGE	PASS
Specificity:	Based on IEP, this antibody has precipitin bands with: <ul style="list-style-type: none"> <li>• heavy (ε) chains on Human IgE</li> </ul>	PASS
Cross Reactivity:	Based on IEP, this antibody does not have precipitin bands to:	
	<ul style="list-style-type: none"> <li>• light chains on all Human immunoglobulins</li> <li>• non-immunoglobulin Human serum proteins</li> </ul>	PASS PASS
ELISA:	Dilution giving A <sup>405</sup> reading of ≥ 1.0 when tested against Human IgE coated at 2 µg/ml	1:2,450

### SDS-PAGE



- 1) GtxHu-002-D, Lot # 68-165-111519
- 2) Mol Weight Standard

### Immunoelectrophoresis (IEP)



Date: January 14, 2020

Signature: \_\_\_\_\_  
Quality Control

