
Certificate of Analysis

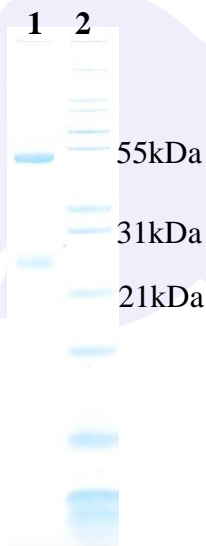
Product:	Goat anti-Rabbit IgG (H&L), Affinity Pure
Part Number:	GtxRb-003-E
Lot Number	62-77-050818
Concentration:	10.0 mg/ml (E ¹ % at 280 nm = 14.0)
Amount:	2.0 mg
Form:	Clear, colorless liquid, 0.2 µm filtered
Purification:	Affinity purified using solid phase Rabbit IgG
Purity:	> 95% based on SDS-PAGE
Host:	Goat
Immunogen:	Purified Rabbit IgG, whole molecule
Buffer:	10 mM Sodium Phosphate, 0.15 M Sodium Chloride, pH 7.2
Preservative:	0.05 % (w/v) Sodium Azide
Storage:	2-8 ° C
Expiration Date:	May 08, 2021
Specificity:	Based on IEP, this antibody reacts with: <ul style="list-style-type: none">• heavy (γ) chains on Rabbit IgG• light chains on all Rabbit immunoglobulins
Cross Reactivity:	Based on IEP, no reactivity is observed to: <ul style="list-style-type: none">• non-immunoglobulin Rabbit serum proteins• serum proteins from Bovine, Human, or Mouse• IgG from Human or Mouse
Country of Origin:	Goat serum was obtained from healthy animals of US origin and under the care of a registered veterinarian.
Applications:	The optimal working dilution should be determined by the investigator. Suitable for use in: ELISA, IP, IDA, WB, IHC
Disclaimer:	<i>For in vitro Laboratory Use Only.</i> Not for diagnostic or therapeutic use. Not for Human or animal consumption. The proper selection and use of our products is the sole responsibility of the end user, and therefore we can offer no guarantee to a specific experimental outcome. Suggested applications of our products are not recommendations to use our products in violation of any patent or as a license under any patent of ImmunoReagents, Inc.
Rev.1 051418TB	Product may not be resold or modified for resale without prior written approval of ImmunoReagents, Inc.

Testing Results

PRODUCT: Goat anti-Rabbit IgG (H&L), Affinity Pure
PART NUMBER: GtxRb-003-E
LOT NUMBER: 62-77-050818

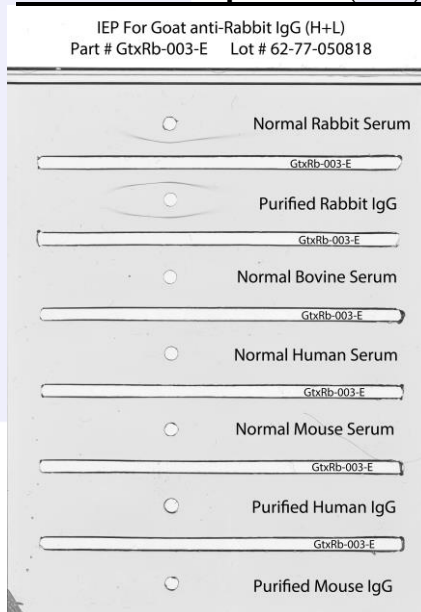
<u>TESTS</u>	<u>SPECIFICATIONS</u>	<u>RESULTS</u>
Appearance:	Clear and colorless	PASS
Purity:	Two predominant bands at 50 and 24 kDa based on SDS PAGE	PASS
Specificity:	Based on IEP, this antibody has precipitin bands with: <ul style="list-style-type: none">heavy (γ) chains on Rabbit IgGlight chains on all Rabbit immunoglobulins	PASS PASS
Cross Reactivity:	Based on IEP, no precipitin bands are observed to: <ul style="list-style-type: none">non-immunoglobulin Rabbit serum proteinsserum proteins from Bovine, Human, or MouseIgG from Human or Mouse	PASS PASS PASS

SDS PAGE



- 1) GtxRb-003-E, Lot # 62-77-050818
2) Mol Weight Standard

Immunoelectrophoresis (IEP)



Date: May 14, 2018

Signature: _____


Quality Control