

Certificate of Analysis

Product:	Goat anti-Human IgE (ε chain), FITC Conjugate
Part Number:	GtxHu-002-EFITC
Lot Number:	67-10-102418
Amount:	1.0 mg of antibody at 1.50 mg/ml (E ^{1%} at 280 nm = 13.0)
Form:	Clear, fluorescent yellow liquid
Fluorophore:	Fluorescein-5-isothiocyanate (FITC) Ex = 494 nm; Em = 518 nm
Fluor/Protein Ratio:	6.6 Moles FITC per Mole Antibody
Purification:	Antibody was affinity purified using solid phase Human IgE
Purity:	Affinity purified antibody is ≥ 95% based on SDS-PAGE
Host:	Goat
Immunogen:	Purified Human IgE, ε chain
Buffer:	10 mM Sodium Phosphate, 0.15 M Sodium Chloride, pH 7.2, 1 % (w/v) BSA, Protease/IgG free
Preservative:	0.05 % (w/v) Sodium Azide
Storage:	2-8 °C
Shelf Life:	1 year from date of receipt
Specificity:	Based on IEP, this antibody reacts with: <ul style="list-style-type: none">• heavy (ε) chains on human IgE
Cross Reactivity:	Based on IEP, no reactivity is observed to: <ul style="list-style-type: none">• light chains on human immunoglobulins• non-immunoglobulin human serum proteins• serum proteins from Bovine, Mouse or Rabbit
Country of Origin:	Goat antiserum was obtained from healthy animals of US origin and under the care of a registered veterinarian.
Note:	This conjugate was prepared using Part # GtxHu-002-E, lot # 58-189-101018.
Applications:	This conjugate is suitable for use in FLISA, IF, IM, IHC, FACS. The optimal working dilution should be determined by the investigator. Suggested starting dilution(s): <ul style="list-style-type: none">• 1:20 – 1:2,000 for Immunohistochemistry• 1:50 – 1:5,000 for Immunocytochemistry
Disclaimer:	<i>For in vitro Laboratory Use Only.</i> Not for diagnostic or therapeutic use. Not for human or animal consumption. Suggested applications of our products are not recommendations to use our products in violation of any patent or as a license under any patent of ImmunoReagents, Inc.

Product may not be resold or modified for resale without prior written approval of ImmunoReagents, Inc.

Testing Results

PRODUCT: Goat anti-Human IgE (ϵ chain), FITC Conjugate
PART NUMBER: GtxHu-002-EFITC
LOT NUMBER: 67-10-102418

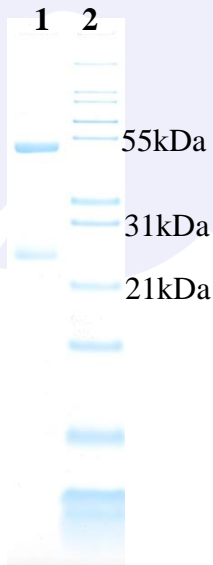
TESTS

SPECIFICATIONS

RESULTS

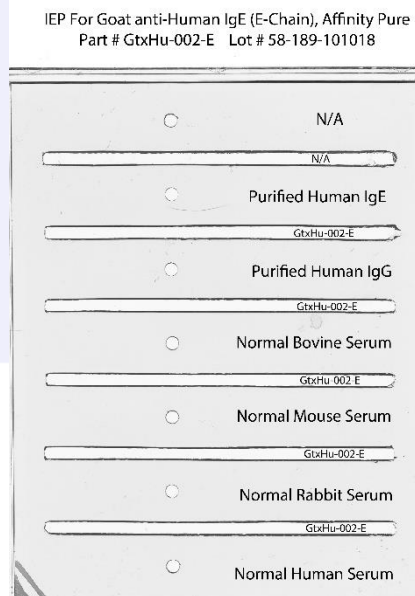
Appearance	Clear, fluorescent yellow liquid	PASS
Purity	Two predominant bands at 50 and 24 kDa based on SDS PAGE	PASS
Specificity	Based on IEP, this antibody has a precipitin band against: <ul style="list-style-type: none"> • heavy (γ) chains on human IgE 	PASS
Cross Reactivity	Based on IEP, no reactivity is observed to: <ul style="list-style-type: none"> • light chains on human immunoglobulins • non-immunoglobulin human serum proteins • serum proteins from Bovine, Mouse or Rabbit 	PASS PASS PASS
FLISA:	Mean fluorescent value of 8 μ g/ml of FITC conjugate when tested against: <ul style="list-style-type: none"> • normal human IgE coated at 4 μg/ml 	609 MFI's
F.I.T.:	Mean fluorescent intensity of a 1:1000 dilution at Ex-488 nm (+/-9) / Em-518 nm (+/-9)	8604 MFI's

SDS PAGE



- 1) GtxHu-0002-E, Lot # 58-189-101018
- 2) Mol Weight Standard

Immuno-electrophoresis (IEP)



Date: November 1, 2018

Signature: _____

John Alt

Quality Control