

Certificate of Analysis

Product: Goat anti-Human IgE (ϵ chain), Affinity Pure

Part Number: GtxHu-002-D

Lot Number: 86-82-042221

Concentration: 10.0 mg/ml ($E^{1\%}$ at 280 nm = 13.0)

Amount: 1.0 mg

Form: Clear, colorless liquid, 0.2 μ m filtered

Purification: Affinity purified using solid phase Human IgE

Purity: $\geq 95\%$ based on SDS-PAGE

Host: Goat

Immunogen: Purified Human IgE, ϵ chain

Buffer: 10 mM Sodium Phosphate, 0.15 M Sodium Chloride, pH 7.2

Preservative: 0.05 % (w/v) Sodium Azide

Storage: 2-8 ° C

Expiration Date: April 22, 2024

Specificity: Based on IEP, this antibody reacts with:

- heavy (ϵ) chains on Human IgE

Cross Reactivity: Based on IEP, no reactivity is observed to:

- light chains on all Human immunoglobulins
- non-immunoglobulin Human serum proteins

Country of Origin: Goat serum was obtained from healthy animals of US origin and under the care of a registered veterinarian.

Applications: Suitable for use in: ELISA, WB, IHC, ICC, CL, FACS, IM, IF.
The optimal working dilution should be determined by the investigator.

Disclaimer: *For in vitro Laboratory Use Only.* Not for diagnostic or therapeutic use. Not for Human or animal consumption. The proper selection and use of our products is the sole responsibility of the end user, and therefore we can offer no guarantee to a specific experimental outcome. Suggested applications of our products are not recommendations to use our products in violation of any patent or as a license under any patent of ImmunoReagents, Inc.

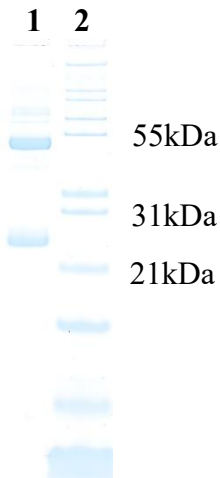
Product may not be resold or modified for resale without prior written approval of ImmunoReagents, Inc.

Testing Results

PRODUCT: Goat anti-Human IgE (ϵ chain), Affinity Pure
PART NUMBER: GtxHu-002-D
LOT NUMBER: 86-82-042221

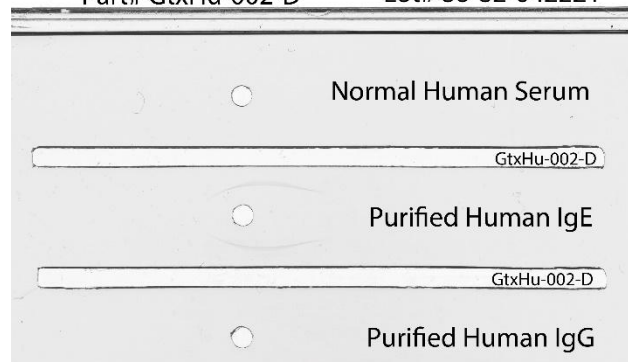
<u>TESTS</u>	<u>SPECIFICATIONS</u>	<u>RESULTS</u>
Appearance:	Clear and Colorless	PASS
Purity:	Two predominant bands at 50 and 24 kDa based on SDS PAGE	PASS
Specificity:	Based on IEP, this antibody has precipitin bands with: <ul style="list-style-type: none">heavy (ϵ) chains on Human IgE	PASS
Cross Reactivity:	Based on IEP, this antibody does not have precipitin bands to: <ul style="list-style-type: none">light chains on all Human immunoglobulinsnon-immunoglobulin Human serum proteins	PASS PASS

SDS PAGE



Immunoelectrophoresis (IEP)

IEP for Goat anti-Human IgE (ϵ -chain), Affinity Pure
Part# GtxHu-002-D Lot# 86-82-042221



- 1) GtxHu-002-D, Lot # 86-82-042221
- 2) Mol Weight Standard

Date: April 27, 2021

Signature: _____
Quality Control