

Certificate of Analysis

Product: Donkey anti-Sheep IgG (H&L), Affinity Pure

Part Number: DkxSh-003-F
Lot Number: 68-139-100719
Concentration: 10.0 mg/ml (E^{1%} at 280 nm = 14.0)
Amount: 2.0 mg
Form: Clear, colorless liquid, 0.2 µm filtered
Purification: Affinity purified using solid phase Sheep IgG
Purity: ≥ 95% based on SDS-PAGE
Immunogen: Purified Sheep IgG, whole molecule
Buffer: 10 mM Sodium Phosphate, 0.15 M Sodium Chloride, pH 7.2
Preservative: 0.05 % (w/v) Sodium Azide
Storage: 2-8 °C
Expiration Date: October 07, 2022

Specificity: Based on IEP, this antibody reacts with:

- heavy (γ) chains on Sheep IgG
- light chains on all Sheep immunoglobulins

Cross Reactivity: Based on IEP, no reactivity is observed to:

- non-immunoglobulin Sheep serum proteins
- IgG from Human, Mouse or Rabbit

Country of Origin: Donkey serum was obtained from healthy animals of US origin and under the care of a registered veterinarian.

Applications: This antibody has been absorbed to remove cross reactivity with Human, Mouse, or Rabbit IgG. The optimal working dilution should be determined by the investigator.
Suitable for use in: ELISA, IP, IDA, WB, IHC, Absorption

Disclaimer: *For in vitro Laboratory Use Only.* Not for diagnostic or therapeutic use. Not for Human or animal consumption. The proper selection and use of our products is the sole responsibility of the end user, and therefore we can offer no guarantee to a specific experimental outcome. Suggested applications of our products are not recommendations to use our products in violation of any patent or as a license under any patent of ImmunoReagents, Inc.

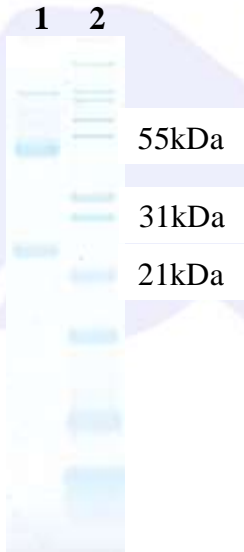
Product may not be resold or modified for resale without prior written approval of ImmunoReagents, Inc.

Testing Results

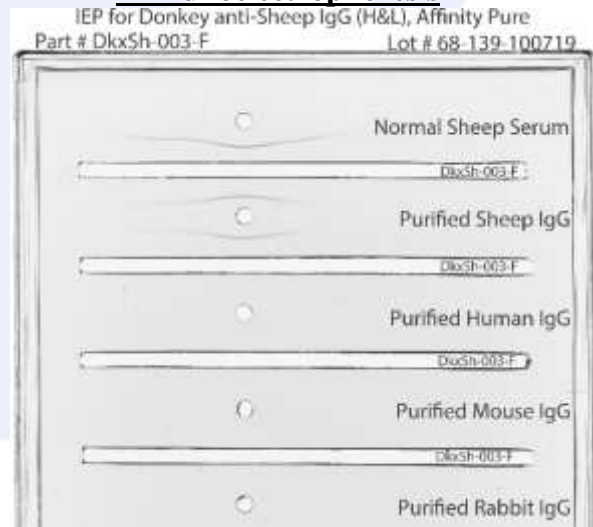
PRODUCT: Donkey anti- Sheep IgG (H&L), Affinity Pure
PART NUMBER: DkxSh-003-F
LOT NUMBER: 68-139-100719

<u>TESTS</u>	<u>SPECIFICATIONS</u>	<u>RESULTS</u>
Appearance:	Clear and Colorless	PASS
Purity:	Two predominant bands at 50 and 24 kDa based on SDS PAGE	PASS
Specificity:	Based on IEP, this antibody has precipitin bands with: <ul style="list-style-type: none">heavy (γ) chains on Sheep IgGlight chains on all Sheep immunoglobulins	PASS PASS
Cross Reactivity:	Based on IEP, this antibody does not have precipitin bands to: <ul style="list-style-type: none">non-immunoglobulin Sheep serum proteinsIgG from Human, Mouse or Rabbit	PASS PASS

SDS PAGE



Immunoelectrophoresis



- 1) DkxSh-003-F, Lot # 68-139-100719
- 2) Mol Weight Standard

Date: October 14, 2019

Signature: 
Quality Control