

Certificate of Analysis

Product: Goat anti-Human IgM (μ chain), F(ab'2) Fragment

Part Number: GtxHu-006-J3
Lot Number: 16-166-072511
Concentration: 3.26 mg/ml (E^{1%} at 280 nm = 13.0)
Amount: 1.0 mg
Form: Clear, colorless liquid, 0.2 μ m filtered
Purification: Affinity purified using solid phase Human IgM
Purity: \geq 90% based on SDS-PAGE
Small amounts of intact IgG may be present

Host: Goat
Immunogen: Purified Human IgM, μ chain
Buffer: 10 mM Sodium Phosphate, 0.15 M Sodium Chloride, pH 7.2
Preservative: 0.05 % (w/v) Sodium Azide
Storage: 2-8 °C
Expiration Date: December 17, 2022

Specificity: Based on IEP, this antibody reacts with:

- heavy (μ) chains on Human IgM

Cross Reactivity: Based on IEP, no reactivity is observed to:

- non-immunoglobulin Human serum proteins
- IgG from Human or Mouse

Country of Origin: Goat serum was obtained from healthy animals of US origin and under the care of a registered veterinarian.

Applications: This antibody is suitable for use in most immunoassay formats for the detection of Human IgM. This antibody is suitable for use in Western ImmunoBlots and ImmunoHistoChemistry (IHC). The optimal working dilution should be determined by the investigator.

Disclaimer: *For in vitro Laboratory Use Only.* Not for diagnostic or therapeutic use. Not for Human or animal consumption. The proper selection and use of our products is the sole responsibility of the end user, and therefore we can offer no guarantee to a specific experimental outcome. Suggested applications of our products are not recommendations to use our products in violation of any patent or as a license under any patent of ImmunoReagents, Inc.

Product may not be resold or modified for resale without prior written approval of ImmunoReagents, Inc.

Testing Results

PRODUCT: Goat anti-Human IgM (μ chain), F(ab)'2 fragment
PART NUMBER: GtxHu-006-J3
LOT NUMBER: 16-166-072511

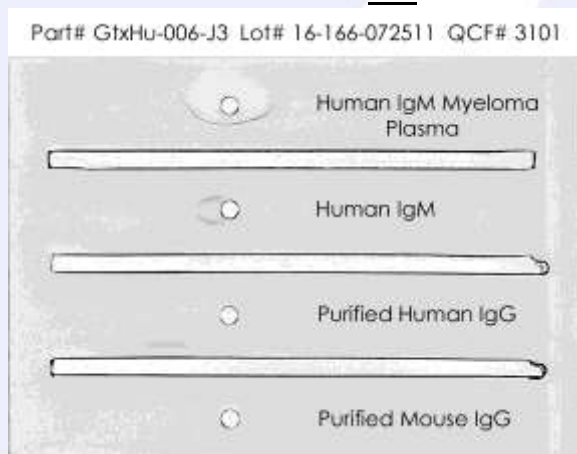
<u>TESTS</u>	<u>SPECIFICATIONS</u>	<u>RESULTS</u>
Appearance:	Clear and Colorless	PASS
Purity:	One predominant band at 24 kDa based on SDS PAGE	PASS
Specificity:	Based on IEP, this antibody reacts with: <ul style="list-style-type: none">heavy (μ) chains on Human IgM	PASS
Cross Reactivity:	Based on IEP, no reactivity is observed to: <ul style="list-style-type: none">non-immunoglobulin Human serum proteinsIgG from Human or Mouse	PASS PASS

SDS PAGE



- 1) GtxHu-006-J3, Lot # 16-166-072511
- 2) Mol Weight Standard

IEP



Date: December 17, 2020

Signature: _____

Quality Control