

## Certificate of Analysis

Product:	Goat anti-Human IgG (H&L), Affinity Pure
Part Number:	GtxHu-003-E
Lot Number:	86-50-112420
Concentration:	10.0 mg/ml (E <sup>1%</sup> at 280 nm = 13.0)
Amount:	2.0 mg
Form:	Clear, colorless liquid, 0.2 µm filtered
Purification:	Affinity purified using solid phase Human IgG
Purity:	≥ 95% based on SDS-PAGE
Host:	Goat
Immunogen:	Purified Human IgG, whole molecule
Buffer:	10 mM Sodium Phosphate, 0.15 M Sodium Chloride, pH 7.2
Preservative:	0.05 % (w/v) Sodium Azide
Storage:	2-8 °C
Expiration Date:	November 24, 2023
Specificity:	Based on IEP, this antibody reacts with: <ul style="list-style-type: none"><li>• heavy (γ) chains on Human IgG</li><li>• light chains on all Human immunoglobulins</li></ul>
Cross Reactivity:	Based on IEP, no reactivity is observed to: <ul style="list-style-type: none"><li>• non-immunoglobulin Human serum proteins</li><li>• serum proteins from Bovine, Mouse or Rabbit</li></ul>
Country of Origin:	Goat serum was obtained from healthy animals of US origin and under the care of a registered veterinarian.
Applications:	The optimal working dilution should be determined by the investigator. Suitable for use in: ELISA, IP, IDA, WB, IHC, Absorption
Disclaimer:	<i>For in vitro Laboratory Use Only.</i> Not for diagnostic or therapeutic use. Not for Human or animal consumption. The proper selection and use of our products is the sole responsibility of the end user, and therefore we can offer no guarantee to a specific experimental outcome. Suggested applications of our products are not recommendations to use our products in violation of any patent or as a license under any patent of ImmunoReagents, Inc.

**Product may not be resold or modified for resale without prior written approval of ImmunoReagents, Inc.**

## Testing Results

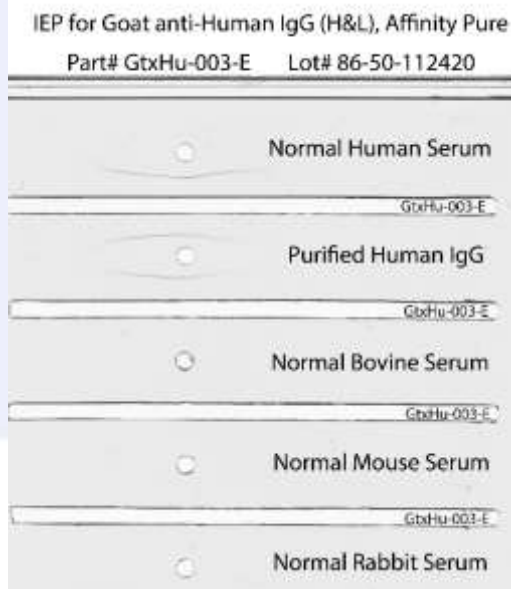
**PRODUCT:** Goat anti-Human IgG (H&L), Affinity Pure  
**PART NUMBER:** GtxHu-003-E  
**LOT NUMBER:** 86-50-112420

<u>TESTS</u>	<u>SPECIFICATIONS</u>	<u>RESULTS</u>
Appearance:	Clear and Colorless	PASS
Purity:	Two predominant bands at 50 and 24 kDa based on SDS PAGE	PASS
Specificity:	Based on IEP, this antibody has precipitin bands with:	
	<ul style="list-style-type: none"> <li>• heavy (γ) chains on Human IgG</li> <li>• light chains on all Human immunoglobulins</li> </ul>	PASS PASS
Cross Reactivity:	Based on IEP, this antibody does not have precipitin bands to:	
	<ul style="list-style-type: none"> <li>• non-immunoglobulin Human serum proteins</li> <li>• serum proteins from Bovine, Mouse or Rabbit</li> </ul>	PASS PASS

### SDS PAGE



### Immunoelectrophoresis (IEP)



- 1) GtxHu-003-E, Lot # 86-50-112420
- 2) Mol Weight Standard

Date: November 25, 2020

Signature:  \_\_\_\_\_  
 Quality Control