
Certificate of Analysis

Product: Rabbit anti-Cat IgG (H&L), Affinity Pure

Part Number: RbxCt-003-D
Lot Number: 47-176-041217
Concentration: 11.7 mg/ml (E^{1%} at 280 nm = 13.0)
Amount: 2.0 mg
Label: Unconjugated
Form: Clear, colorless liquid, 0.2 µm filtered
Purification: Affinity purified using solid phase Cat IgG
Purity: ≥ 95 % based on SDS-PAGE
Host: Rabbit
Immunogen: Purified Cat IgG, whole molecule
Buffer: 10 mM Sodium Phosphate, 0.15 M Sodium Chloride, pH 7.2
Preservative: 0.05 % (w/v) Sodium Azide
Storage: 2 - 8 °C
Expiration Date: July 17, 2021

Specificity: Based on IEP, this antibody reacts with:

- heavy (γ) chains on Cat IgG
- light chains on all Cat immunoglobulins

Cross Reactivity: Based on IEP, no reactivity is observed to:

- non-immunoglobulin Cat serum proteins

Country of Origin: Rabbit serum was obtained from healthy animals of US origin and under the care of a registered veterinarian.

Applications: Suitable for use in: ELISA, WB, IHC, ICC, CL, FACS, IM, IF.
The optimal working dilution should be determined by the investigator.

Disclaimer: *For in vitro Laboratory Use Only.* Not for diagnostic or therapeutic use. Not for human or animal consumption. The proper selection and use of our products is the sole responsibility of the end user, and therefore we can offer no guarantee to a specific experimental outcome. Suggested applications of our products are not recommendations to use our products in violation of any patent or as a license under any patent of ImmunoReagents, Inc.

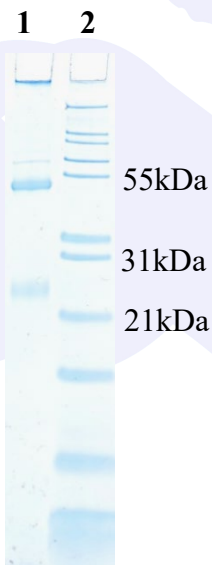
Product may not be resold or modified for resale without prior written approval of ImmunoReagents, Inc.

Testing Results

PRODUCT: Rabbit anti-Cat IgG (H&L), Affinity Pure
PART NUMBER: RbxCt-003-D
LOT NUMBER: 47-176-041217

<u>TESTS</u>	<u>SPECIFICATIONS</u>	<u>RESULTS</u>
Appearance	Clear, colorless liquid	PASS
Purity:	Two predominant bands at 50 and 24 kDa based on SDS-PAGE	PASS
Specificity:	Based on IEP, this antibody has precipitin bands against: <ul style="list-style-type: none">• heavy (γ) chains on Cat IgG• light chains on all Cat immunoglobulins	PASS PASS
Cross Reactivity:	Based on IEP, no precipitin bands are observed to: <ul style="list-style-type: none">• non-immunoglobulin Cat serum proteins	PASS

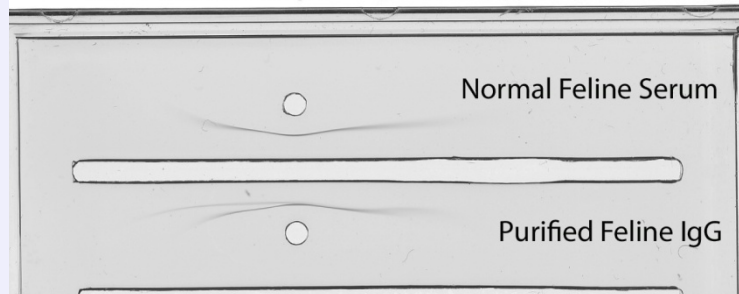
SDS-PAGE




- 1) RbxCt-003-D, Lot # 47-176-041217
- 2) Mol Weight Standard

Immunoelectrophoresis (IEP)

IEP Image for Rabbit anti-Cat IgG (H&L), Affinity Pure
Part # RbxCt-003-D Lot #47-176-041217



Date: July 17, 2019

Signature: 

Quality Control

