

Certificate of Analysis

Product:	Goat anti-Human IgE (ϵ chain), FITC Conjugate
Part Number:	GtxHu-002-DFITC
Lot Number:	90-85-070721
Amount:	1.0 mg of antibody at 1.50 mg/ml ($E^{1\%}$ at 280 nm = 13.0)
Form:	Clear, fluorescent yellow liquid
Fluorophore:	Fluorescein-5-isothiocyanate (FITC) $E_x = 494$ nm; $E_m = 518$ nm
Fluor/Protein Ratio:	8.2 Moles FITC per Mole Antibody
Purification:	Antibody was affinity purified using solid phase Human IgE
Purity:	Affinity purified antibody is $\geq 95\%$ based on SDS-PAGE
Host:	Goat
Immunogen:	Purified Human IgE, ϵ chain
Buffer:	10 mM Sodium Phosphate, 0.15 M Sodium Chloride, pH 7.2, 1 % (w/v) BSA, Protease/IgG free
Preservative:	0.05 % (w/v) Sodium Azide
Storage:	Store undiluted liquid at 2-8 °C. Prepare working dilution prior to use and then discard.
Shelf Life:	1 year from date of receipt
Specificity:	Based on IEP, this antibody reacts with: <ul style="list-style-type: none">• heavy (ϵ) chains on Human IgE
Cross Reactivity:	Based on IEP, no reactivity is observed to: <ul style="list-style-type: none">• light chains on Human immunoglobulins• non-immunoglobulin Human serum proteins
Country of Origin:	Goat antiserum was obtained from healthy animals of US origin and under the care of a registered veterinarian.
Note:	This conjugate was prepared using Part # GtxHu-002-D, Lot # 81-41-011221.
Applications:	This conjugate is suitable for use in: FLISA, IF, IM, IHC, FACS. The optimal working dilution should be determined by the investigator. Suggested starting dilution(s): <ul style="list-style-type: none">• 1:20 – 1:2,000 for Immunohistochemistry• 1:50 – 1:5,000 for Immunocytochemistry
Disclaimer:	<i>For in vitro Laboratory Use Only.</i> Not for diagnostic or therapeutic use. Not for human or animal consumption. The proper selection and use of our products is the sole responsibility of the end user, and therefore we can offer no guarantee to a specific experimental outcome. Suggested applications of our products are not recommendations to use our products in violation of any patent or as a license under any patent of ImmunoReagents, Inc.

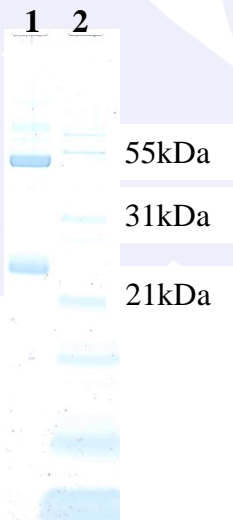
Product may not be resold or modified for resale without prior written approval of ImmunoReagents, Inc.

Testing Results

PRODUCT: Goat anti-Human IgE (ε chain), FITC Conjugate
PART NUMBER: GtxHu-002-DFITC
LOT NUMBER: 90-85-070721

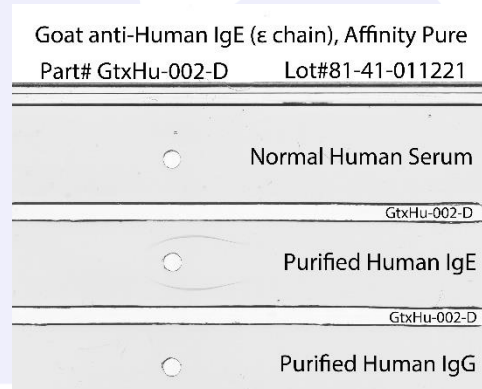
<u>TESTS</u>	<u>SPECIFICATIONS</u>	<u>RESULTS</u>
Appearance	Clear, fluorescent yellow liquid	PASS
Purity	Two predominant bands at 50 and 24 kDa based on SDS-PAGE	PASS
Specificity	Based on IEP, this antibody has a precipitin band against: <ul style="list-style-type: none"> • heavy (γ) chains on Human IgE 	PASS
Cross Reactivity	Based on IEP, no reactivity is observed to:	
	<ul style="list-style-type: none"> • light chains on Human immunoglobulins • non-immunoglobulin Human serum proteins 	PASS PASS
FLISA:	Mean fluorescent value of 8 μg/ml of FITC conjugate when tested against normal Human IgE coated at 4 μg/ml	266 MFI's

SDS-PAGE



- 1) GtxHu-002-D, Lot # 81-41-011221
- 2) Mol Weight Standard

Immunoelectrophoresis (IEP)



Date: August 9, 2021

Signature: Joe Beredon, Ph.D.
Quality Control