

Certificate of Analysis

Product:	Rabbit anti-Human IgG (H&L), Affinity Pure
Part Number:	RbxHu-003-E
Lot Number:	61-104-072018
Concentration:	10.0 mg/ml (E ^{1%} at 280 nm = 13.0)
Amount:	2.0 mg
Form:	Clear, colorless liquid, 0.2 µm filtered
Purification:	Affinity purified using solid phase Human IgG
Purity:	≥ 95% based on SDS-PAGE
Host:	Rabbit
Immunogen:	Purified Human IgG, whole molecule
Buffer:	10 mM Sodium Phosphate, 0.15 M Sodium Chloride, pH 7.2
Preservative:	0.05 % (w/v) Sodium Azide
Storage:	2-8 ° C
Expiration Date:	July 20, 2021
Specificity:	Based on IEP, this antibody reacts with: <ul style="list-style-type: none">• heavy (γ) chains on human IgG• light chains on all human immunoglobulins
Cross Reactivity:	Based on IEP, no reactivity is observed to: <ul style="list-style-type: none">• non-immunoglobulin human serum proteins• Mouse IgG and serum proteins
Country of Origin:	Rabbit serum was obtained from healthy animals of US origin and under the care of a registered veterinarian.
Applications:	This antibody is suitable for use in most immunoassay formats for the detection of Human IgG or as a capture antibody in ELISA type formats. This antibody is suitable for use in Western ImmunoBlots and ImmunoHistoChemistry (IHC). This antibody will cross react with IgG from other species. The optimal working dilution should be determined by the investigator.
Disclaimer:	<i>For in vitro Laboratory Use Only.</i> Not for diagnostic or therapeutic use. Not for human or animal consumption. Suggested applications of our products are not recommendations to use our products in violation of any patent or as a license under any patent of ImmunoReagents, Inc.

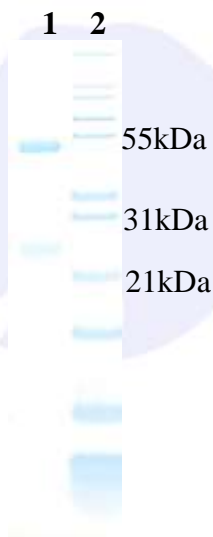
Product may not be resold or modified for resale without prior written approval of ImmunoReagents, Inc.

Testing Results

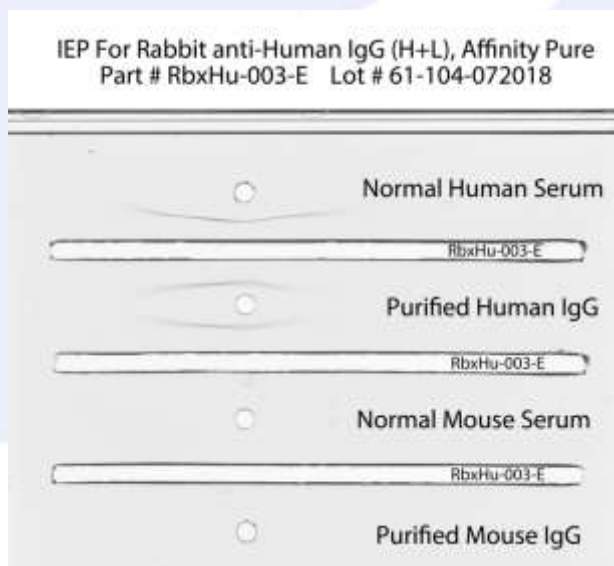
PRODUCT: Rabbit anti-Human IgG (H&L), Affinity Pure
PART NUMBER: RbxHu-003-E
LOT NUMBER: 61-104-072018

<u>TESTS</u>	<u>SPECIFICATIONS</u>	<u>RESULTS</u>
Appearance:	Clear and Colorless	PASS
Purity:	Two predominant bands at 50 and 24 kDa based on SDS PAGE	PASS
Specificity:	Based on IEP, this antibody has precipitin bands with: <ul style="list-style-type: none">heavy (γ) chains on human IgGlight chains on all human immunoglobulins	PASS PASS
Cross Reactivity:	Based on IEP, this antibody does not have precipitin bands to: <ul style="list-style-type: none">non-immunoglobulin human serum proteinsMouse IgG and serum proteins	PASS

SDS PAGE



Immunoelectrophoresis (IEP)



- 1) RbxHu-003-E, Lot # 61-104-072018
- 2) Mol Weight Standard

Date: July 27, 2018

Signature: *Nigel Wall*
Quality Control