
Certificate of Analysis

Product:	Rabbit anti-Mouse IgG (H&L), FITC Conjugate
Part Number:	RbxMu-003-EFITC
Lot Number:	81-29-111320
Amount:	2.0 mg of antibody at 1.50 mg/ml ($E^{1\%}$ at 280 nm = 13.0)
Fluorophore:	Fluorescein-5-isothiocyanate Amax = 494 nm; Emax = 518 nm
Fluor/Protein Ratio:	7.3 Moles FITC per Mole Antibody
Form:	Clear, fluorescent yellow liquid
Purification:	Affinity purified using solid phase Mouse IgG
Purity:	Affinity purified antibody is $\geq 95\%$ based on SDS-PAGE
Host:	Rabbit
Immunogen:	Purified Mouse IgG, whole molecule
Buffer:	10 mM Sodium Phosphate, 0.15 M Sodium Chloride, pH 7.2, 1 % (w/v) BSA, Protease/IgG free
Preservative:	0.05 % (w/v) Sodium Azide
Storage:	Store undiluted liquid at 2 - 8 °C. Prepare working dilution prior to use and then discard.
Shelf Life:	1 year from date of receipt
Specificity:	Based on IEP, this antibody reacts with: <ul style="list-style-type: none">• heavy (γ) chains on Mouse IgG• light chains on all Mouse immunoglobulins
Cross Reactivity:	Based on IEP, no reactivity is observed to: <ul style="list-style-type: none">• non-immunoglobulin Mouse serum proteins• Human serum proteins
Country of Origin:	Rabbit serum was obtained from healthy animals of US origin and under the care of a registered veterinarian.
Note:	This conjugate was prepared using Part # RbxMu-003-E, Lot # 20-191-032917
Applications:	This conjugate is suitable for use in: FLISA, IF, IM, IHC, FACS. The optimal working dilution should be determined by the investigator. Suggested starting dilution(s): <ul style="list-style-type: none">• 1:20 – 1:2,000 for Immunohistochemistry• 1:50 – 1:5,000 for Immunocytochemistry
Disclaimer:	<i>For in vitro Laboratory Use Only.</i> Not for diagnostic or therapeutic use. Not for human or animal consumption. The proper selection and use of our products is the sole responsibility of the end user, and therefore we can offer no guarantee to a specific experimental outcome. Suggested applications of our products are not recommendations to use our products in violation of any patent or as a license under any patent of ImmunoReagents, Inc.

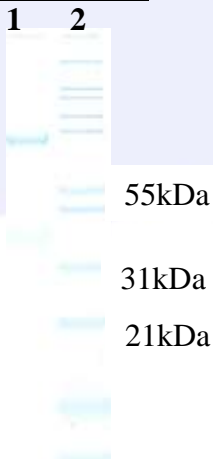
Product may not be resold or modified for resale without prior written approval of ImmunoReagents, Inc.

Testing Results

PRODUCT: Rabbit anti-Mouse IgG (H&L), FITC Conjugate
PART NUMBER: RbxMu-003-EFITC
LOT NUMBER: 81-29-111320

<u>TEST</u>	<u>SPECIFICATIONS</u>	<u>RESULTS</u>
Appearance:	Clear, fluorescent yellow liquid	PASS
Purity:	Two predominant bands at 50 and 24 kDa based on SDS-PAGE	PASS
Specificity:	Based on IEP, this antibody has precipitin bands with: <ul style="list-style-type: none">heavy (γ) chains on Mouse IgGlight chains on all Mouse immunoglobulins	PASS PASS
Cross Reactivity:	Based on IEP, this antibody does not have precipitin bands to: <ul style="list-style-type: none">non-immunoglobulin Mouse serum proteinsHuman serum proteins	PASS PASS
FLISA:	Mean fluorescent value of 8 $\mu\text{g/ml}$ of FITC conjugate when tested against normal Mouse IgG coated at 4 $\mu\text{g/ml}$	1697 MFI's

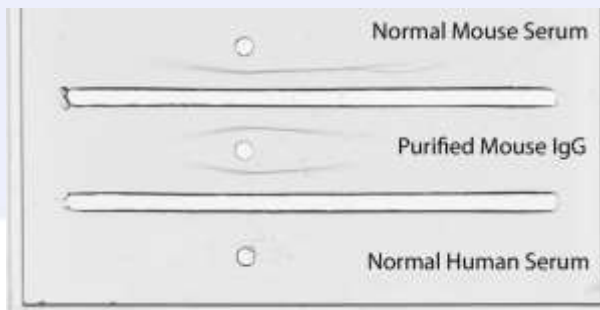
SDS-PAGE



- 1) RbxMu-003-E, Lot # 20-191-032917
- 2) Mol Weight Standard

Immunoelectrophoresis (IEP)

IEP Image for Rabbit anti-Mouse IgG (H&L), Affinity Pure
Part # RbxMu-003-E Lot # 20-191-032917



Date: November 19, 2020

Signature: _____


Quality Control