

---

---

## Certificate of Analysis

Product: Goat anti-Human IgG Fc, F(ab')<sub>2</sub> Fragment, FITC Conjugate

Part Number: GtxHu-004-JFITC

Lot Number: 70-99-1119119

Amount: 0.5 mg of antibody at 1.50 mg/ml (E<sup>1%</sup> at 280 nm = 13.0)

Form: Clear, fluorescent yellow liquid

Fluorophore: Fluorescein-5-isothiocyanate (FITC), Ex = 494 nm; Em = 519 nm

Fluor/Protein Ratio: 8.1 Moles FITC per Mole Antibody

Form: Clear, fluorescent yellow liquid

Purification: Antibody was affinity purified using solid phase Human IgG. F(ab')<sub>2</sub> fragment was prepared by pepsin digestion.

Purity: Affinity purified antibody is ≥ 90 % based on SDS-PAGE. Small amounts of intact IgG may be present.

Host: Goat

Immunogen: Purified Human IgG Fc

Buffer: 10 mM Sodium Phosphate, 0.15 M Sodium Chloride, pH 7.2,  
1 % (w/v) BSA, Protease/IgG free

Preservative: 0.05 % (w/v) Sodium Azide

Storage: Store undiluted liquid at 2-8 °C. Prepare working dilution prior to use and then discard.

Shelf Life: 1 year from date of receipt

Specificity: Based on IEP, this antibody reacts with:

- heavy (γ) chains on Human IgG

Cross Reactivity: Based on IEP, no reactivity is observed to:

- light chains on all Human immunoglobulins
- non-immunoglobulin Human serum proteins
- Human IgG F(ab')<sub>2</sub> fragment
- serum proteins from Bovine, Horse, Mouse, or Rabbit

Country of Origin: Goat antiserum was obtained from healthy animals of US origin and under the care of a registered veterinarian.

Note: This conjugate was prepared using Part # GtxHu-004-J, Lot # 36-157-060616

Applications: This conjugate is suitable for use in: FLISA, IF, IM, IHC, FACS. The optimal working dilution should be determined by the investigator. Suggested starting dilution(s):

- 1:20 – 1:2,000 for Immunohistochemistry
- 1:50 – 1:5,000 for Immunocytochemistry

Disclaimer: *For in vitro Laboratory Use Only.* Not for diagnostic or therapeutic use. Not for human or animal consumption. The proper selection and use of our products is the sole responsibility of the end user, and therefore we can offer no guarantee to a specific experimental outcome. Suggested applications of our products are not recommendations to use our products in violation of any patent or as a license under any patent of ImmunoReagents, Inc.

**Product may not be resold or modified for resale without prior written approval of ImmunoReagents, Inc.**

---

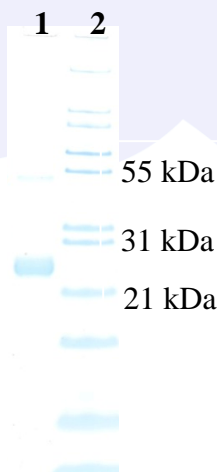
---

## Testing Results

**PRODUCT:** Goat anti-Human IgG Fc, F(ab')<sub>2</sub> Fragment, FITC Conjugate  
**PART NUMBER:** GtxHu-004-JFITC  
**LOT NUMBER:** 70-99-111919

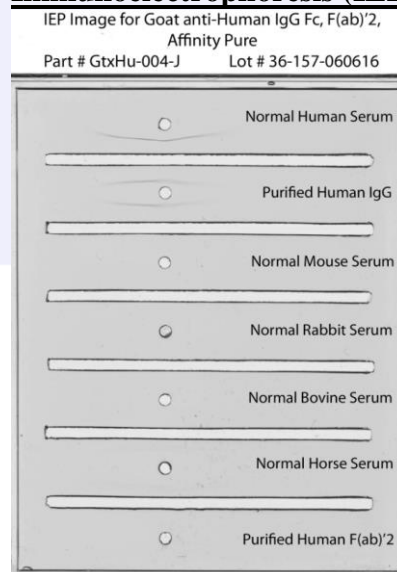
<u>TESTS</u>	<u>SPECIFICATIONS</u>	<u>RESULTS</u>
Appearance	Clear, fluorescent yellow liquid	PASS
Purity	One predominant band at 24 kDa based on SDS-PAGE	PASS
Specificity	Based on IEP, this antibody has a precipitin band against: <ul style="list-style-type: none"><li>heavy (γ) chains on Human IgG</li></ul>	PASS
Cross Reactivity	Based on IEP, no reactivity is observed to: <ul style="list-style-type: none"><li>light chains on all Human immunoglobulins</li><li>non-immunoglobulin Human serum proteins</li><li>Human IgG F(ab')<sub>2</sub> fragment</li><li>serum proteins from Bovine, Horse, Mouse, or Rabbit</li></ul>	PASS PASS PASS PASS
FLISA:	Mean fluorescent value of 8 μg/ml of FITC conjugate when tested against normal Human IgG coated at 4 μg/ml	3647 MFI's
F.I.T.:	Mean fluorescent intensity of a 1:1000 dilution at Ex-494 nm (+/-9)/Em-519 nm (+/-9)	9133 MFI's

### SDS-PAGE



- 1) GtxHu-004-J, Lot # 36-157-060616  
2) Mol Weight Standard

### Immunoelectrophoresis (IEP)



Date: November 22, 2019

Signature: \_\_\_\_\_

  
Quality Control