

## Certificate of Analysis

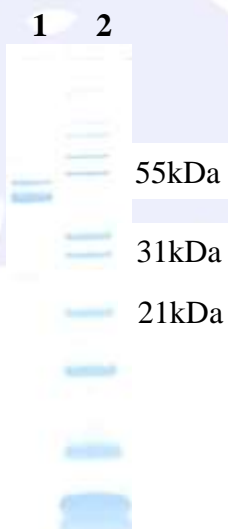
|                    |  |
|--------------------|--|
| Product:           | Llama anti-Rabbit IgG (H&L), Affinity Pure   |
| Part Number:       | LlxRb-003-D  |
| Lot Number:        | 81-39-121120   |
| Concentration:     | 10.0 mg/ml ( $E^{1\%}$ at 280 nm = 13.0)   |
| Amount:            | 2.0 mg   |
| Form:              | Clear, colorless liquid, 0.2 $\mu$ m filtered  |
| Purification:      | Affinity purified using solid phase Rabbit IgG   |
| Purity:            | $\geq 95$ % based on SDS-PAGE  |
| Immunogen:         | Purified Rabbit IgG, whole molecule  |
| Buffer:            | 10 mM Sodium Phosphate, 0.15 M Sodium Chloride, pH 7.2   |
| Preservative:      | 0.05 % (w/v) Sodium Azide  |
| Storage:           | 2 - 8 $^{\circ}$ C   |
| Expiration Date:   | 12-11-2023   |
| Specificity:       | Based on IEP, this antibody reacts with: <ul style="list-style-type: none"><li>• heavy (<math>\gamma</math>) chains on Rabbit IgG</li><li>• light chains on all Rabbit immunoglobulins</li></ul>   |
| Cross Reactivity:  | Based on IEP, no reactivity is observed to: <ul style="list-style-type: none"><li>• non-immunoglobulin Rabbit serum proteins</li></ul>   |
| Country of Origin: | Llama serum was obtained from healthy animals of US origin and under the care of a registered veterinarian.  |
| Applications:      | Suitable for use in: ELISA, WB, IHC, ICC, CL, FACS, IM, IF<br>The optimal working dilution should be determined by the investigator.   |
| Disclaimer:        | <i>For in vitro Laboratory Use Only.</i> Not for diagnostic or therapeutic use. Not for human or animal consumption. The proper selection and use of our products is the sole responsibility of the end user, and therefore we can offer no guarantee to a specific experimental outcome. Suggested applications of our products are not recommendations to use our products in violation of any patent or as a license under any patent of ImmunoReagents, Inc.<br><br><b>Product may not be resold or modified for resale without prior written approval of ImmunoReagents, Inc.</b> |

## Testing Results

**PRODUCT:** Llama anti-Rabbit IgG (H&L), Affinity Pure  
**PART NUMBER:** LlxRb-003-D  
**LOT NUMBER:** 81-39-121120

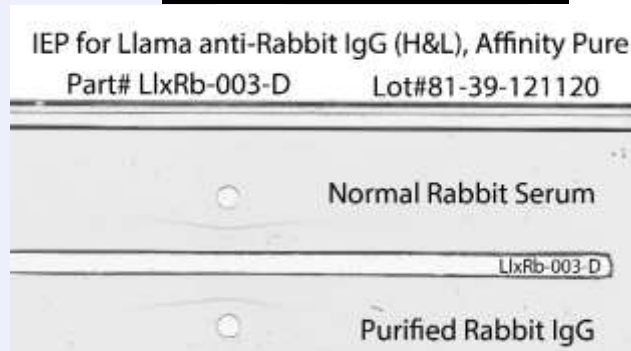
| <u>TESTS</u>      | <u>SPECIFICATIONS</u>  | <u>RESULTS</u> |
|-------------------|--|----------------|
| Appearance:       | Clear, colorless liquid  | PASS           |
| Purity:           | Three predominant bands based on SDS-PAGE: <ul style="list-style-type: none"><li>• double band at 50 kDa</li><li>• single band at 24 kDa</li></ul>   | PASS<br>PASS   |
| Specificity:      | Based on IEP, this antibody has precipitin bands with: <ul style="list-style-type: none"><li>• heavy (<math>\gamma</math>) chains on Rabbit IgG</li><li>• light chains on all Rabbit immunoglobulins</li></ul> | PASS<br>PASS   |
| Cross Reactivity: | Based on IEP, this antibody does not have precipitin bands to: <ul style="list-style-type: none"><li>• non-immunoglobulin Rabbit serum proteins</li></ul>  | PASS           |

### SDS-PAGE



- 1) LlxRb-003-D, Lot # 81-39-121120
- 2) Mol Weight Standard

### Immunoelectrophoresis (IEP)



Date: December 15, 2020

Signature: \_\_\_\_\_

*Lee Berchman, Ph.D*

Quality Control