

Certificate of Analysis

| | |
|--------------------|--|
| Product: | Goat anti-Rabbit IgG (H&L), F(ab)'2 Fragment, Affinity Pure |
| Part Number: | GtxRb-003-J |
| Lot Number: | 65-98-021319 |
| Concentration: | 11.3 mg/ml (E ^{1%} at 280 nm = 13.0) |
| Amount: | 1.0 mg |
| Form: | Clear, colorless liquid, 0.2 µm filtered |
| Purification: | Affinity purified using solid phase Rabbit IgG. F(ab)'2 fragment was prepared by pepsin digestion. |
| Purity: | ≥ 90 % based on SDS-PAGE. Small amounts of intact IgG may be present. |
| Host: | Goat |
| Immunogen: | Purified Rabbit IgG, whole molecule |
| Buffer: | 10 mM Sodium Phosphate, 0.15 M Sodium Chloride, pH 7.2 |
| Preservative: | 0.05 % (w/v) Sodium Azide |
| Storage: | 2 - 8 °C |
| Expiration Date: | February 13 th , 2022 |
| Specificity: | Based on IEP, this antibody reacts with: <ul style="list-style-type: none">• heavy (γ) chains on Rabbit IgG• light chains on all Rabbit immunoglobulins |
| Cross Reactivity: | Based on IEP, no reactivity is observed to: <ul style="list-style-type: none">• non-immunoglobulin Rabbit serum proteins• serum proteins from Bovine, Human, or Mouse• IgG from Human or Mouse |
| Country of Origin: | Goat serum was obtained from healthy animals of US origin and under the care of a registered veterinarian. |
| Applications: | Suitable for use in: ELISA, WB, IHC, ICC, CL, FACS, IM, IF. The optimal working dilution should be determined by the investigator. |
| Disclaimer: | <i>For in vitro Laboratory Use Only.</i> Not for diagnostic or therapeutic use. Not for human or animal consumption. The proper selection and use of our products is the sole responsibility of the end user, and therefore we can offer no guarantee to a specific experimental outcome. Suggested applications of our products are not recommendations to use our products in violation of any patent or as a license under any patent of ImmunoReagents, Inc. |

Product may not be resold or modified for resale without prior written approval of ImmunoReagents, Inc.

Testing Results

PRODUCT: Goat anti-Rabbit IgG (H&L), F(ab)'2 Fragment, Affinity Pure
PART NUMBER: GtxRb-003-J
LOT NUMBER: 65-98-021319

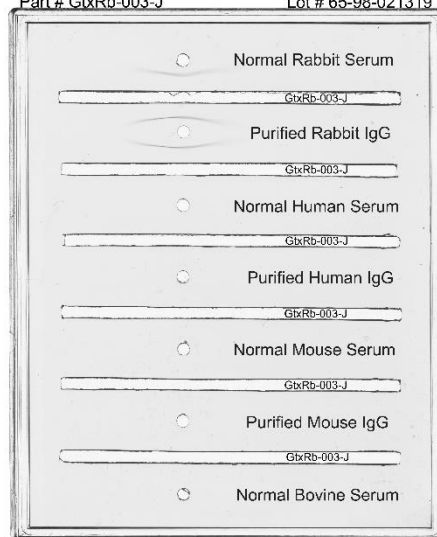
| <u>TESTS</u> | <u>SPECIFICATIONS</u> | <u>RESULTS</u> |
|-------------------|--|----------------|
| Appearance: | Clear, colorless liquid | PASS |
| Purity: | One predominant band at 24 kDa based on SDS PAGE | PASS |
| Specificity: | Based on IEP, this antibody has precipitin bands with: | |
| | <ul style="list-style-type: none"> • heavy (γ) chains on Rabbit IgG • light chains on all Rabbit immunoglobulins | PASS PASS |
| Cross Reactivity: | Based on IEP, no precipitin bands are observed to: | |
| | • non-immunoglobulin Rabbit serum proteins | PASS |
| | • serum proteins from Bovine, Human, or Mouse | PASS |
| | • IgG from Human or Mouse | PASS |

SDS-PAGE



Immunoelectrophoresis (IEP)

IEP for Goat anti-Rabbit IgG (H&L), F(ab)'2 Fragment
Part # GtxRb-003-J Lot # 65-98-021319



- 1) GtxRb-003-J, Lot # 65-98-021319
- 2) Mol Weight Standard

Date: February 21, 2019

Signature: _____



Quality Control