

---

---

## Certificate of Analysis

Product:	Rabbit anti-Sheep IgG (H&L), Affinity Pure
Part Number:	RbxSh-003-D
Lot Number:	69-70-082919
Concentration:	10.0 mg/ml ( $E^{1\%}$ at 280 nm = 13.0)
Amount:	2.0 mg
Form:	Clear, colorless liquid, 0.2 $\mu$ m filtered
Purification:	Affinity purified using solid phase Sheep IgG
Purity:	$\geq 95$ % based on SDS-PAGE
Host:	Rabbit
Immunogen:	Purified Sheep IgG, whole molecule
Buffer:	10 mM Sodium Phosphate, 0.15 M Sodium Chloride, pH 7.2
Preservative:	0.05 % (w/v) Sodium Azide
Storage:	2 - 8 $^{\circ}$ C
Expiration Date:	08-29-2022
Specificity:	Based on IEP, this antibody reacts with: <ul style="list-style-type: none"><li>• heavy (<math>\gamma</math>) chains on Sheep IgG</li><li>• light chains on all Sheep immunoglobulins</li></ul>
Cross Reactivity:	Based on IEP, no reactivity is observed to: <ul style="list-style-type: none"><li>• non-immunoglobulin Sheep serum proteins</li></ul>
Country of Origin:	Rabbit serum was obtained from healthy animals of US origin and under the care of a registered veterinarian.
Applications:	This antibody is suitable for use in most immunoassay formats for the detection of Sheep IgG or as a capture antibody in ELISA type formats. This antibody is suitable for use in Western ImmunoBlots and ImmunoHistoChemistry (IHC). This antibody will cross react with IgG from other species. The optimal working dilution should be determined by the investigator.
Disclaimer:	<i>For in vitro Laboratory Use Only.</i> Not for diagnostic or therapeutic use. Not for human or animal consumption. The proper selection and use of our products is the sole responsibility of the end user, and therefore we can offer no guarantee to a specific experimental outcome. Suggested applications of our products are not recommendations to use our products in violation of any patent or as a license under any patent of ImmunoReagents, Inc.

**Product may not be resold or modified for resale without prior written approval of ImmunoReagents, Inc.**

---

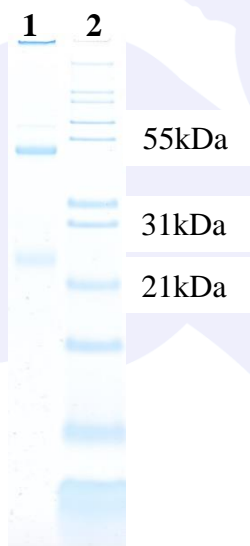
---

## Testing Results

**PRODUCT:** Rabbit anti-Sheep IgG (H&L), Affinity Pure  
**PART NUMBER:** RbxSh-003-D  
**LOT NUMBER:** 69-70-082919

<u>TESTS</u>	<u>SPECIFICATIONS</u>	<u>RESULTS</u>
Appearance:	Clear, colorless liquid	PASS
Purity:	Two predominant bands at 50 and 24 kDa based on SDS-PAGE	PASS
Specificity:	Based on IEP, this antibody has precipitin bands with: <ul style="list-style-type: none"><li>heavy (<math>\gamma</math>) chains on Sheep IgG</li><li>light chains on all Sheep immunoglobulins</li></ul>	PASS PASS
Cross Reactivity:	Based on IEP, this antibody does not have precipitin bands to: <ul style="list-style-type: none"><li>non-immunoglobulin Sheep serum proteins</li></ul>	PASS

### SDS-PAGE

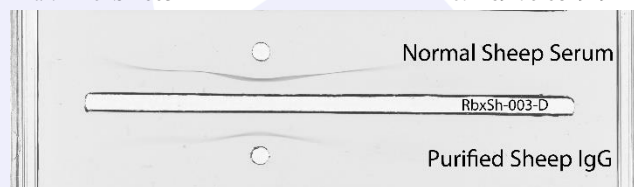


### Immunoelectrophoresis (IEP)

IEP for Rabbit anti-Sheep IgG (H&amp;L), Affinity Pure

Part # RbxSh-003-D

Lot # 69-70-082919



- 1) RbxSh-003-D, Lot # 69-70-082919
- 2) Mol Weight Standard

Date: September 5, 2019

Signature: \_\_\_\_\_

  
Quality Control