

Certificate of Analysis

| | |
|--------------------|--|
| Product: | Sheep anti-Rabbit IgG (H&L), Affinity Pure |
| Part Number: | ShxRb-003-D |
| Lot Number: | 66-6-061318 |
| Concentration: | 10.3 mg/ml (E ^{1%} at 280 nm = 13.0) |
| Amount: | 2.0 mg |
| Form: | Clear, colorless liquid, 0.2 µm filtered |
| Purification: | Affinity purified using solid phase Rabbit IgG |
| Purity: | Affinity purified antibody is ≥ 95 % based on SDS-PAGE |
| Host: | Sheep |
| Immunogen: | Purified Rabbit IgG, whole molecule |
| Buffer: | 10 mM Sodium Phosphate, 0.15 M Sodium Chloride, pH 7.2 |
| Preservative: | 0.05 % (w/v) Sodium Azide |
| Storage: | 2-8 °C |
| Expiration Date: | June 13, 2021 |
| Specificity: | Based on IEP, this antibody reacts with: <ul style="list-style-type: none">• heavy (γ) chains on Rabbit IgG• light chains on all Rabbit immunoglobulins |
| Cross Reactivity: | Based on IEP, no reactivity is observed to: <ul style="list-style-type: none">• non-immunoglobulin Rabbit serum proteins |
| Country of Origin: | Sheep serum was obtained from healthy animals of US origin and under the care of a registered veterinarian. |
| Applications: | The optimal working dilution should be determined by the investigator. Suitable for use in: ELISA, WB, IHC, ICC, CL, FACS, IM, and Absorption. |
| Disclaimer: | <i>For in vitro Laboratory Use Only.</i> Not for diagnostic or therapeutic use. Not for human or animal consumption. The proper selection and use of our products is the sole responsibility of the end user, and therefore we can offer no guarantee to a specific experimental outcome. Suggested applications of our products are not recommendations to use our products in violation of any patent or as a license under any patent of ImmunoReagents, Inc. |

Product may not be resold or modified for resale without prior written approval of ImmunoReagents, Inc.

Testing Results

PRODUCT: Sheep anti-Rabbit IgG (H&L), Affinity Pure
PART NUMBER: ShxRb-003-D
LOT NUMBER: 66-6-061318

| <u>TESTS</u> | <u>SPECIFICATIONS</u> | <u>RESULTS</u> |
|-------------------|--|----------------|
| Appearance: | Clear, colorless liquid | PASS |
| Purity: | Two predominant bands at 50 and 24 kDa based on SDS-PAGE | PASS |
| Specificity: | Based on IEP, this antibody has precipitin bands with: <ul style="list-style-type: none">heavy (γ) chains on Rabbit IgGlight chains on all Rabbit immunoglobulins | PASS PASS |
| Cross Reactivity: | Based on IEP, no precipitin bands are observed to: <ul style="list-style-type: none">non-immunoglobulin Rabbit serum proteins | PASS |

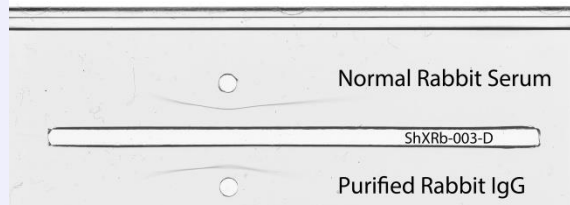
SDS-PAGE



- 1) ShxRb-003-D, Lot # 66-6-061318
- 2) Mol Weight Standard

Immuno-electrophoresis (IEP)

IEP For Sheep anti-Rabbit IgG (H+L), Affinity Pure
Part # ShxRb-003-D Lot # 66-6-061318



Date: June 25, 2018

Signature: _____


Quality Control